

**MINNESOTA HISTORY / ARCHITECTURE INVENTORY FORM**  
**NORTHFIELD COMMERCIAL HISTORIC DISTRICT**  
**Rice County, Minnesota**

PROPERTY LOCATION	
<b>Property Name:</b> Northfield News Building	<b>Inventory No.:</b> RC-NFC- 316
<b>Address:</b> 311-313 Division Street, Northfield, MN	<b>PIN:</b> 2231350043
<b>QTR/QTR/T/R/S:</b> SW SW Section 31 T112N R19	
<b>USGS Quad:</b> Northfield, Minnesota	<b>Plat Name:</b> Original Town <b>Block:</b> 23 <b>Lot:</b> 3
<b>UTM Z 15 487314E, 4922638N</b> <b>NAD 83</b>	

PROPERTY INFORMATION	
<b>Construction Date:</b> 1884	<b>Style:</b> Queen Anne
<b>Historic Use:</b> commercial	<b>Current Use:</b> commercial
<b>Property Type:</b> commercial	<b>Historic Context:</b> "Commerce, 1856-1945"
<b>Architect/Builder</b>	<b>Survey Name:</b> Northfield Historic District Survey Revision Project, 2016
<b>Previous NRHP Status:</b> Contributing to Northfield Commercial Historic District	<b>NRHP Recommendation:</b> Contributing to Northfield Commercial Historic District
<b>Form Prepared by:</b> C. Zellie Landscape Research LLC	<b>Survey Date:</b> 3/2016



**2016, looking west**



**ca. 1978**

**Description**

A pair of party-wall, two-story brick buildings are united by a stamped metal cornice decorated with a greek-key motif, a rusticated stone beltcourse, and shallow piers that divide the narrow bays. Each upper-story bay is filled with a window; or in one case, a pair of windows. The windows contain modern one-over-one sash. The lower level façade was remodeled in 1965 following a fire. There are three entries and several wall and window treatments. No historic materials appear to have survived. The signband area has blank masonry panels. There is a one-story, stucco-clad addition at the rear.

**History**

Built by John Carl (1855-1890), a native of Sweden to house an implement store and newspaper printing plant. Other early tenants included Weeks and Lyman and the C. H. Watson harness shop. A cigar store and billiard room (1926), the Woodward Clothing Store (1927). The Northfield News moved out after eighty years of occupancy following a fire in 1964. The Margaret Stark gift store (1965-1975) and Homstad Goldsmith (1975-unknown) followed.

MINNESOTA HISTORY / ARCHITECTURE INVENTORY FORM  
NORTHFIELD COMMERCIAL HISTORIC DISTRICT  
Rice County, Minnesota

**Significance and Historic Context(s)**

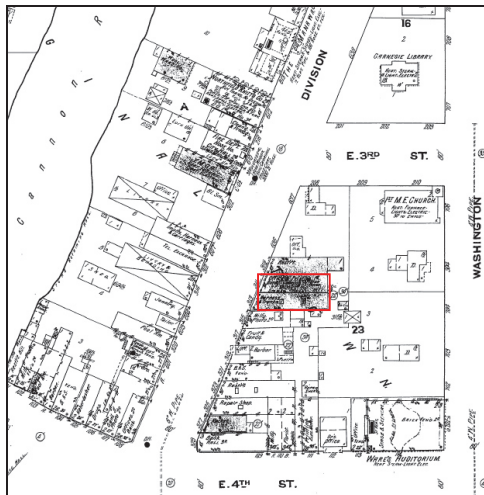
This building is associated with the second period of Northfield's commercial development, from ca. 1880 to 1900, when 29 of the 65 historic district buildings were constructed. It is associated with the Northfield historic context, "Commerce, 1856-1945" (Northfield Preservation Plan, 1992).

**Evaluation**

This property was listed on the NRHP in 1979 as contributing to the Northfield Commercial Historic District. This building is historically significant under Criterion A for its role in the city's commercial development in the late 19th century. Ground-level storefront alterations are extensive and historic integrity is fair. Based on the retention of the upper-story features and their good level of integrity, however, the building is contributing to the late 19th- and early 20th-century character of the streetscape and district.

**References**

- Edwins, Steve, ed. *Northfield Downtown Guidebook*. Northfield Heritage Preservation Commission, 1982.
- "Northfield Historic District," National Register of Historic Places Nomination, 1979.
- Northfield Historical Society. Photograph and research files. Northfield, Minnesota.
- Sanborn Map & Publishing Company, New York. Northfield plates, 1886-1943.
- Zellie, Carole. "Northfield Heritage Preservation Plan." Prepared for the Northfield Heritage Preservation Commission, Northfield, Minn. by Landscape Research, 1992.



Sanborn Map and Publishing Co., 1910



USGS: Northfield 1984.



ca. 1890s; 315-317 Division at right.