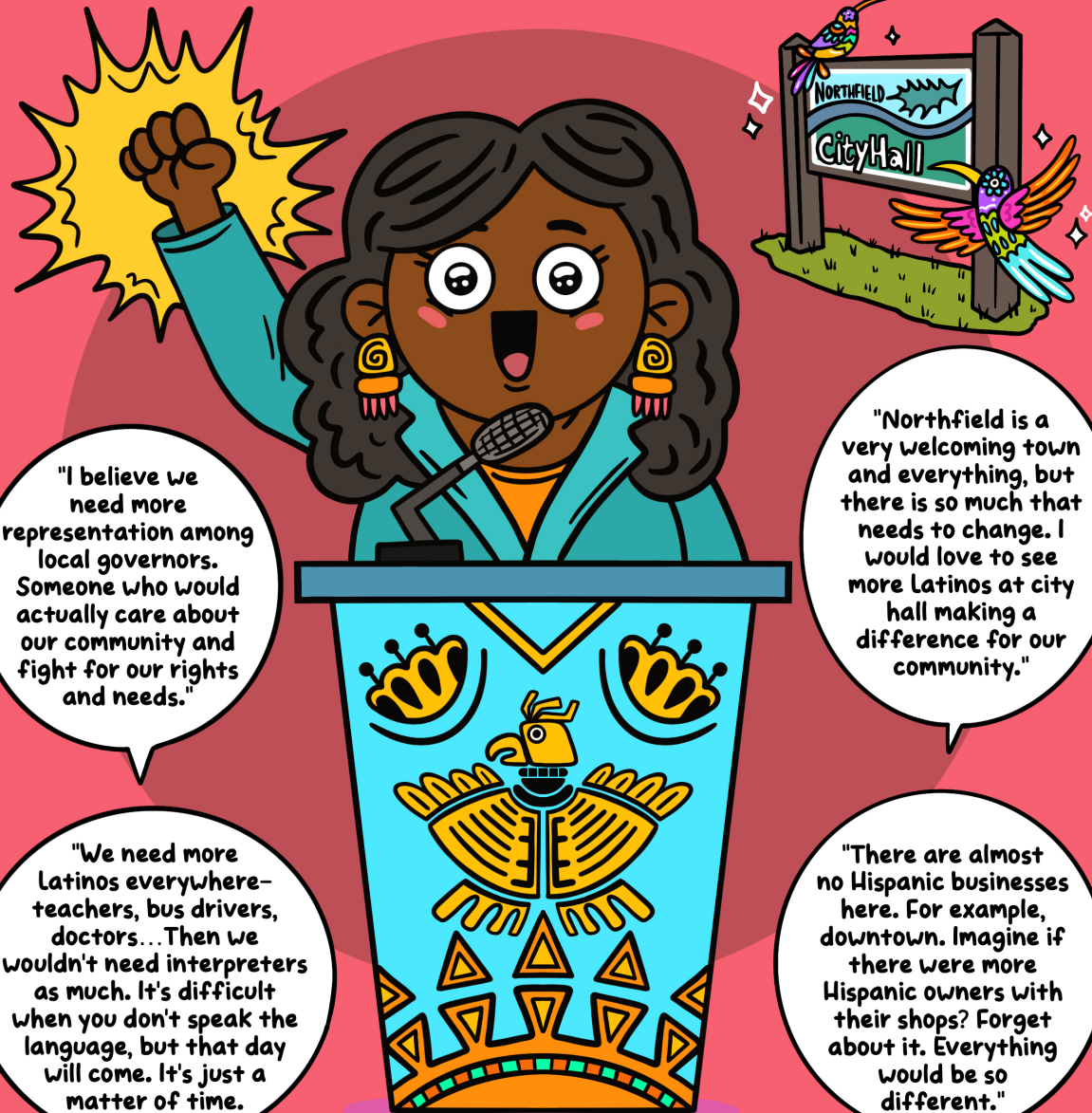


INTRODUCTION

A comprehensive plan (Plan) is built on an aspirational vision that represents the community's shared values. It must strike a balance between competing interests and provides clear guidance for decisions that will move the city towards its vision. The comprehensive plan acts as a guide to decision making when the city is faced with new challenges, opportunities and questions that were not originally anticipated. While by nature an overarching document, it is not everything to everyone. To make sure the city is resilient, we must attempt to tackle things we know and be prepared to adjust to the things we don't.

The Plan is centered around the things that matter most to you in your community: **equity, access, and sustainability**. The plan represents all of us, connected, in the community we share: each person, family, community, block, street, business, organization, and company.

Dear Northfield, we dream of a town where **WE ARE REPRESENTED**



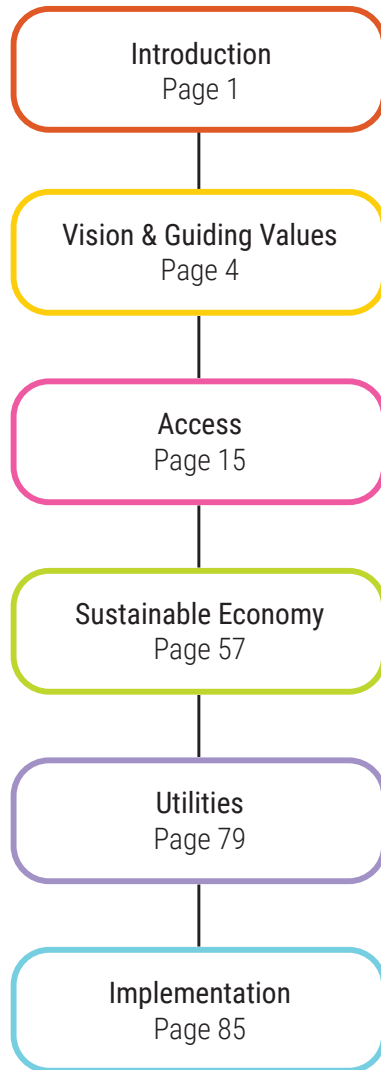
"I believe we need more representation among local governors. Someone who would actually care about our community and fight for our rights and needs."

"Northfield is a very welcoming town and everything, but there is so much that needs to change. I would love to see more Latinos at city hall making a difference for our community."

"We need more Latinos everywhere—teachers, bus drivers, doctors... Then we wouldn't need interpreters as much. It's difficult when you don't speak the language, but that day will come. It's just a matter of time."

"There are almost no Hispanic businesses here. For example, downtown. Imagine if there were more Hispanic owners with their shops? Forget about it. Everything would be so different."

Table of Contents



How to Use the Plan

Start with the vision and guiding values. Developed based on community input, these are shared by the community and will guide all of the policies and actions described in the Plan.

Next, the decision-making framework shows how everyone can use the plan in making daily decisions that will move the City towards that shared vision, and living our guiding values.

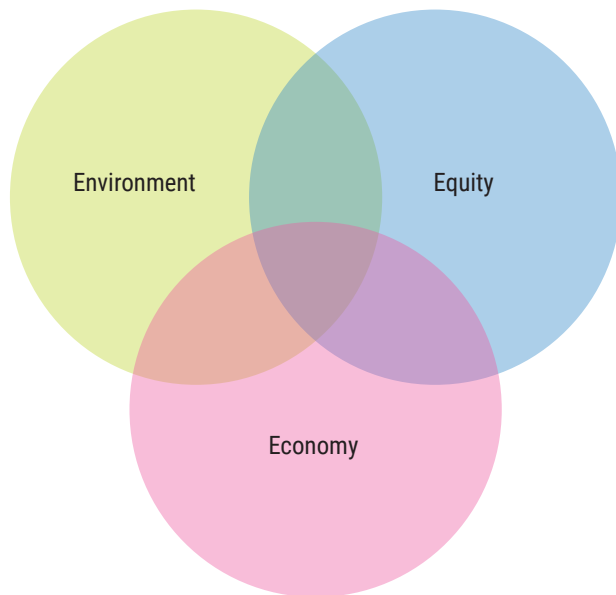
Each chapter of the Plan connects to the vision and guiding values. Each chapter:

- Centers on what we heard from the community.
- Meaningfully connects with the overall lenses of equity, climate, and economic sustainability.
- Develops strategies and actions that move the city forward.
- Includes detailed analysis that supports the strategies.

Lenses

All parts of the Plan are interwoven with others. For example, providing more housing options is closely tied to land use policies. Developing in a compact manner is linked to meeting climate goals. And expanding employment opportunities necessitates providing more workforce housing. The list goes on.

While the Plan is necessarily divided into chapters, the analysis and strategies for each subject are developed through the following lenses:



Equity

All aspects of the Plan are linked to social and racial equity in the city. A comprehensive plan provides an opportunity to use its necessary breadth to speak to the needs of current and future marginalized communities. It also offers an opportunity to implement policies that raise the baseline quality of life for everyone. This Plan prioritizes the following policy topics to advance equity:

- Multimodal options
- Park access
- Small business support
- Access to community facilities (schools, churches, cultural establishments, recreational facilities, etc.)
- Land use diversity (increasing the tax base mix)
- Housing choice
- Social and environmental resilience
- Public art access and representation
- Creating compact neighborhoods, where key services and amenities, including healthy food, can be accessed without a car. [\[Link to Equity Policy Framework\]](#).

Climate Change and Environmental Sustainability

Northfield has set bold goals to mitigate and become more resilient to a changing climate. That includes using 100% carbon-free electricity by 2030 and being 100% carbon-free by 2040. To accomplish this, the comprehensive plan includes strategies relating to land use, transportation, housing, and infrastructure.

Economic Sustainability

As a steward of taxpayer dollars, Northfield prioritizes growth in locations and patterns that pay for themselves. That means strategies related to land use patterns, growth areas, transportation, and infrastructure expansion prioritize balancing revenue generated and the costs of servicing new development.