

UNITED STATES DEPARTMENT OF THE INTERIOR
NATIONAL PARK SERVICE

**NATIONAL REGISTER OF HISTORIC PLACES
INVENTORY -- NOMINATION FORM**

FOR NPS USE ONLY

RECEIVED

NOV 20 1978

DATE ENTERED

Northfield Historic District

CONTINUATION SHEET

ITEM NUMBER 7

PAGE 7

THE LOCKREM/SUMNER BUILDING - (Willie's Shoe Repair): 315 Division Street

This two-story brick building was constructed in 1873. It has arched second-story windows. The building's heavy bracketed cornice was removed in the mid 1960s. The remaining elements of the facade are historically intact.

THE CARNEGIE PUBLIC LIBRARY: 105 East Third Street

Designed in 1910 by Bell, Tyrie, and Chapman of Minneapolis, the Carnegie Public Library is an example of the Georgian Revival style. Constructed of brown brick with white classical details, it has a pedimented entry, modillioned cornice, and square columns. This two-story building is characterized by a formal arrangement of parts employing a symmetrical composition, form and detail. Prominently sited on a small hill overlooking Third and Division Streets, this building has grounds which are finely landscaped. This site is also important as the location of the first building to house Carleton College.

COMPLEMENTARY BUILDINGS: Defined as those buildings whose massing or siting or general historic character contribute to pivotal buildings and streetscapes continuity of the Historic District.

THE SITZE BUILDING - (Harmon Photography): 300 Division Street

Built in 1886 this two-story brick building has a 22-foot frontage, flat roof, decorative corbels, and three second-story arched windows. The shop front has been considerably altered with glass blocks, "thin" brick, and aluminum framed display windows. The Sitze Building is a member of a group of buildings with similar details and surface color.

THE ALEX MARSHALL BUILDING - (Dahl House): 306 Division Street

Built in 1933, this two-story, light brown brick building has a variegated roof line and paired second-story windows. The shop front (remodeled in 1975 in darker brick) has two broad entrance arches with flanking arched doorways.

THE BUSHNELL, TOSNEY AND McKAY BUILDINGS - (Perman's): 308-314 Division Street

These three brick buildings, (built in 1882, 1897 and 1925), are currently combined to form the Perman Clothing Store. These buildings, each with differing scale, surface detail and fenestration are joined on the second stories by a coat of ochre paint and on the street by a continuous shop front of bay-type windows.

Northfield Commercial Historic District

Name of Property

Rice, Minnesota

County and State

double-hung sash. The storefront below has a modern system that generally replicates traditional design.

28. Tosney Building, 312 Division Street, 1882 (RC-NFC-367) 1 contributing building

This flat-roofed, two-story building is clad in painted brick. It faces east on Division Street, and the rear fronts the Cannon River and Cannon River Commons. It has a simple cornice, probably remodeled. Below the cornice line, the three-bay facade has recessed panels with corbel courses that flank the prominent central bay. Each window has a decorated stone lintel with a central rosette and leaf motif. Replacement sash are double-hung units. The storefront below has a modern system that generally replicates the traditional design.

**29. Northfield News Building, 311-313 Division Street, 1884 (RC-NFC-316)
1 contributing building**

A pair of party-wall, two-story brick buildings are united by a stamped metal cornice decorated with a running Greek-key motif, a rusticated stone beltcourse, and shallow piers that divide the narrow bays. Each upper-story bay is filled with a window; or in one case, a pair of windows. The windows contain modern one-over-one sash. The lower level façade was remodeled in 1965 following a fire. There are three entries and several wall and window treatments. No historic materials appear to have survived. The signband area has blank masonry panels. There is a one-story, stucco-clad addition at the rear.

30. McKay Building, 314 Division Street, 1925 (RC-NFC-368) 1 contributing building

This flat-roofed, two-story building is clad in painted brick. It faces east on Division Street, and the rear fronts the Cannon River and Cannon River Commons. It has a simple cornice with three low-relief stone medallions. The simple façade has six second-story windows filled with multi-paned, double-hung sash, and wide brick piers that divided the building into two ground-level units. The storefront has a modern storefront system that generally replicates the traditional design. The storefront display window openings are filled with multi-paned sash. There is a two-story, brick-clad addition at the rear.

31. Sumner Building, 315 Division Street, 1873 (RC-NFC-295) 1 contributing building

The two-story, flat-roofed, Italianate style, red-brick Sumner Building (Lockrem Building), faces west. Like the French Building to the south at 317 Division, three arched windows light the second story. The windows have prominent brick voussoirs. The one-over-one double-hung sash is a modern replacement. The storefront has a recessed side entrance, a wood cornice with paired brackets, and a large display window. The wood or metal apron below the simple brick cornice appears to be a contemporary addition, but is similar to the appearance of a feature shown in a ca. 1890s photograph, placed between now-missing brackets.

MINNESOTA HISTORY / ARCHITECTURE INVENTORY FORM
NORTHFIELD COMMERCIAL HISTORIC DISTRICT
Rice County, Minnesota

PROPERTY LOCATION	
Property Name: Tosney Building	Inventory No.: RC-NFC-367
Address: 312 Division Street, Northfield, MN	PIN: 2231350032
QTR/QTR/T/R/S: SW SW Section 31 T112N R19W	
USGS Quad: Northfield, Minnesota	Plat Name: Original Town Block: River Lots Lot 5
UTM Z 15 487254E, 4922651N NAD 83	

PROPERTY INFORMATION	
Construction Date: 1882	Style: Commercial Style
Historic Use: commercial	Current Use: commercial
Property Type: commercial	Historic Context: "Commerce, 1856-1945"
Architect/Builder	Survey Name: Northfield Historic District Survey Revision Project, 2016
Previous NRHP Status: Contributing to Northfield Commercial Historic District	NRHP Recommendation: Contributing to Northfield Commercial Historic District
Form Prepared by: C. Zellie Landscape Research LLC	Survey Date: 3/2016



2016 (left), looking west



1978

Description

This flat-roofed, two-story building is clad in painted brick. It faces east on Division Street, and the rear fronts the Cannon River and Cannon River Commons. It has a simple cornice, probably remodeled. Below the cornice line, the three-bay facade has recessed panels with corbel courses that flank the prominent central bay. Each window has a decorated stone lintel with a central rosette and leaf motif. Replacement sash are double-hung units. The storefront below has a modern system that generally replicates traditional design.

History

Built by John Tosney who originally occupied an upstairs apartment, the building has housed a liquor and cigar store, basement bowling alley, Northfield Telephone Company (1901-) and the Dittman Travel Agency. John Tosney was a travel agent at 321 Division Street in 1899.

MINNESOTA HISTORY / ARCHITECTURE INVENTORY FORM
NORTHFIELD COMMERCIAL HISTORIC DISTRICT
Rice County, Minnesota

Significance and Historic Context(s)

This building is associated with the second period of Northfield's commercial development, from ca. 1880 to 1900, when 29 of the 65 historic district buildings were constructed. It is associated with the Northfield historic context, "Commerce, 1856-1945" (Northfield Preservation Plan, 1992).

Evaluation

This property was listed on the NRHP in 1979 as contributing to the Northfield Commercial Historic District. It retains good historic significance and integrity.

References

Edwins, Steve, ed. *Northfield Downtown Guidebook*. Northfield Heritage Preservation Commission, 1982.

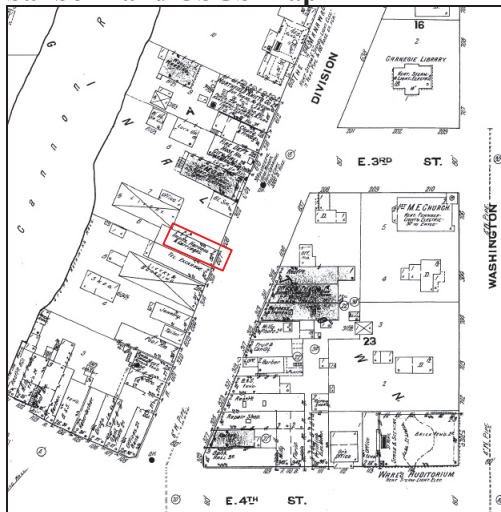
"Northfield Historic District," National Register of Historic Places Nomination, 1979.

Northfield Historical Society. Photograph and research files. Northfield, Minnesota.

Sanborn Map & Publishing Company, New York. Northfield plates, 1886-1943.

Zellie, Carole. "Northfield Heritage Preservation Plan." Prepared for the Northfield Heritage Preservation Commission, Northfield, Minn. by Landscape Research, 1992.

Sanborn and USGS Map



Sanborn Map and Publishing Co., 1910.



USGS: Northfield 1984.

MINNESOTA HISTORY / ARCHITECTURE INVENTORY FORM
NORTHFIELD COMMERCIAL HISTORIC DISTRICT
Rice County, Minnesota

PROPERTY LOCATION	
Property Name: McKay Building	Inventory No.: RC-NFC-368
Address: 314 Division Street, Northfield, MN	PIN: 2231350033
QTR/QTR/T/R/S: SW SW Section 31 T112N R19W	
USGS Quad: Northfield, Minnesota	Plat Name: Original Town Block: River Lot Lot 5
UTM Z 15 487249E, 4922643N NAD 83	

PROPERTY INFORMATION	
Construction Date: 1925	Style: Commercial Style
Historic Use: commercial	Current Use: commercial
Property Type: commercial	Historic Context: "Commerce, 1856-1945"
Architect/Builder Jos. Kump, contractor	Survey Name: Northfield Historic District Survey Revision Project, 2016
Previous NRHP Status: Contributing to Northfield Commercial Historic District	NRHP Recommendation: Contributing to Northfield Commercial Historic District
Form Prepared by: b	Survey Date: b



2016, looking west



ca. 1978

Description

This flat-roofed, two-story building is clad in painted brick. It faces east on Division Street, and the rear fronts the Cannon River and Cannon River Commons. It has a simple cornice with three low-relief stone medallions. The simple façade has six second-story windows filled with multi-paned, double-hung sash, and wide brick piers that divided the building into two ground-level units. The storefront has a modern storefront system that generally replicates the traditional design. The storefront display window openings are filled with multi-paned sash. There is a two-story, brick-clad addition at the rear.

History

Built by Alex McKay, Sr., this building replaced a large livery stable, one of two on the block (the other was behind the Bucknell Building at 310 Division St.). The north half housed the Post Office (1925-1935), which moved from the Scriver Block, and the south half housed the Alex Marshall Store (1925-29), then the Toggery 1929-1935. Perman's, a clothing retailer, occupied the building after 1936 and it was combined with the Tosney and Bushnell Buildings into Perman's.

MINNESOTA HISTORY / ARCHITECTURE INVENTORY FORM
NORTHFIELD COMMERCIAL HISTORIC DISTRICT
Rice County, Minnesota

Significance and Historic Context(s)

This building is associated with the third period of Northfield's commercial development, from ca. 1900 to 1945, when 14 of the 65 historic district buildings were constructed. Only two date from the 1920s. It is associated with the Northfield historic context, "Commerce, 1856-1945" (Northfield Preservation Plan, 1992).

Evaluation

This property was listed on the NRHP in 1979 as contributing to the Northfield Commercial Historic District. This building is historically significant for its role in the city's commercial development in the early 20th century. The rehabilitated ground-level storefronts are compatible with the historic character of the building and streetscape, and upper story features have been retained. The property retains historic significance and integrity and is contributing to the district.

References

Edwins, Steve, ed. *Northfield Downtown Guidebook*. Northfield Heritage Preservation Commission, 1982.

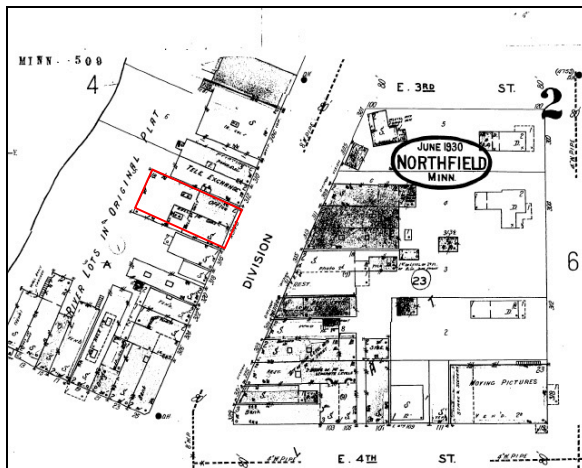
"Northfield Historic District," National Register of Historic Places Nomination, 1979.

Northfield Historical Society. Photograph and research files. Northfield, Minnesota.

Sanborn Map & Publishing Company, New York. Northfield plates, 1886-1943.

Zellie, Carole. "Northfield Heritage Preservation Plan." Prepared for the Northfield Heritage Preservation Commission, Northfield, Minn. by Landscape Research, 1992.

Sanborn and USGS Maps



Sanborn Map and Publishing Co., 1930, updated to 1943.



USGS: Northfield 1984.