

NORTHFIELD CENTRAL PARK PLAYGROUND

Proposed Repair + Replacement + Enhancements

aerial photograph – project area

AUGUST 2025



NORTHFIELD CENTRAL PARK PLAYGROUND

Proposed Repair + Replacement + Enhancements

planning and design process + neighborhood input

AUGUST 2025

CENTRAL PARK PLAYGROUND ENHANCEMENTS

Action

- Evaluate existing playground equipment – site meeting with equipment rep

Recommendations

- Keep most playground pieces in place [swings, main play structure, climber]
- In some cases, relocate pieces elsewhere within the play container
- Repair, replace parts, repaint existing equipment as needed

Action

- Met with nearby neighbors [two different groups; two different days]
- Met with nearby Daycare Center Director

Results

- Received valuable, focused comments that will certainly influence proposed enhancements
 - + more focus on 2 – 5 age group
 - + add challenges for 6 – 12 age group [suggested monkey bars]
 - + add more picnic tables with benches
 - + expressed a concern about Carleton students sometimes taking over the space
 - + expressed concern that the stone walls are falling apart [also need a cap]

Action

- Reached out to city contractor responsible for wall repair

Results

- Met with him on-site to review issue and discuss options
- Requested a cost estimate and proposal to complete the work
- Will schedule repairs [as budget allows]

Recommendations for 2 – 5 Age Group Enhancements

- Create more distinct 2 – 5 age group play area within existing container
- Move existing small slide to other side of platform [remove mushroom steppers]
- Move 'wobble tunnel' to other side of play container
- Add small playhouse themed feature

Recommendations for 6 – 12 Age Group Enhancements

- Add monkey bars where the small slide used to be
- Add multi-height climbing play piece

Recommendations for Overall Site Enhancements

- Replace wood edger with concrete ribbon curb
- Relocate existing benches and trash receptacles as needed
- Add picnic table pads and picnic tables
- Replace/add new poured rubber surfacing to provide ADA accessibility where needed

Next Steps

- Prepare preliminary concept plan and storyboard images of proposed enhancements
- Schedule meeting with City Staff to review preliminary concept plan and storyboard
- Schedule meeting with nearby neighbors and Daycare Center Director [public welcome]
- Schedule meeting with HPC for project update and concept plan review

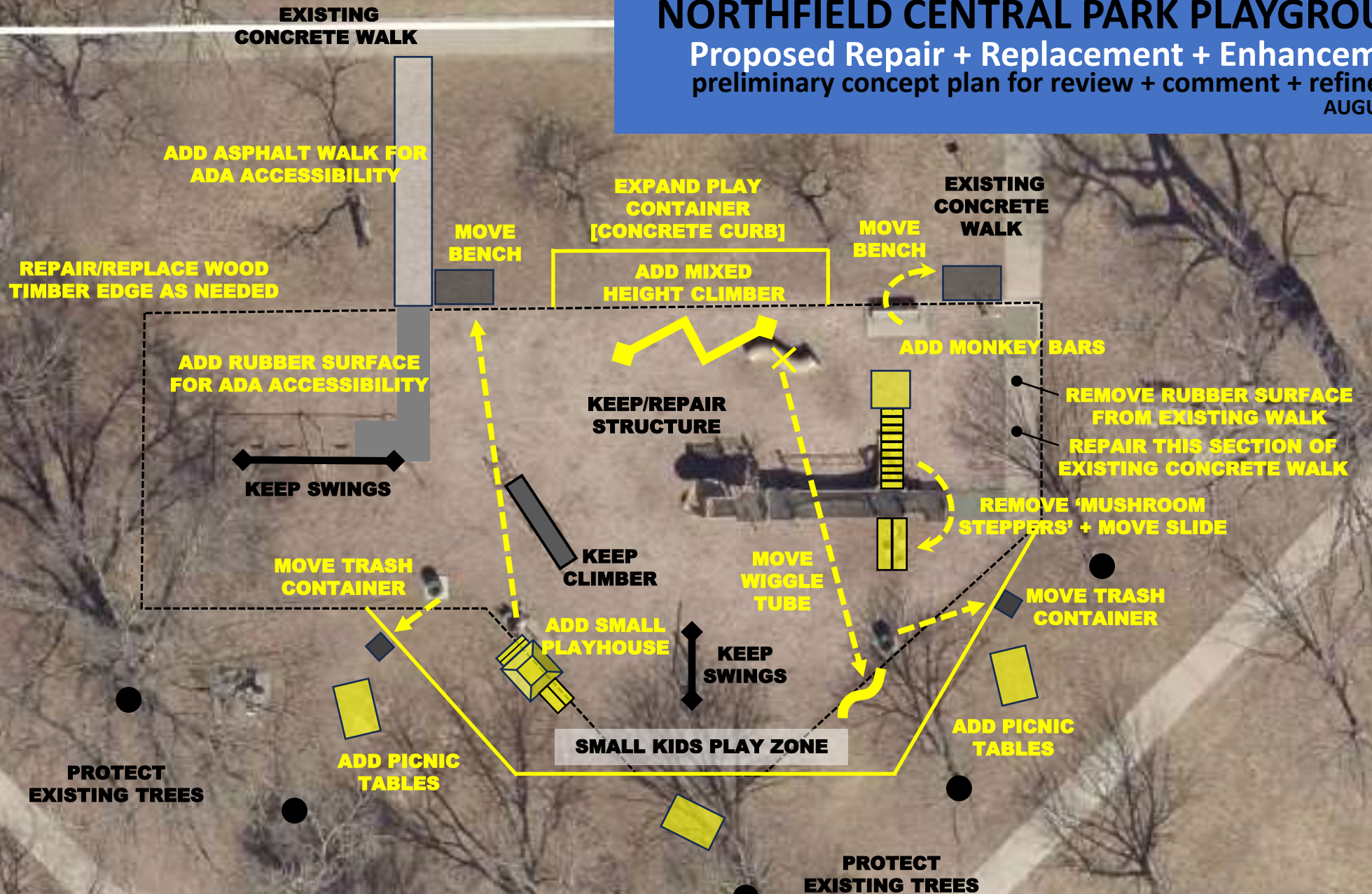
ANTICIPATED SPRING 2026 CONSTRUCTION START

NORTHFIELD CENTRAL PARK PLAYGROUND

Proposed Repair + Replacement + Enhancements

preliminary concept plan for review + comment + refinement

AUGUST 2025

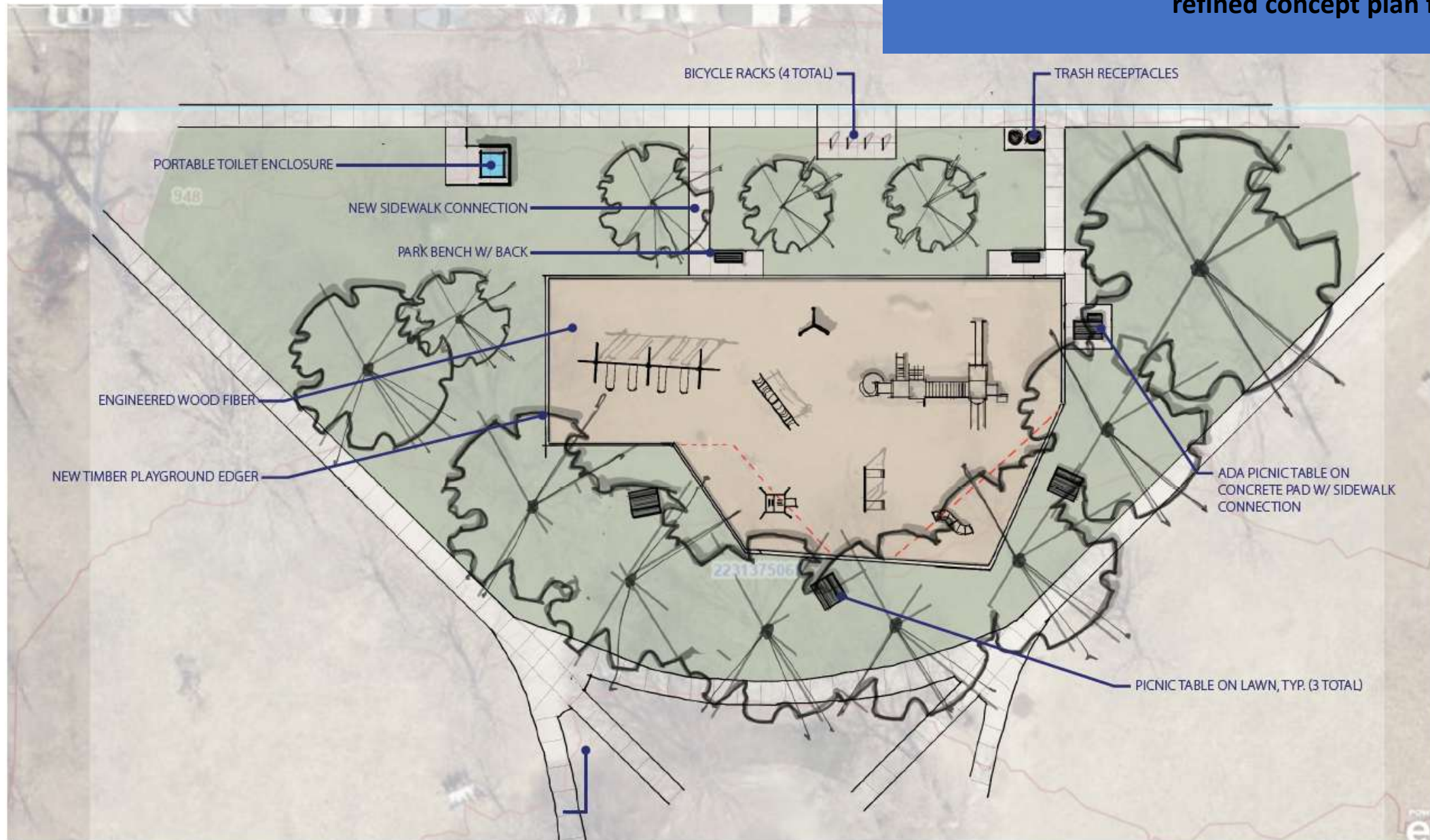


NORTHFIELD CENTRAL PARK PLAYGROUND

Proposed Repair + Replacement + Enhancements

refined concept plan for review + comment

AUGUST 2025



NORTHFIELD CENTRAL PARK PLAYGROUND

Proposed Repair + Replacement + Enhancements

photo examples of proposed playground features

AUGUST 2025



MOVEABLE PICNIC TABLE



BENCHES FACING EACH OTHER

PLEASE NOTE: WE'RE NOT RECOMMENDING SPECIFIC SITE FURNITURE, JUST PRESENTING THE IDEA OF ADDING FACING BENCHES AND PICNIC TABLES AT THIS LOCATION IN THE PARK



AND/OR REUSE [RELOCATE] EXISTING BENCHES



PLAYHOUSE



CLIMBER



MONKEY BARS