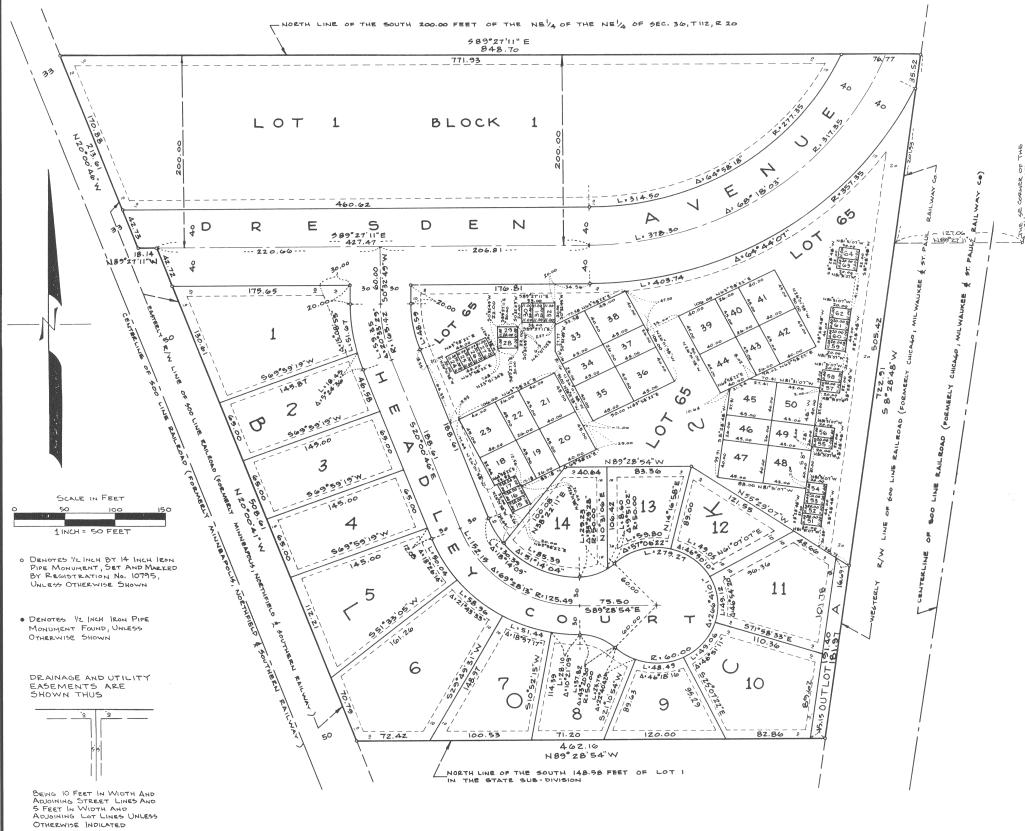


LINCOLN WOODS ADDITION



KNOW ALL MEN BY THESE PRESENTS: That Northfield Housing and Redevelopment Authority, a municipal corporation, owner and proprietor of the following described property situated in the County of Rice and State of Minnesota, to-wit:

That part of Lots 1 and 2 in the State Subdivision of the NE 1/4 and the South 200.00 feet of the NE 1/4 of the NW 1/4, all in Section 36, Township 112, Range 20, City of Northfield, Rice County, Minnesota, 121.00 feet of the right-of-way line of the 800 Line Railroad (formerly the Minneapolis and Northfield Railroad) and lying westerly of the westerly right-of-way line of the 800 line Railroad (formerly the Chicago, Milwaukee and St. Paul Railroad).

Has caused the same to be surveyed and platted as LINCOLN WOODS ADDITION and do hereby donate and dedicate to the public for public use forever the avenue and court and also dedicate the easements as shown on the plat for drainage and utility purposes only.

In witness whereof said Northfield Housing and Redevelopment Authority, a municipal corporation, has caused these presents to be signed by its proper officers this 24 day of June, 1936.

By Roman J. Kopp, Chairman
By Frank M. Dink, Secretary

STATE OF MINNESOTA
COUNTY OF rice
The foregoing instrument was acknowledged before me this 24 day of June, 1936, by Roman J. Kopp, Chairman and Frank M. Dink, Secretary of Northfield Housing and Redevelopment Authority, a municipal corporation, on behalf of the corporation.

Dorinda Bremer
Notary Public, rice County, Minnesota
My Commission Expires Feb. 19, 1936

I hereby certify that I have surveyed and platted the property described on this plat as LINCOLN WOODS ADDITION, that this plat is a correct representation of the survey, that all distances are correctly shown, that all monuments have been correctly placed in the ground as shown, that the outside boundary lines are correctly designated on the plat and that there are no wet lands or public highways to be designated other than as shown.

LeRoy H. Bohlen, Land Surveyor
Minnesota Registration No. 10795

STATE OF MINNESOTA
COUNTY OF rice

The foregoing Surveyor's Certificate was acknowledged before me this 24 day of June, 1936, by LeRoy H. Bohlen, Minnesota Registration No. 10795.

Dorinda Bremer
Notary Public, rice County, Minnesota
My Commission Expires Feb. 19, 1936

Approved by the Planning Commission of the City of Northfield, Minnesota, at a regular meeting thereof, on the 24 day of June, 1936.

We do hereby certify that on the 24 day of June, 1936, the City Council of Northfield, Minnesota approved this plat:

Marion J. Kopp, Mayor
Frank M. Dink, Clerk

I hereby certify that the taxes for the year 1936 for the land described on this plat as LINCOLN WOODS ADDITION have been paid on this 11 day of June, 1936.

Dorinda Bremer
County Treasurer, rice County, Minnesota
June 11, 1936

No delinquent taxes due and transfer entered this 11 day of June, 1936.

Dorinda Bremer
County Auditor, rice County, Minnesota

Document Number: 24-2201
I hereby certify that this instrument was filed in the office of the County Recorder for record this 24 day of June, 1936, at 2:00 o'clock P.M., and was duly recorded in Book 161 on page 161.

Ralph Bremer
County Recorder, rice County, Minnesota