

CITY OF NORTHFIELD

CONSTRUCTION PLANS FOR

CENTRAL PARK SITE IMPROVEMENTS (421 4TH ST. EAST)

REMOVALS, SITE GRADING, CONCRETE SIDEWALKS, PLAYGROUND CONSTRUCTION, SITE AMENITIES, AND SITE RESTORATION

JANUARY, 2026

RESOURCE LIST

CITY OF NORTHFIELD

City Hall
801 Washington Street
Northfield, MN 55057
645-8833

City Administrator:
Ben Martig

Mayor: Erica Zweifel

City Council Members:
Kathleen Holmes
Chad Beumer
Peter Dahlen
Jessica Peterson White
Brad Ness
Davin Sokup

Public Works Director / City Engineer:
David Bennett, P.E.
507-645-3006

Engineering Manager:
Sean Simonson
507-645-3049

Utility Superintendent:
Justin Wagner
507-645-3083

Streets and Parks Manager:
Andrew Tussing
507-645-3027

UTILITIES

GAS
Xcel Energy - Gas
Nathan Luedtke
507-334-2923
nathan.m.luedtke@xcelenergy.com

COMMUNICATIONS

Spectrum (Charter Communications)
Chuck Snyder
952-367-4246
charles.snyder@charter.com

Lumen (CenturyLink)
Justin Elkins
Justin.Elkins@lumen.com
(507)-577-8038

MetroNet
Chris Hart
Chris.Hart@metronet.com
(612)-709-6282

Zayo
Steven Senger
Steven.Senger@zayo.com
(952)-230-9660

ELECTRIC
Xcel Energy - Electric
TIMOTHY KEELEY
715-308-2631
Timothy.J.Keeley@xcelenergy.com

NOTE: EXISTING UTILITY INFORMATION SHOWN ON THIS PLAN HAS BEEN PROVIDED BY THE UTILITY OWNER. THE CONTRACTOR SHALL FIELD VERIFY EXACT LOCATIONS PRIOR TO COMMENCING CONSTRUCTION AS REQUIRED BY STATE LAW. NOTIFY GOPHER STATE ONE CALL, 1-800-252-1166 OR 651-454-0002.

THE SUBSURFACE UTILITY INFORMATION IN THIS PLAN IS UTILITY QUALITY LEVEL D UNLESS OTHERWISE NOTED. THIS UTILITY LEVEL WAS DETERMINED ACCORDING TO THE GUIDELINES OF CI/ASCE 38-02, ENTITLED "STANDARD GUIDELINES FOR THE COLLECTION AND DEPICTION OF EXISTING SUBSURFACE UTILITY DATA."



MAP LEGEND

PROJECT LIMITS



I HEREBY CERTIFY THAT THIS PLAN, SPECIFICATION, OR REPORT WAS PREPARED BY ME OR UNDER MY DIRECT SUPERVISION AND THAT I AM A DULY LICENSED LANDSCAPE ARCHITECT UNDER THE LAWS OF THE STATE OF MINNESOTA.

JONATHAN D. NELSEN
LIC. NO. 53433 DATE MM/DD/YYYY



12224 NICOLLET AVENUE
BURNSVILLE, MN 55337
Phone: (952) 890-0509
Email: Burns@bolton-menk.com
www.bolton-menk.com

DESIGNED	NO.	ISSUED FOR	DATE
JDN			
DRAWN			
CRT			
CHECKED			
JDN			
CLIENT PROJ. NO.			
25X140817000			

NORTHFIELD, MINNESOTA
CENTRAL PARK SITE IMPROVEMENTS

TITLE SHEET

SHEET

G0.01

© Bolton & Menk, Inc. 2026. All Rights Reserved
A:\WORK\25X140817000\CAD\2500 Central Park Sheet\1.dwg 1/6/2026 4:33:42 PM

EXISTING TOPOGRAPHIC SYMBOLS

	ACCESS GRATE		REGULATION STATION GAS
	AIR CONDITION UNIT		SATELLITE DISH
	ANTENNA		SIGN NON TRAFFIC
	AUTO SPRINKLER CONNECTION		SIGN TRAFFIC
	BARRICADE PERMANENT		SIGNAL CONTROL CABINET
	BASKETBALL POST		SOIL BORING
	BENCH		SIREN
	BIRD FEEDER		TELEPHONE BOOTH
	BOLLARD		TILE INLET
	BUSH		TILE OUTLET
	CATCH BASIN RECTANGULAR CASTING		TILE RISER
	CATCH BASIN CIRCULAR CASTING		TRANSFORMER-ELECTRIC
	CURB STOP		TREE-CONIFEROUS
	CLEAN OUT		TREE-DEAD
	CULVERT END		TREE-DECIDUOUS
	DRINKING FOUNTAIN		TREE STUMP
	DOWN SPOUT		TRAFFIC ARM BARRIER
	FILL PIPE		TRAFFIC SIGNAL
	FIRE HYDRANT		TRASH CAN
	FLAG POLE		UTILITY MARKER
	FLARED END / APRON		VALVE
	FUEL PUMP		VALVE POST INDICATOR
	GRILL		VALVE VAULT
	GUY WIRE ANCHOR		VAULT
	HANDHOLE		VENT PIPE
	HANDICAP SPACE		WATER SPIGOT
	IRRIGATION SPRINKLER HEAD		WELL
	IRRIGATION VALVE BOX		WETLAND DELINEATED MARKER
	LIFT STATION CONTROL PANEL		WETLAND
	LIFT STATION		WET WELL
	LIGHT ON POLE		YARD HYDRANT
	LIGHT-GROUND		
	MAILBOX		

PROPOSED TOPOGRAPHIC SYMBOLS

	CLEANOUT
	MANHOLE
	LIFT STATION
	STORM SEWER CIRCULAR CASTING
	STORM SEWER RECTANGULAR CASTING
	STORM SEWER FLARED END / APRON
	STORM SEWER OUTLET STRUCTURE
	STORM SEWER OVERFLOW STRUCTURE
	CURB BOX
	FIRE HYDRANT
	WATER VALVE
	WATER REDUCER
	WATER BEND
	WATER TEE
	WATER CROSS
	WATER SLEEVE
	WATER CAP / PLUG
	RIP RAP
	DRAINAGE FLOW
	TRAFFIC SIGNS

SURVEY SYMBOLS

	BENCHMARK LOCATION		CAST IRON MONUMENT
	CONTROL POINT		STONE MONUMENT
	MONUMENT FOUND		

EXISTING TOPOGRAPHIC LINES

	RETAINING WALL
	FENCE
	FENCE-DECORATIVE
	GUARD RAIL
	TREE LINE
	BUSH LINE

SURVEY LINES

	CONTROLLED ACCESS BOUNDARY
	CENTERLINE
	EXISTING EASEMENT LINE
	PROPOSED EASEMENT LINE
	EXISTING LOT LINE
	PROPOSED LOT LINE
	EXISTING RIGHT-OF-WAY
	PROPOSED RIGHT-OF-WAY
	SETBACK LINE
	SECTION LINE
	QUARTER LINE
	SIXTEENTH LINE
	TEMPORARY EASEMENT

EXISTING UTILITY LINES

	FORCEMAIN
	SANITARY SEWER
	SANITARY SERVICE
	STORM SEWER
	STORM SEWER DRAIN TILE
	WATERMAIN
	WATER SERVICE

PROPOSED UTILITY LINES

	FORCEMAIN
	SANITARY SEWER
	SANITARY SERVICE
	STORM SEWER
	STORM SEWER DRAIN TILE
	WATERMAIN
	WATER SERVICE
	PIPE CASING
	TRENCHLESS PIPE (PLAN VIEW)
	TRENCHLESS PIPE (PROFILE VIEW)

GRADING INFORMATION

	EXISTING CONTOUR MINOR
	EXISTING CONTOUR MAJOR
	PROPOSED CONTOUR MINOR
	PROPOSED CONTOUR MAJOR
	PROPOSED GRADING LIMITS / SLOPE LIMITS
	PROJECT LIMITS
	PROPOSED SPOT ELEVATION
	RISE:RUN (SLOPE)

HATCH PATTERNS

	BITUMINOUS		GRAVEL
	CONCRETE		

EXISTING PRIVATE UTILITY LINES

NOTE:

EXISTING UTILITY INFORMATION SHOWN ON THIS PLAN HAS BEEN PROVIDED BY THE UTILITY OWNER. THE CONTRACTOR SHALL FIELD VERIFY EXACT LOCATIONS PRIOR TO COMMENCING CONSTRUCTION AS REQUIRED BY STATE LAW. NOTIFY GOPHER STATE ONE CALL, 1-800-252-1166 OR 651-454-0002.

THE SUBSURFACE UTILITY INFORMATION IN THIS PLAN IS UTILITY QUALITY LEVEL D UNLESS OTHERWISE NOTED. THIS UTILITY LEVEL WAS DETERMINED ACCORDING TO THE GUIDELINES OF CI/ASCE 38-22, ENTITLED "STANDARD GUIDELINE FOR INVESTIGATING AND DOCUMENTING EXISTING UTILITIES".

	UNDERGROUND FIBER OPTIC
	UNDERGROUND ELECTRIC
	UNDERGROUND GAS
	UNDERGROUND COMMUNICATION
	OVERHEAD ELECTRIC
	OVERHEAD COMMUNICATION
	OVERHEAD UTILITY

UTILITIES IDENTIFIED WITH A QUALITY LEVEL :

LINE TYPES FOLLOW THE FORMAT: UTILITY TYPE - QUALITY LEVEL

EXAMPLE: G-A G-A UNDERGROUND GAS, QUALITY LEVEL A

UTILITY QUALITY LEVEL (A,B,C,D) DEFINITIONS CAN BE FOUND IN CI/ASCE 38-22.

UTILITY QUALITY LEVELS:

QUALITY LEVEL D: PROVIDES THE MOST BASIC LEVEL OF INFORMATION. IT INVOLVES COLLECTING DATA FROM EXISTING UTILITY RECORDS. RECORDS MAY INCLUDE AS-BUILT DRAWINGS, DISTRIBUTION AND SERVICES MAPS, EXISTING GEOGRAPHIC INFORMATION SYSTEM DATABASES, CONSTRUCTION PLANS, ETC.

QUALITY LEVEL C: INVOLVES SURVEYING VISIBLE SUBSURFACE UTILITY STRUCTURES SUCH AS MANHOLES, HAND-HOLES, UTILITY VALVES AND METERS, FIRE HYDRANTS, PEDESTALS AND UTILITY MARKERS, AND THEN CORRELATING THE INFORMATION WITH EXISTING UTILITY RECORDS TO CREATE COMPOSITE DRAWINGS. INCLUDES QUALITY LEVEL D ACTIVITIES.

QUALITY LEVEL B: INVOLVES DESIGNATING THE HORIZONTAL POSITION OF SUBSURFACE UTILITIES THROUGH SURFACE DETECTION METHODS AND COLLECTING THE INFORMATION THROUGH A SURVEY METHOD. INCLUDES QUALITY LEVEL C AND D TASKS.

QUALITY LEVEL A: PROVIDES THE HIGHEST LEVEL OF ACCURACY. IT INVOLVES LOCATING OR POTHOLING UTILITIES AS WELL AS ACTIVITIES IN QUALITY LEVELS B, C, AND D. THE LOCATED FACILITY INFORMATION IS SURVEYED AND MAPPED AND THE DATA PROVIDES PRECISE PLAN AND PROFILE INFORMATION.

ABBREVIATIONS

A	ALGEBRAIC DIFFERENCE	GRAV	GRAVEL	RSC	RIGID STEEL CONDUIT
ADJ	ADJUST	GU	GUTTER	RT	RIGHT
ALT	ALTERNATE	GV	GATE VALVE	SAN	SANITARY SEWER
B-B	BACK TO BACK	HDPE	HIGH DENSITY POLYETHYLENE	SCH	SCHEDULE
BIT	BITUMINOUS	HH	HANDHOLE	SERV	SERVICE
BLDG	BUILDING	HP	HIGH POINT	SHLD	SHOULDER
BMP	BEST MANAGEMENT PRACTICE	HWL	HIGH WATER LEVEL	STA	STATION
BR	BEGIN RADIUS	HYD	HYDRANT	STD	STANDARD
BV	BUTTERFLY VALVE	I	INVERT	STM	STORM SEWER
CB	CATCH BASIN	K	CURVE COEFFICIENT	TC	TOP OF CURB
C&G	CURB AND GUTTER	L	LENGTH	TE	TEMPORARY EASEMENT
CIP	CAST IRON PIPE	LO	LOWEST OPENING	TEMP	TEMPORARY
CIPP	CURED-IN-PLACE PIPE	LP	LOW POINT	TNH	TOP NUT HYDRANT
CL	CENTER LINE	LT	LEFT	TP	TOP OF PIPE
CL.	CLASS	MAX	MAXIMUM	TYP	TYPICAL
CLVT	CULVERT	MH	MANHOLE	VCP	VITRIFIED CLAY PIPE
CMP	CORRUGATED METAL PIPE	MIN	MINIMUM	VERT	VERTICAL
C.O.	CHANGE ORDER	MR	MID RADIUS	VPC	VERTICAL POINT OF CURVE
COMM	COMMUNICATION	NIC	NOT IN CONTRACT	VPI	VERTICAL POINT OF INTERSECTION
CON	CONCRETE	NMC	NON-METALLIC CONDUIT	VPT	VERTICAL POINT OF TANGENT
CSP	CORRUGATED STEEL PIPE	NTS	NOT TO SCALE	WM	WATERMAIN
DIA	DIAMETER	NWL	NORMAL WATER LEVEL		
DIP	DUCTILE IRON PIPE	OHW	ORDINARY HIGH WATER LEVEL		
DWY	DRIVEWAY	PC	POINT OF CURVE	AC	ACRES
E	EXTERNAL CURVE DISTANCE	PCC	POINT OF COMPOUND CURVE	CF	CUBIC FEET
ELEC	ELECTRIC	PE	PERMANENT EASEMENT	CV	COMPACTED VOLUME
ELEV	ELEVATION	PED	PEDESTRIAN, PEDESTAL	CY	CUBIC YARD
EOF	EMERGENCY OVERFLOW	PERF	PERFORATED PIPE	EA	EACH
ER	END RADIUS	PERM	PERMANENT	EV	EXCAVATED VOLUME
ESMT	EASEMENT	PI	POINT OF INTERSECTION	LB	POUND
EX	EXISTING	PL	PROPERTY LINE	LF	LINEAR FEET
FES	FLARED END SECTION	PRC	POINT OF REVERSE CURVE	LS	LUMP SUM
F-F	FACE TO FACE	PT	POINT OF TANGENT	LV	LOOSE VOLUME
FF	FINISHED FLOOR	PVC	POLYVINYL CHLORIDE PIPE	SF	SQUARE FEET
F&I	FURNISH AND INSTALL	PVMT	PAVEMENT	SV	STOCKPILE VOLUME
FM	FORCEMAIN	R	RADIUS	SY	SQUARE YARD
FO	FIBER OPTIC	R/W	RIGHT-OF-WAY		
F.O.	FIELD ORDER	RCP	REINFORCED CONCRETE PIPE		
GRAN	GRANULAR	RET	RETAINING		



I HEREBY CERTIFY THAT THIS PLAN, SPECIFICATION, OR REPORT WAS PREPARED BY ME OR UNDER MY DIRECT SUPERVISION AND THAT I AM A DULY LICENSED LANDSCAPE ARCHITECT UNDER THE LAWS OF THE STATE OF MINNESOTA.

JONATHAN D. NELSEN
LIC. NO. 53433 DATE MM/DD/YYYY



12224 NICOLLET AVENUE
BURNSVILLE, MN 55337
Phone: (952) 890-0509
Email: BurnsVille@bolton-menk.com
www.bolton-menk.com

DESIGNED	JDN	NO.	ISSUED FOR	DATE
DRAWN	CRT			
CHECKED	JDN			
CLIENT PROJ. NO.	25X140817000			

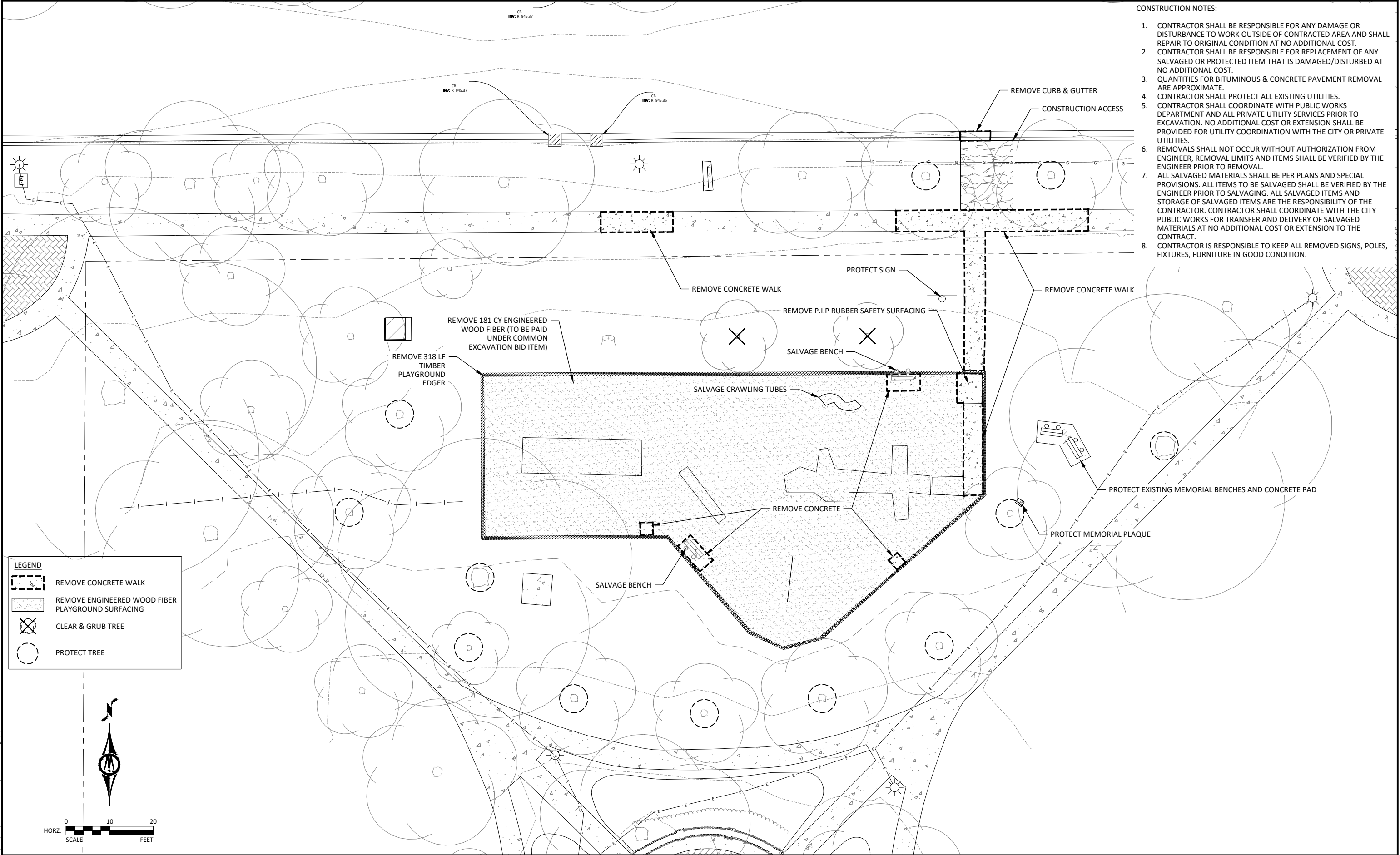
NORTHFIELD, MINNESOTA

CENTRAL PARK SITE IMPROVEMENTS

LEGEND

SHEET

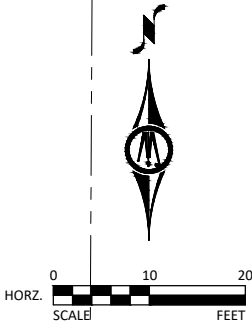
G0.02



- CONSTRUCTION NOTES:
1. CONTRACTOR SHALL BE RESPONSIBLE FOR ANY DAMAGE OR DISTURBANCE TO WORK OUTSIDE OF CONTRACTED AREA AND SHALL REPAIR TO ORIGINAL CONDITION AT NO ADDITIONAL COST.
 2. CONTRACTOR SHALL BE RESPONSIBLE FOR REPLACEMENT OF ANY SALVAGED OR PROTECTED ITEM THAT IS DAMAGED/DISTURBED AT NO ADDITIONAL COST.
 3. QUANTITIES FOR BITUMINOUS & CONCRETE PAVEMENT REMOVAL ARE APPROXIMATE.
 4. CONTRACTOR SHALL PROTECT ALL EXISTING UTILITIES.
 5. CONTRACTOR SHALL COORDINATE WITH PUBLIC WORKS DEPARTMENT AND ALL PRIVATE UTILITY SERVICES PRIOR TO EXCAVATION. NO ADDITIONAL COST OR EXTENSION SHALL BE PROVIDED FOR UTILITY COORDINATION WITH THE CITY OR PRIVATE UTILITIES.
 6. REMOVALS SHALL NOT OCCUR WITHOUT AUTHORIZATION FROM ENGINEER, REMOVAL LIMITS AND ITEMS SHALL BE VERIFIED BY THE ENGINEER PRIOR TO REMOVAL.
 7. ALL SALVAGED MATERIALS SHALL BE PER PLANS AND SPECIAL PROVISIONS. ALL ITEMS TO BE SALVAGED SHALL BE VERIFIED BY THE ENGINEER PRIOR TO SALVAGING. ALL SALVAGED ITEMS AND STORAGE OF SALVAGED ITEMS ARE THE RESPONSIBILITY OF THE CONTRACTOR. CONTRACTOR SHALL COORDINATE WITH THE CITY PUBLIC WORKS FOR TRANSFER AND DELIVERY OF SALVAGED MATERIALS AT NO ADDITIONAL COST OR EXTENSION TO THE CONTRACT.
 8. CONTRACTOR IS RESPONSIBLE TO KEEP ALL REMOVED SIGNS, POLES, FIXTURES, FURNITURE IN GOOD CONDITION.

LEGEND

- REMOVE CONCRETE WALK
- REMOVE ENGINEERED WOOD FIBER PLAYGROUND SURFACING
- CLEAR & GRUB TREE
- PROTECT TREE



© Bolton & Menk, Inc. 2025. All Rights Reserved
A:\WORK\25140817000\CAD\3D\Central Park Sheets\140817C001.dwg 1/6/2024 4:33:15 PM



I HEREBY CERTIFY THAT THIS PLAN, SPECIFICATION, OR REPORT WAS PREPARED BY ME OR UNDER MY DIRECT SUPERVISION AND THAT I AM A DULY LICENSED LANDSCAPE ARCHITECT UNDER THE LAWS OF THE STATE OF MINNESOTA.

JONATHAN D. NELSEN
LIC. NO. 53433 DATE MM/DD/YYYY



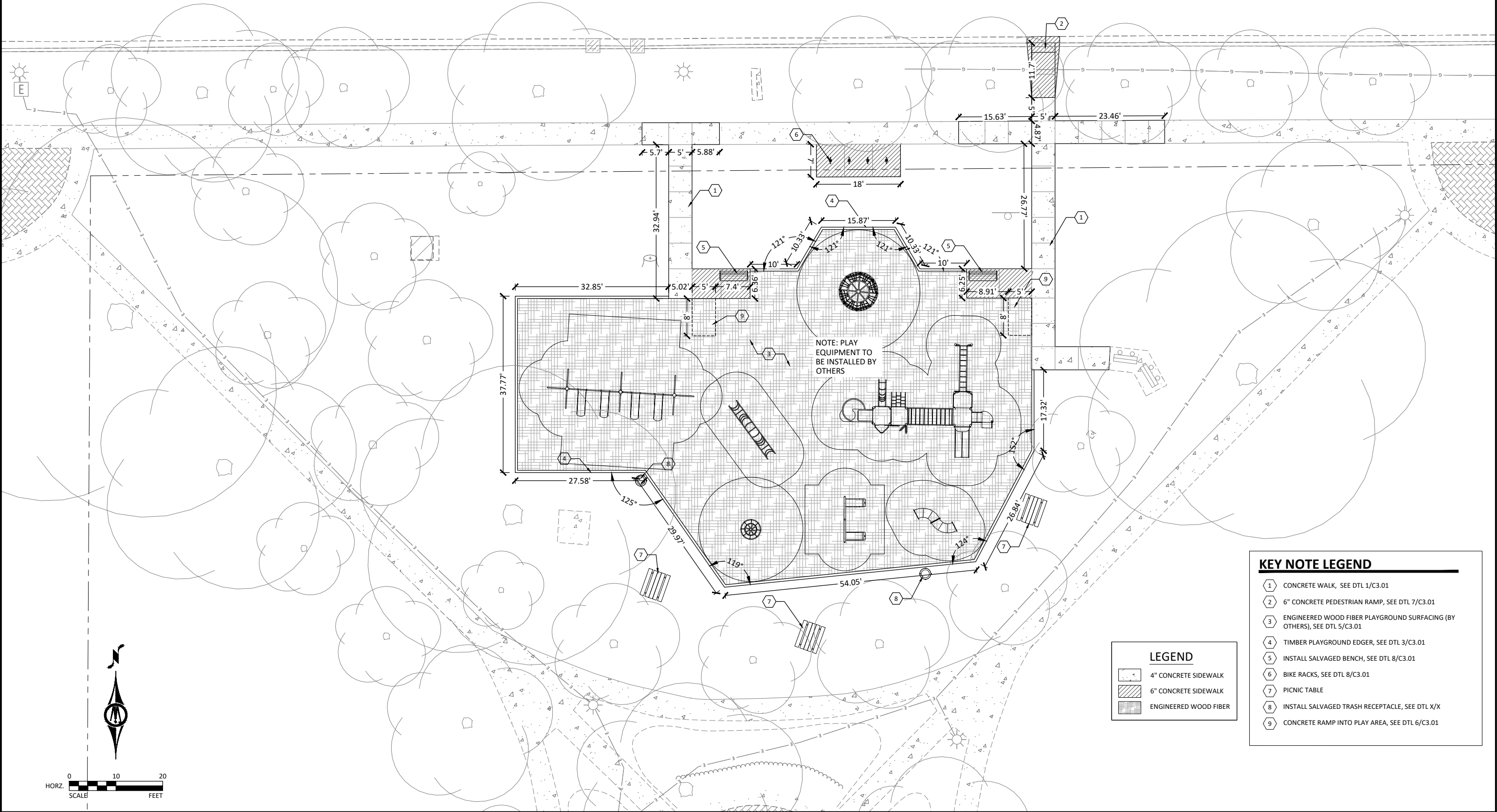
12224 NICOLLET AVENUE
BURNSVILLE, MN 55337
Phone: (952) 890-0509
Email: Burnsville@bolton-menk.com
www.bolton-menk.com

DESIGNED	NO.	ISSUED FOR	DATE
JDN			
DRAWN			
CRT			
CHECKED			
JDN			
CLIENT PROJ. NO.			
25X140817000			

NORTHFIELD, MINNESOTA
CENTRAL PARK SITE IMPROVEMENTS
EXISTING CONDITIONS & REMOVALS

SHEET
C0.01

3RD ST. EAST



LEGEND

- 4" CONCRETE SIDEWALK
- 6" CONCRETE SIDEWALK
- ENGINEERED WOOD FIBER

KEY NOTE LEGEND

- 1 CONCRETE WALK, SEE DTL 1/C3.01
- 2 6" CONCRETE PEDESTRIAN RAMP, SEE DTL 7/C3.01
- 3 ENGINEERED WOOD FIBER PLAYGROUND SURFACING (BY OTHERS), SEE DTL 5/C3.01
- 4 TIMBER PLAYGROUND EDGER, SEE DTL 3/C3.01
- 5 INSTALL SALVAGED BENCH, SEE DTL 8/C3.01
- 6 BIKE RACKS, SEE DTL 8/C3.01
- 7 PICNIC TABLE
- 8 INSTALL SALVAGED TRASH RECEPTACLE, SEE DTL X/X
- 9 CONCRETE RAMP INTO PLAY AREA, SEE DTL 6/C3.01

© Bolton & Menk, Inc. 2025. All Rights Reserved. A:\WORK\25140817000\CAD\3D\Central Park Sheets\140817C101.dwg, 1/6/2025 4:34:08 PM



I HEREBY CERTIFY THAT THIS PLAN, SPECIFICATION, OR REPORT WAS PREPARED BY ME OR UNDER MY DIRECT SUPERVISION AND THAT I AM A DULY LICENSED LANDSCAPE ARCHITECT UNDER THE LAWS OF THE STATE OF MINNESOTA.

JONATHAN D. NELSEN
LIC. NO. 53433 DATE MM/DD/YYYY

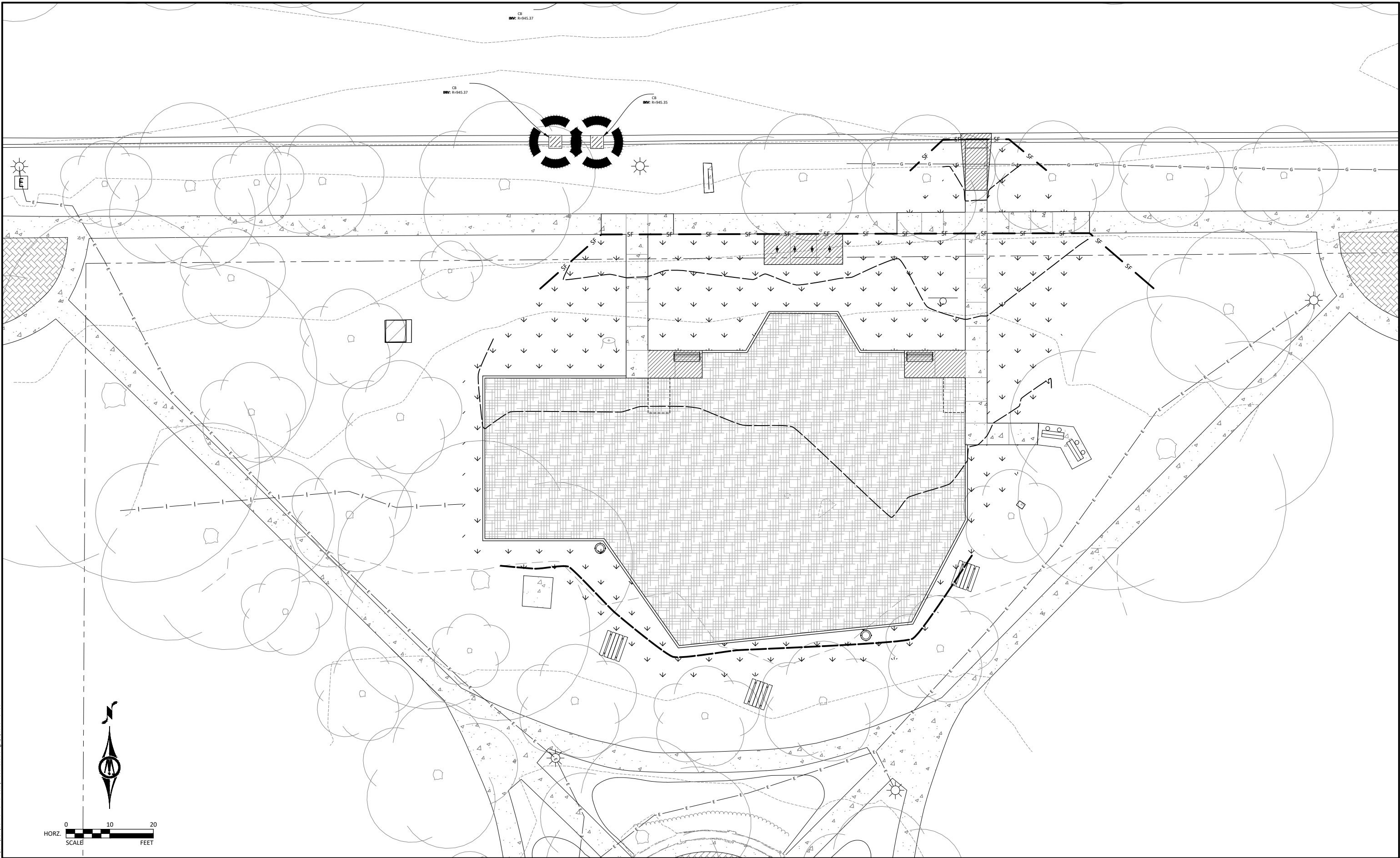


12224 NICOLLET AVENUE
BURNSVILLE, MN 55337
Phone: (952) 890-0509
Email: BurnsVille@bolton-menk.com
www.bolton-menk.com

DESIGNED	NO.	ISSUED FOR	DATE
JDN			
DRAWN			
CRT			
CHECKED			
JDN			
CLIENT PROJ. NO.			
25X140817000			

NORTHFIELD, MINNESOTA
CENTRAL PARK SITE IMPROVEMENTS
SITE PLAN

SHEET
C1.01



© Bolton & Menk, Inc. 2025. All Rights Reserved
A:\WORK\25140817000\CAD\2501 Central Park Sheets\140817C202.dwg 1/6/2025 4:34:38 PM



I HEREBY CERTIFY THAT THIS PLAN, SPECIFICATION, OR REPORT WAS PREPARED BY ME OR UNDER MY DIRECT SUPERVISION AND THAT I AM A DULY LICENSED LANDSCAPE ARCHITECT UNDER THE LAWS OF THE STATE OF MINNESOTA.

JONATHAN D. NELSEN
LIC. NO. 53433 DATE MM/DD/YYYY



12224 NICOLLET AVENUE
BURNSVILLE, MN 55337
Phone: (952) 890-0509
Email: BurnsVille@bolton-menk.com
www.bolton-menk.com

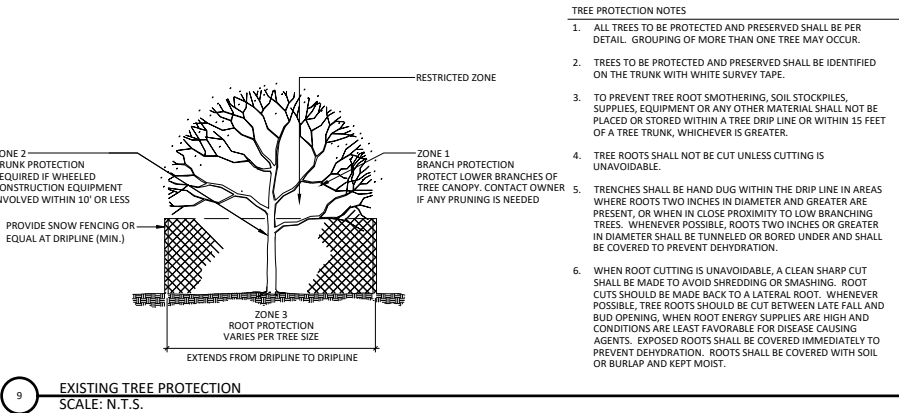
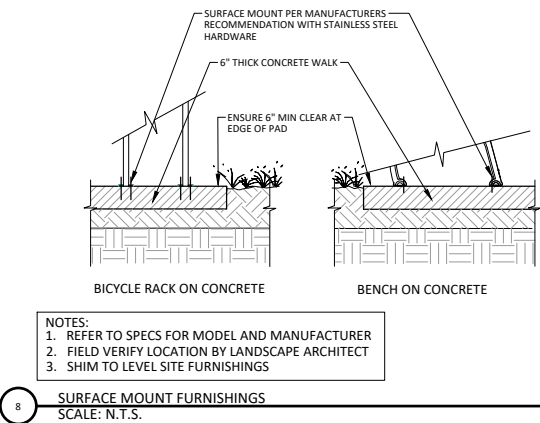
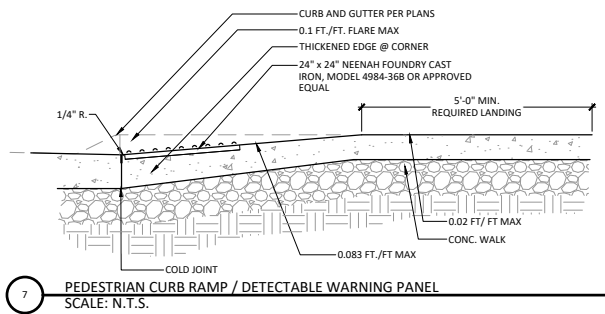
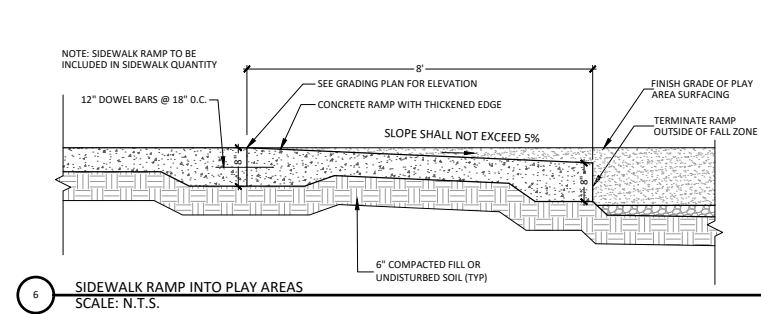
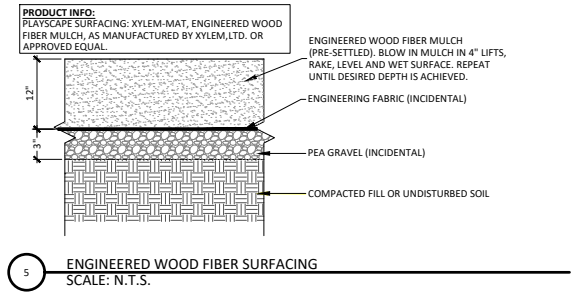
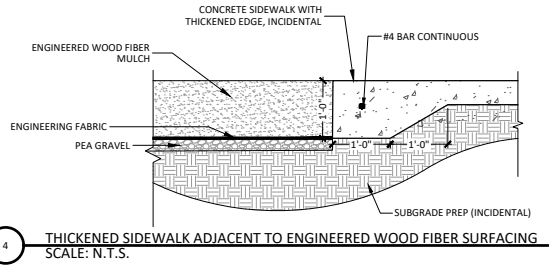
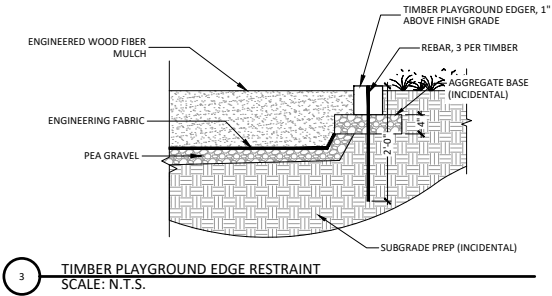
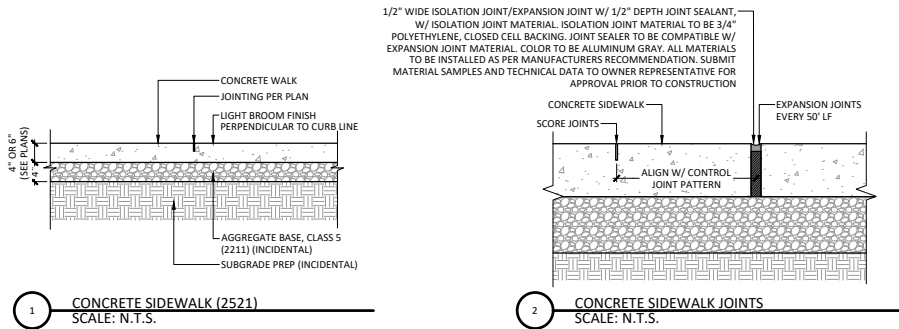
DESIGNED	JDN	NO.	ISSUED FOR	DATE
DRAWN	CRT			
CHECKED	JDN			
CLIENT PROJ. NO.	25X140817000			

NORTHFIELD, MINNESOTA
CENTRAL PARK SITE IMPROVEMENTS

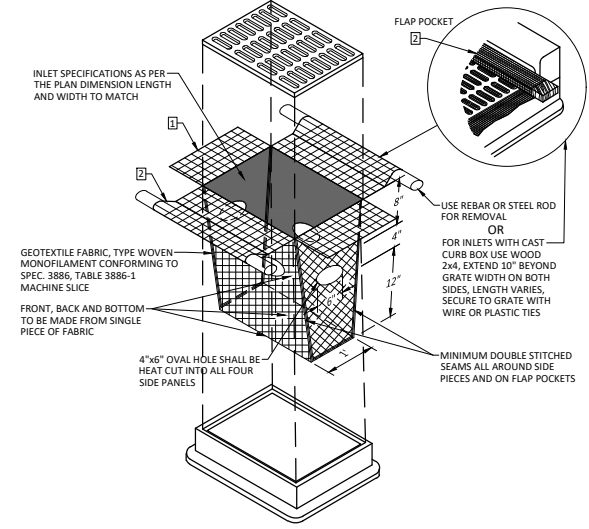
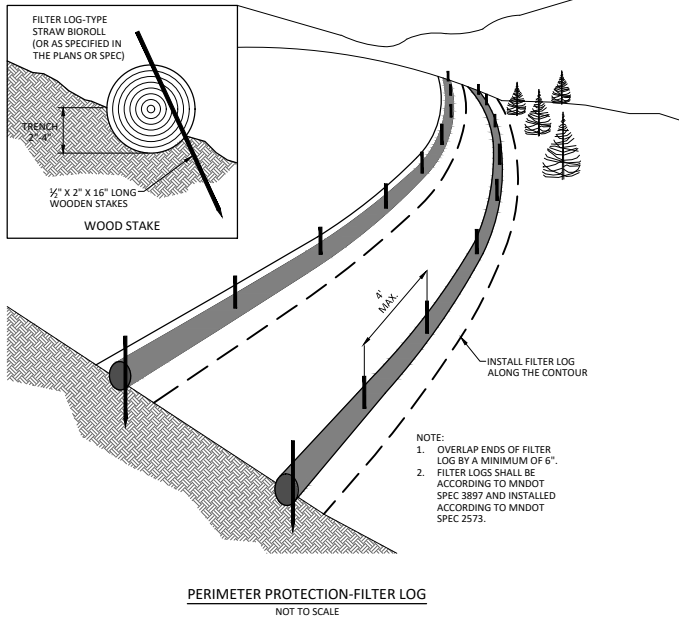
EROSION CONTROL & TURF ESTABLISHMENT PLAN

SHEET

C2.02



- TREE PROTECTION NOTES
- ALL TREES TO BE PROTECTED AND PRESERVED SHALL BE PER DETAIL. GROUPING OF MORE THAN ONE TREE MAY OCCUR.
 - TREES TO BE PROTECTED AND PRESERVED SHALL BE IDENTIFIED ON THE TRUNK WITH WHITE SURVEY TAPE.
 - TO PREVENT TREE ROOT SMOTHERING, SOIL STOCKPILES, SUPPLIES, EQUIPMENT OR ANY OTHER MATERIAL SHALL NOT BE PLACED OR STORED WITHIN A TREE DRIP LINE OR WITHIN 15 FEET OF A TREE TRUNK, WHICHEVER IS GREATER.
 - TREE ROOTS SHALL NOT BE CUT UNLESS CUTTING IS UNAVOIDABLE.
 - TRENCHES SHALL BE HAND DUG WITHIN THE DRIP LINE IN AREAS WHERE ROOTS TWO INCHES IN DIAMETER AND GREATER ARE PRESENT, OR WHEN IN CLOSE PROXIMITY TO LOW BRANCHING TREES. WHENEVER POSSIBLE, ROOTS TWO INCHES OR GREATER IN DIAMETER SHALL BE TUNNELED OR BORED UNDER AND SHALL BE COVERED TO PREVENT DEHYDRATION.
 - WHEN ROOT CUTTING IS UNAVOIDABLE, A CLEAN SHARP CUT SHALL BE MADE TO AVOID SHREDDING OR SMASHING. ROOT CUTS SHOULD BE MADE BACK TO A LATERAL ROOT. WHENEVER POSSIBLE, TREE ROOTS SHOULD BE CUT BETWEEN LATE FALL AND BUD OPENING. WHEN ROOT ENERGY SUPPLIES ARE HIGH AND CONDITIONS ARE LEAST FAVORABLE FOR DISEASE CAUSING AGENTS. EXPOSED ROOTS SHALL BE COVERED IMMEDIATELY TO PREVENT DEHYDRATION. ROOTS SHALL BE COVERED WITH SOIL OR BURLAP AND KEPT MOIST.
 - WATERING OF PROTECTED TREES IN WHICH ROOTS WERE CUT SHALL BE PROVIDED BY THE CONTRACTOR.
 - AUGER TUNNELING RATHER THAN TRENCHING SHOULD BE USED FOR UTILITY PLACEMENT WITHIN DRIP LINE OF TREE.
 - FENCING MATERIAL SHALL ENCIRCLE ANY TREE WHOSE OUTER DRIP LINE EDGE IS WITHIN 20 FEET OF ANY CONSTRUCTION ACTIVITIES.
 - FENCING MATERIAL SHALL BE BRIGHT, CONTRASTING COLOR, DURABLE, AND A MINIMUM OF FOUR FEET IN HEIGHT.
 - FENCING MATERIAL SHALL BE SET AT THE DRIP LINE OR 15 FEET FROM TREE TRUNK, WHICHEVER IS GREATER, AND MAINTAINED IN AN UPRIGHT POSITION THROUGHOUT THE DURATION OF CONSTRUCTION ACTIVITIES.
 - ANY GRADE CHANGES (SUCH AS THE REMOVAL OF TOPSOIL OR ADDITION OF FILL MATERIAL) WITHIN THE DRIP LINE SHOULD BE AVOIDED FOR EXISTING TREES TO REMAIN. RETAINING WALLS AND TREE WELLS ARE ACCEPTABLE ONLY WHEN CONSTRUCTED PRIOR TO GRADE CHANGE.



- NOTES:
- INLET PROTECTION DEVICES SHALL BE MAINTAINED OR REPLACED AT THE DIRECTION OF THE ENGINEER. MANUFACTURED ALTERNATIVES APPROVED AND LISTED ON THE DEPARTMENTS EROSION CONTROL PRODUCT ACCEPTABILITY LIST MAY BE SUBSTITUTED. WHEN REMOVING OR MAINTAINING INLET PROTECTION, CARE SHALL BE TAKEN SO THAT THE SEDIMENT TRAPPED ON THE GEOTEXTILE FABRIC DOES NOT FALL IN THE INLET. ANY MATERIAL FALLING INTO THE INLET SHALL BE REMOVED IMMEDIATELY.
 - FINISHED SIZE, INCLUDING POCKETS WHERE REQUIRED, SHALL EXTEND A MINIMUM OF 10" AROUND THE PERIMETER TO FACILITATE MAINTENANCE OR REMOVAL.
- FLAP POCKETS SHALL BE LARGE ENOUGH TO ACCEPT WOOD 2x4.
- INSTALLATION NOTES:
DO NOT INSTALL PROTECTION IN INLETS SHALLOWER THAN 30", MEASURED FROM THE BOTTOM OF THE INLET TO THE TOP OF THE GRATE.
TRIM EXCESS FABRIC IN THE FLOW LINE TO WITHIN 3" OF THE GRATE.
- THE INSTALLED BAG SHALL HAVE A MINIMUM SIDE CLEARANCE, BETWEEN THE INLET AND THE BAG, MEASURED AT THE BOTTOM OF THE OVERFLOW HOLES, OF 3". WHERE NECESSARY THE CONTRACTOR SHALL CLINCH THE BAG, USING PLASTIC ZIP TIES, TO ACHIEVE THE 3" CLEARANCE. THE TIES SHALL BE PLACED AT A MAXIMUM OF 4' FROM THE BOTTOM OF THE BAG.



INLET PROTECTION
GEOTEXTILE BAG
NOT TO SCALE

LAST REVISION:
04-2021
PLATE NO.
3-104

© Bolton & Menk, Inc. 2025. All Rights Reserved
A:\WORK\251408 17000 CAD\3D Central Park Sheets\140817C301.dwg, 1/6/2024 4:34:46 PM



I HEREBY CERTIFY THAT THIS PLAN, SPECIFICATION, OR REPORT WAS PREPARED BY ME OR UNDER MY DIRECT SUPERVISION AND THAT I AM A DULY LICENSED LANDSCAPE ARCHITECT UNDER THE LAWS OF THE STATE OF MINNESOTA.

JONATHAN D. NELSEN
LIC. NO. 53433 DATE MM/DD/YYYY



12224 NICOLLET AVENUE
BURNSVILLE, MN 55337
Phone: (952) 890-0509
Email: BurnsVille@bolton-menk.com
www.bolton-menk.com

DESIGNED	NO.	ISSUED FOR	DATE
JDN			
DRAWN			
CRT			
CHECKED			
JDN			
CLIENT PROJ. NO.			
25X140817000			

NORTHFIELD, MINNESOTA
CENTRAL PARK SITE IMPROVEMENTS
DETAILS

SHEET
C3.01