

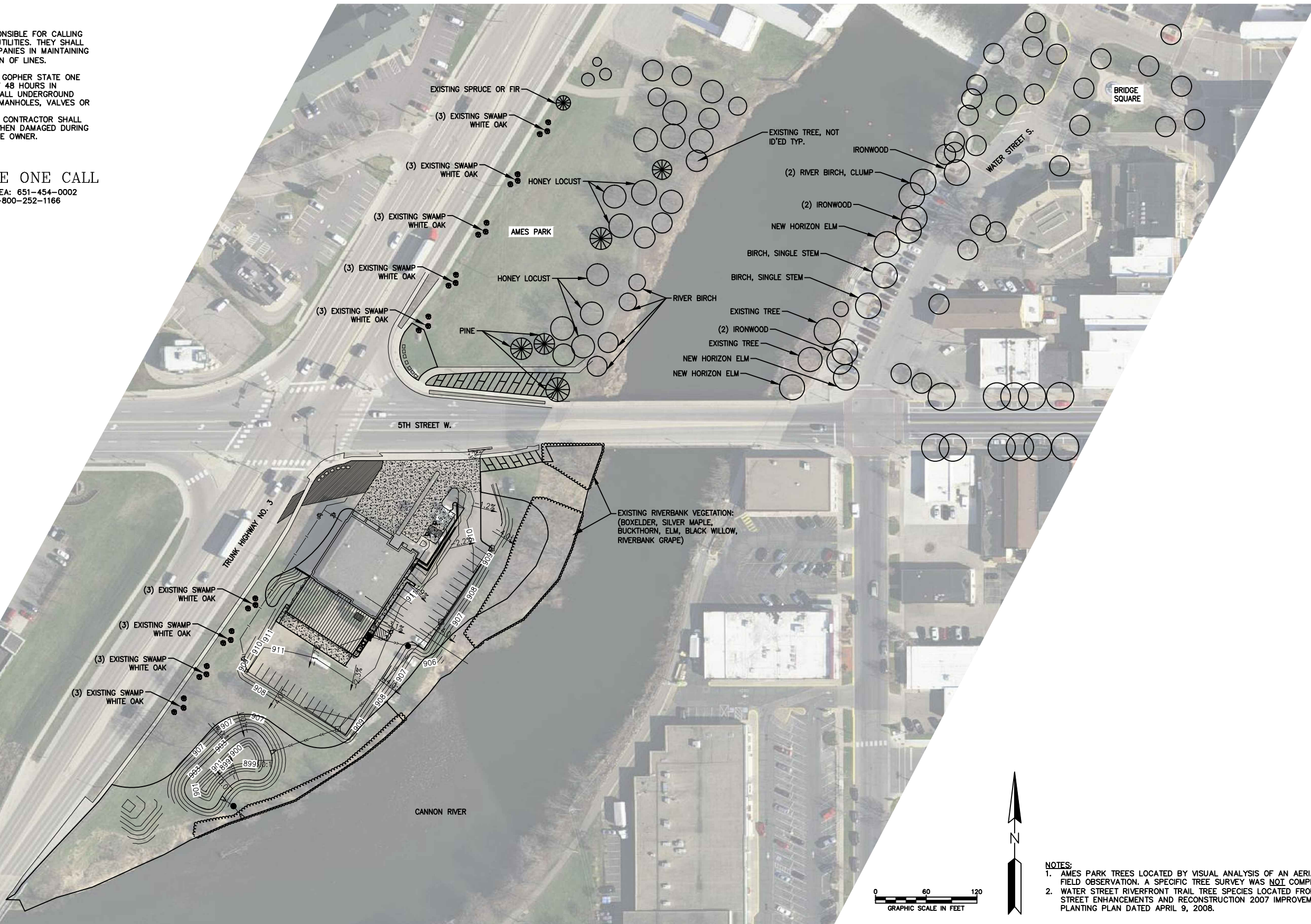
WARNING:

THE CONTRACTOR SHALL BE RESPONSIBLE FOR CALLING FOR LOCATIONS OF ALL EXISTING UTILITIES. THEY SHALL COOPERATE WITH ALL UTILITY COMPANIES IN MAINTAINING THEIR SERVICE AND/OR RELOCATION OF LINES.

THE CONTRACTOR SHALL CONTACT GOPHER STATE ONE CALL AT 651-454-0002 AT LEAST 48 HOURS IN ADVANCE FOR THE LOCATIONS OF ALL UNDERGROUND WIRES, CABLES, CONDUITS, PIPES, MANHOLES, VALVES OR OTHER BURIED STRUCTURES BEFORE DIGGING. THE CONTRACTOR SHALL REPAIR OR REPLACE THE ABOVE WHEN DAMAGED DURING CONSTRUCTION AT NO COST TO THE OWNER.

CALL BEFORE YOU DIG
GOPHER STATE ONE CALL
 TWIN CITY AREA: 651-454-0002
 TOLL FREE 1-800-252-1166

NOTES: SEE SHEET C-100



- NOTES:**
- AMES PARK TREES LOCATED BY VISUAL ANALYSIS OF AN AERIAL IMAGE AND SPECIES IDENTIFIED BY FIELD OBSERVATION. A SPECIFIC TREE SURVEY WAS NOT COMPLETED.
 - WATER STREET RIVERFRONT TRAIL TREE SPECIES LOCATED FROM WATER STREET PARKING/5TH STREET ENHANCEMENTS AND RECONSTRUCTION 2007 IMPROVEMENTS NO. 09 SITE LAYOUT & PLANTING PLAN DATED APRIL 9, 2008.

#	DESCRIPTION	XXX	XXX	XX/XX/XX	
REV	REVISION DESCRIPTION	DWN	APP	REV DATE	

SEAL

NOT FOR CONSTRUCTION

CONSULTANT

Responsive partner. Exceptional outcomes.

PROJECT TITLE

NORTHFIELD FIRE STATION ADDITION

CITY OF NORTHFIELD

SHEET TITLE						LANDSCAPE CONTEXT					
DWN BY	CHK'D	APP'D	DWG DATE	APRIL 2017		SCALE		AS SHOWN			
PROJECT NO.	SHEET NO.		L-101		REV NO.						