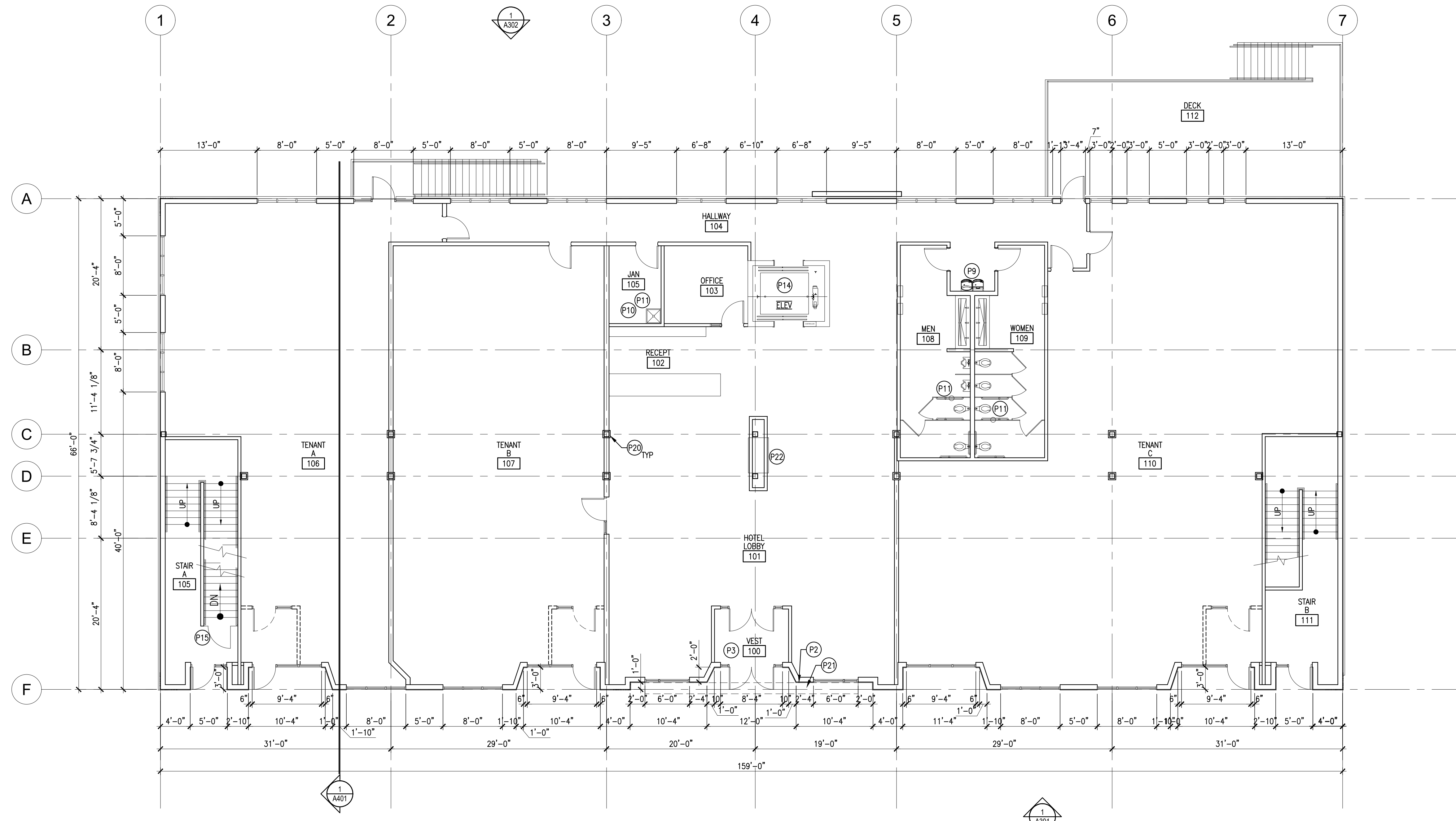


PLAN GENERAL NOTES

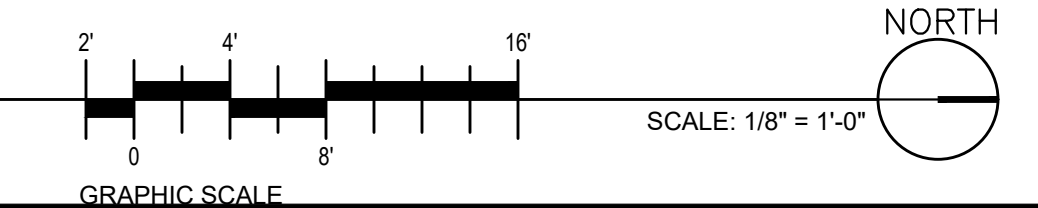
- DIMENSIONS ON EXTERIOR WALLS ARE TO THE INSIDE FACE OF FOUNDATION WALL AND/OR METAL STUD FRAMING
- ALL DOOR FRAMES ARE 4" FROM ADJACENT WALL ON HINGE SIDE, UNO
- VERIFY FINAL LOCATION OF ALL EQUIPMENT PRIOR TO INSTALLATION OF ELECTRICAL, PLUMBING OR MECHANICAL HOOK-UPS.
- ALL WALLS TO ROOF DECK, UNO TO ACCOMMODATE DEFLECTION OF THE ROOF AND FLOOR STRUCTURE, ASSEMBLY TO BE UL LISTED
- PROVIDE CONTROL JOINTS IN GYP BD WALLS AS RECOMMENDED BY MANUF
- PROVIDE MOISTURE RESISTANT GYP BD ON TOILET ROOM WET WALLS AND ADJACENT TO MOP SINK
- PROVIDE 4'x8' FIRE RATED TREATED PLYWOOD ON WALL IN ELECT ROOM FOR TELEPHONE DEMARCATION POINT
- NO COMBUSTIBLE MATERIALS ALLOWED IN PLENUM SPACE
- SEAL ALL OPENINGS OR PENETRATIONS IN THE TENANT DEMISING WALLS, AND OPEN AREAS AT THE ROOF DECK WALL INTERSECTION, TO PREVENT ODOR OR SOUND FROM BEING TRANSMITTED THROUGH OPENINGS INTO ADJACENT TENANT SPACES. MAINTAIN FIRE RATING AT ALL RATED WALLS/FLOORS
- PROVIDE DIRECTIONAL EXIT SIGNS PER CODE (SECTION 1013.1), SEE ELEC PLANS
- SEE CIVIL PLANS FOR SLAB ELEVATIONS
- SEE STRUCTURAL PLANS FOR COLUMN/BEAM LOCATIONS
- PROVIDE AND POST "OCCUPANCY LOAD X" SIGN IN ALL ASSEMBLY OCCUPANCIES, IBC SECTION 1004.3, SEE SHEET A009

PLAN KEYNOTES

- NOTE: NOT ALL NOTES ARE USED ON EACH SHEET
- (P1) PROVIDE SEMI-RECESSED FIRE CABINET W/ PORTABLE FIRE EXTINGUISHER, PER IBC 906, SEE DETAIL 1/A1001.
 - (P2) PROVIDE RECESSED FIRE DEPARTMENT KEY BOX, COORDINATE LOCATION W/ FIRE MARSHAL
 - (P3) PROVIDE SEMI-RECESSED FIRE ANNUNCIATOR PANEL
 - (P4) PROVIDE CONCRETE PATIO SYSTEM, SEE CIVIL PLANS
 - (P5) PROVIDE STRUC STOOP AT DOOR, W/ 18" MIN CONC ON PULL/LATCH SIDE OF DOOR (STOOP HIGH POINT TO BE 1/4" BELOW T.O.S. ELEV SLOPE CONC AWAY FROM DOOR 1/4" PER FT), SEE STRUC PLANS FOR SIZE AND COORD W/ CIVIL PLANS
 - (P6) PROVIDE ELECTRICAL PANELS, SEE ELEC PLANS
 - (P7) NOT USED
 - (P8) PROVIDE HOSE BIB, SEE PLUMBING PLANS
 - (P9) PROVIDE ELECTRIC WATER COOLER/ BOTTLE FILLER COMBO, SEE PLUMBING PLANS
 - (P10) PROVIDE MOP SINK, SEE PLUMBING PLANS
 - (P11) PROVIDE FLOOR DRAIN, SEE DETAIL 15/A1001. SEE PLUMBING PLANS
 - (P12) PROVIDE RAIN LEADER, SEE PLUMBING AND CIVIL PLANS
 - (P13) PROVIDE RECYCLING AREA, PER SPS 362
 - (P14) PROVIDE MACHINE ROOM-LESS TRACTION ELEVATOR (3,500 LBS), COORDINATE SHAFT SIZES, PIT DEPTH AND OVERRUN DISTANCE W/ ELEVATOR SUPPLIER
 - (P15) PROVIDE EXIT DISCHARGE BARRIER (GATE), PER IBC SECTION 1023.8, SEE DETAIL 14/A1001
 - (P16) PROVIDE SHIPS LADDER FOR ROOF ACCESS
 - (P17) PROVIDE RETAINING WALL W/ GUARDRAIL SYSTEM, SEE CIVIL
 - (P18) NOT USED
 - (P19) NOT USED
 - (P20) WRAP STRUCT COLUMN AND/OR ROOF DRAIN AS TIGHT AS POSSIBLE W/ MTL FRAMING AND 5/8" GYP BD
 - (P21) LINE OF CANOPY ABOVE
 - (P22) PROVIDE DOUBLE SIDED GAS FIREPLACE



1 FIRST LEVEL FLOOR PLAN
 A102



© 2026
 AMICON CONST. CO.
 All rights reserved.
 THE DRAWING IS AN INSTRUMENT
 OF SERVICE AND IS THE PROPERTY
 OF AMICON CONST. CO. IT IS TO BE
 USED ONLY FOR THE PROJECT AND
 REPRODUCED WITHOUT WRITTEN
 AUTHORITY IS PROHIBITED.

PROPOSED NEW BUILDING FOR:
THE ARCHER HOUSE
 212 DIVISION STREET S, NORTHFIELD, MINNESOTA

ISSUES / REVISIONS:

SITE PLAN REVIEW	04.20.2026
HFC REVIEW	05.22.2026
30% SET	06.19.2026

FIRST LEVEL FLOOR PLAN
A102
 PROJECT NUMBER
 25053

ISSUES / REVISIONS:

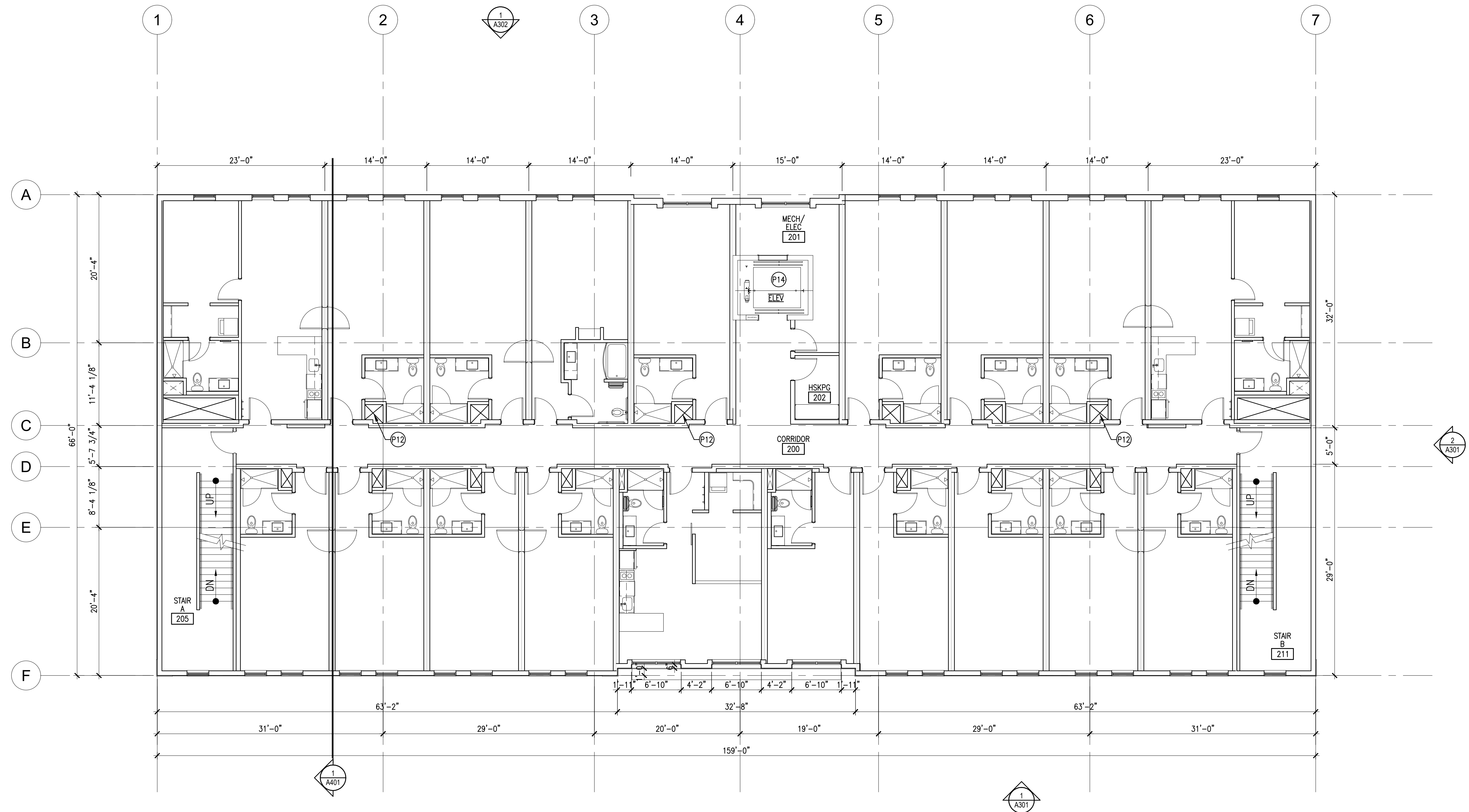
SITE PLAN REVIEW	04.20.2026
HFC REVIEW	05.22.2026
30% SET	06.19.2026

PLAN GENERAL NOTES

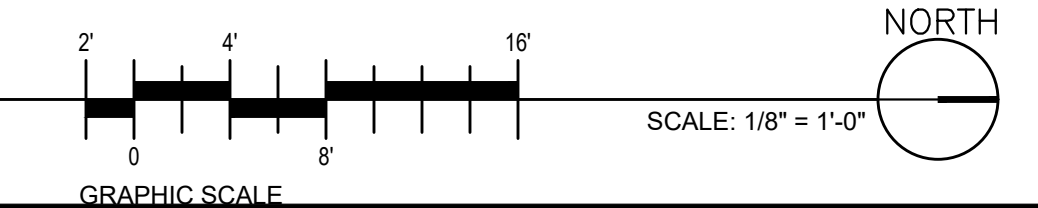
- DIMENSIONS ON EXTERIOR WALLS ARE TO THE INSIDE FACE OF FOUNDATION WALL AND/OR METAL STUD FRAMING
- ALL DOOR FRAMES ARE 4" FROM ADJACENT WALL ON HINGE SIDE, UNO
- VERIFY FINAL LOCATION OF ALL EQUIPMENT PRIOR TO INSTALLATION OF ELECTRICAL, PLUMBING OR MECHANICAL HOOK-UPS.
- ALL WALLS TO ROOF DECK, UNO TO ACCOMMODATE DEFLECTION OF THE ROOF AND FLOOR STRUCTURE, ASSEMBLY TO BE UL LISTED
- PROVIDE CONTROL JOINTS IN GYP BD WALLS AS RECOMMENDED BY MANUF
- PROVIDE MOISTURE RESISTANT GYP BD ON TOILET ROOM WET WALLS AND ADJACENT TO MOP SINK
- PROVIDE 4'x8' FIRE RATED TREATED PLYWOOD ON WALL IN ELEC ROOM FOR TELEPHONE DEMARCATION POINT
- NO COMBUSTIBLE MATERIALS ALLOWED IN PLENUM SPACE
- SEAL ALL OPENINGS OR PENETRATIONS IN THE TENANT DEMISING WALLS, AND OPEN AREAS AT THE ROOF DECK WALL INTERSECTION, TO PREVENT ODOR OR SOUND FROM BEING TRANSMITTED THROUGH OPENINGS INTO ADJACENT TENANT SPACES. MAINTAIN FIRE RATING AT ALL RATED WALLS/FLOORS
- PROVIDE DIRECTIONAL EXIT SIGNS PER CODE (SECTION 1013.1), SEE ELEC PLANS
- SEE CIVIL PLANS FOR SLAB ELEVATIONS
- SEE STRUCTURAL PLANS FOR COLUMN/BEAM LOCATIONS
- PROVIDE AND POST "OCCUPANCY LOAD X" SIGN IN ALL ASSEMBLY OCCUPANCIES, IBC SECTION 1004.3, SEE SHEET A009

PLAN KEYNOTES

- NOTE: NOT ALL NOTES ARE USED ON EACH SHEET
- (P1) PROVIDE SEMI-RECESSED FIRE CABINET W/ PORTABLE FIRE EXTINGUISHER, PER IBC 906, SEE DETAIL 1/A1001.
 - (P2) PROVIDE RECESSED FIRE DEPARTMENT KEY BOX, COORDINATE LOCATION W/ FIRE MARSHAL
 - (P3) PROVIDE SEMI-RECESSED FIRE ANNUNCIATOR PANEL
 - (P4) PROVIDE CONCRETE PATIO SYSTEM, SEE CIVIL PLANS
 - (P5) PROVIDE STRUC STOOP AT DOOR, W/ 18" MIN CONC ON PULL/LATCH SIDE OF DOOR (STOOP HIGH POINT TO BE 1/4" BELOW T.O.S. ELEV SLOPE CONC AWAY FROM DOOR 1/4" PER FT), SEE STRUC PLANS FOR SIZE AND COORD W/ CIVIL PLANS
 - (P6) PROVIDE ELECTRICAL PANELS, SEE ELEC PLANS
 - (P7) NOT USED
 - (P8) PROVIDE HOSE BIB, SEE PLUMBING PLANS
 - (P9) PROVIDE ELECTRIC WATER COOLER/ BOTTLE FILLER COMBO, SEE PLUMBING PLANS
 - (P10) PROVIDE MOP SINK, SEE PLUMBING PLANS
 - (P11) PROVIDE FLOOR DRAIN, SEE DETAIL 15/A1001. SEE PLUMBING PLANS
 - (P12) PROVIDE RAIN LEADER, SEE PLUMBING AND CIVIL PLANS
 - (P13) PROVIDE RECYCLING AREA, PER SPS 362
 - (P14) PROVIDE MACHINE ROOM-LESS TRACTION ELEVATOR (3,500 LBS), COORDINATE SHAFT SIZES, PIT DEPTH AND OVERRUN DISTANCE W/ ELEVATOR SUPPLIER
 - (P15) PROVIDE EXIT DISCHARGE BARRIER (GATE), PER IBC SECTION 1023.8, SEE DETAIL 14/A1001
 - (P16) PROVIDE SHIPS LADDER FOR ROOF ACCESS
 - (P17) PROVIDE RETAINING WALL W/ GUARDRAIL SYSTEM, SEE CIVIL
 - (P18) NOT USED
 - (P19) NOT USED
 - (P20) WRAP STRUCT COLUMN AND/OR ROOF DRAIN AS TIGHT AS POSSIBLE W/ MTL FRAMING AND 5/8" GYP BD
 - (P21) LINE OF CANOPY ABOVE
 - (P22) PROVIDE DOUBLE SIDED GAS FIREPLACE



1 SECOND LEVEL FLOOR PLAN
 A103



ISSUES / REVISIONS:

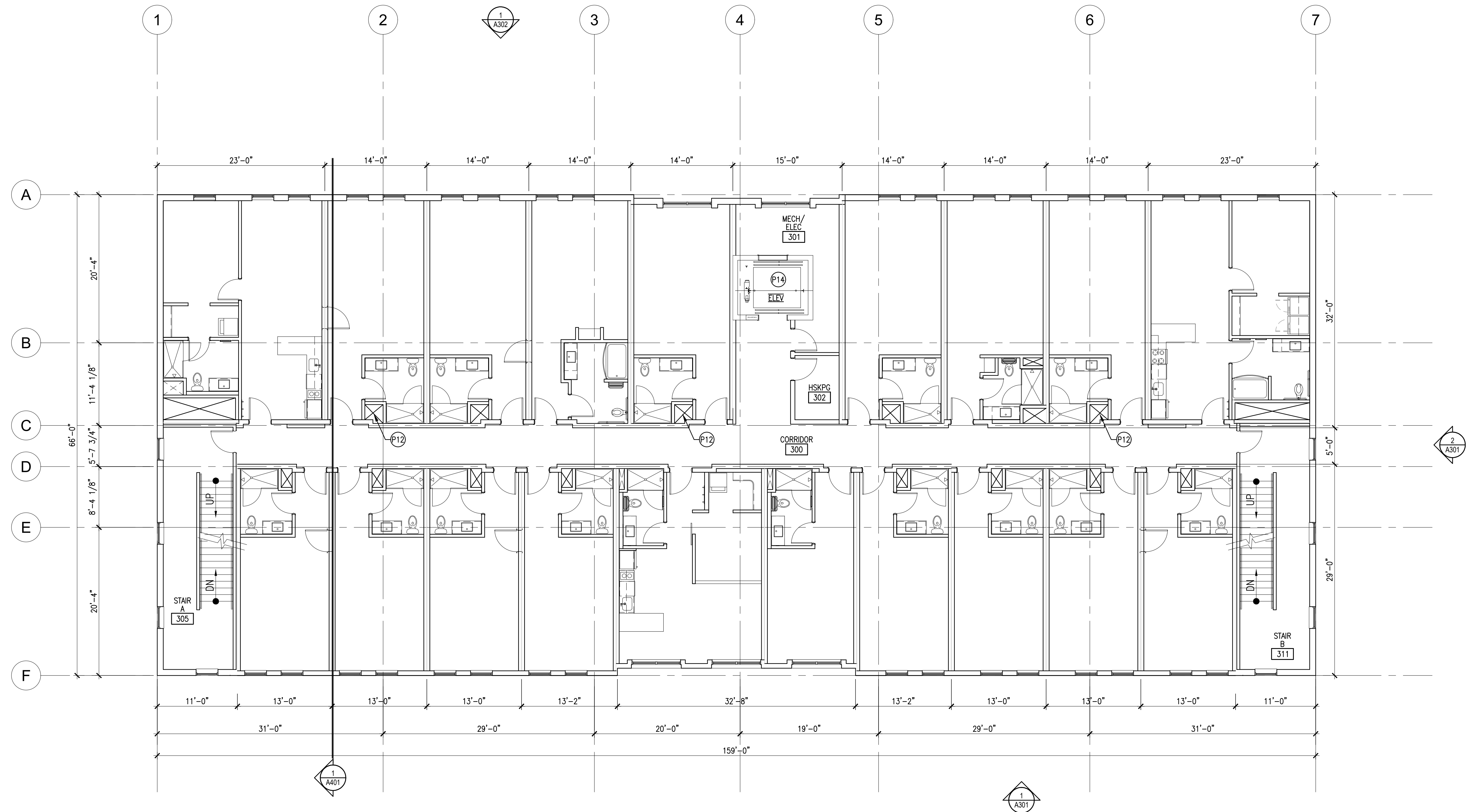
SITE PLAN REVIEW	04.20.2026
HFC REVIEW	05.22.2026
30% SET	06.19.2026

PLAN GENERAL NOTES

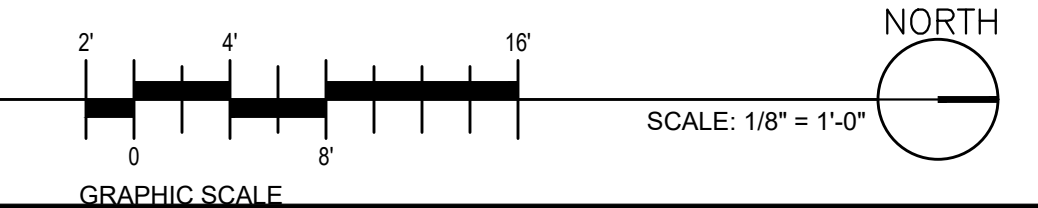
- DIMENSIONS ON EXTERIOR WALLS ARE TO THE INSIDE FACE OF FOUNDATION WALL AND/OR METAL STUD FRAMING
- ALL DOOR FRAMES ARE 4" FROM ADJACENT WALL ON HINGE SIDE, UNO
- VERIFY FINAL LOCATION OF ALL EQUIPMENT PRIOR TO INSTALLATION OF ELECTRICAL, PLUMBING OR MECHANICAL HOOK-UPS.
- ALL WALLS TO ROOF DECK, UNO TO ACCOMMODATE DEFLECTION OF THE ROOF AND FLOOR STRUCTURE, ASSEMBLY TO BE UL LISTED
- PROVIDE CONTROL JOINTS IN GYP BD WALLS AS RECOMMENDED BY MANUF
- PROVIDE MOISTURE RESISTANT GYP BD ON TOILET ROOM WET WALLS AND ADJACENT TO MOP SINK
- PROVIDE 4'x8' FIRE RATED TREATED PLYWOOD ON WALL IN ELEC ROOM FOR TELEPHONE DEMARCATION POINT
- NO COMBUSTIBLE MATERIALS ALLOWED IN PLENUM SPACE
- SEAL ALL OPENINGS OR PENETRATIONS IN THE TENANT DEMISING WALLS, AND OPEN AREAS AT THE ROOF DECK WALL INTERSECTION, TO PREVENT ODOR OR SOUND FROM BEING TRANSMITTED THROUGH OPENINGS INTO ADJACENT TENANT SPACES. MAINTAIN FIRE RATING AT ALL RATED WALLS/FLOORS
- PROVIDE DIRECTIONAL EXIT SIGNS PER CODE (SECTION 1013.1), SEE ELEC PLANS
- SEE CIVIL PLANS FOR SLAB ELEVATIONS
- SEE STRUCTURAL PLANS FOR COLUMN/BEAM LOCATIONS
- PROVIDE AND POST "OCCUPANCY LOAD X" SIGN IN ALL ASSEMBLY OCCUPANCIES, IBC SECTION 1004.3, SEE SHEET A009

PLAN KEYNOTES

- NOTE: NOT ALL NOTES ARE USED ON EACH SHEET
- (P1) PROVIDE SEMI-RECESSED FIRE CABINET W/ PORTABLE FIRE EXTINGUISHER, PER IBC 906, SEE DETAIL 1/A1001.
 - (P2) PROVIDE RECESSED FIRE DEPARTMENT KEY BOX, COORDINATE LOCATION W/ FIRE MARSHAL
 - (P3) PROVIDE SEMI-RECESSED FIRE ANNUNCIATOR PANEL
 - (P4) PROVIDE CONCRETE PATIO SYSTEM, SEE CIVIL PLANS
 - (P5) PROVIDE STRUC STOOP AT DOOR, W/ 18" MIN CONC ON PULL/LATCH SIDE OF DOOR (STOOP HIGH POINT TO BE 1/4" BELOW T.O.S. ELEV SLOPE CONC AWAY FROM DOOR 1/4" PER FT), SEE STRUC PLANS FOR SIZE AND COORD W/ CIVIL PLANS
 - (P6) PROVIDE ELECTRICAL PANELS, SEE ELEC PLANS
 - (P7) NOT USED
 - (P8) PROVIDE HOSE BIB, SEE PLUMBING PLANS
 - (P9) PROVIDE ELECTRIC WATER COOLER/ BOTTLE FILLER COMBO, SEE PLUMBING PLANS
 - (P10) PROVIDE MOP SINK, SEE PLUMBING PLANS
 - (P11) PROVIDE FLOOR DRAIN, SEE DETAIL 15/A1001. SEE PLUMBING PLANS
 - (P12) PROVIDE RAIN LEADER, SEE PLUMBING AND CIVIL PLANS
 - (P13) PROVIDE RECYCLING AREA, PER SPS 362
 - (P14) PROVIDE MACHINE ROOM-LESS TRACTION ELEVATOR (3,500 LBS), COORDINATE SHAFT SIZES, PIT DEPTH AND OVERRUN DISTANCE W/ ELEVATOR SUPPLIER
 - (P15) PROVIDE EXIT DISCHARGE BARRIER (GATE), PER IBC SECTION 1023.8, SEE DETAIL 14/A1001
 - (P16) PROVIDE SHIPS LADDER FOR ROOF ACCESS
 - (P17) PROVIDE RETAINING WALL W/ GUARDRAIL SYSTEM, SEE CIVIL
 - (P18) NOT USED
 - (P19) NOT USED
 - (P20) WRAP STRUCT COLUMN AND/OR ROOF DRAIN AS TIGHT AS POSSIBLE W/ MTL FRAMING AND 5/8" GYP BD
 - (P21) LINE OF CANOPY ABOVE
 - (P22) PROVIDE DOUBLE SIDED GAS FIREPLACE



1 THIRD LEVEL FLOOR PLAN
 A104



ISSUES / REVISIONS:

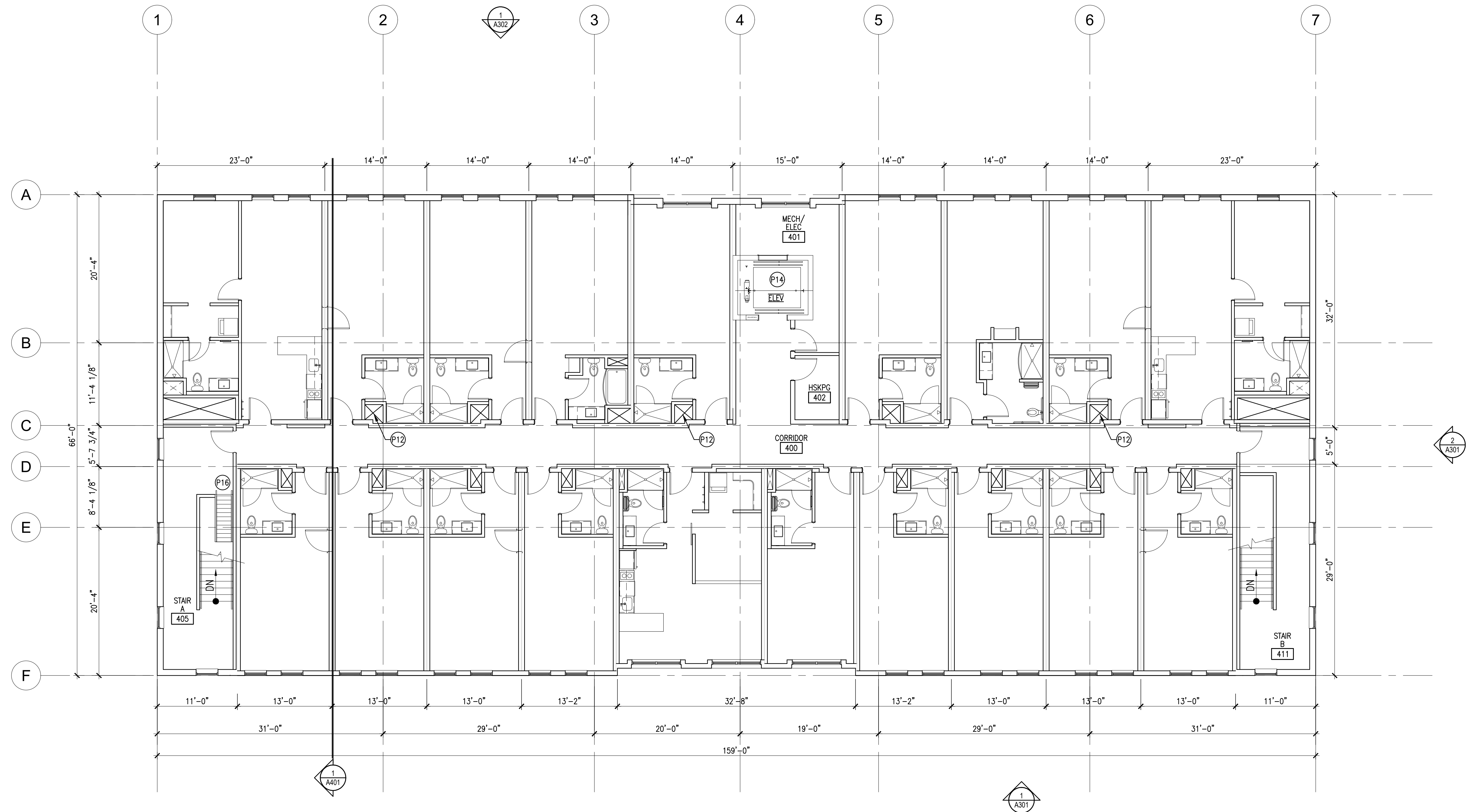
SITE PLAN REVIEW	04.20.2026
HFC REVIEW	05.22.2026
30% SET	06.19.2026

PLAN GENERAL NOTES

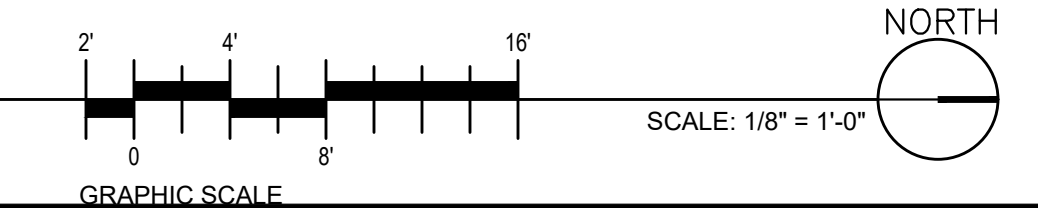
- DIMENSIONS ON EXTERIOR WALLS ARE TO THE INSIDE FACE OF FOUNDATION WALL AND/OR METAL STUD FRAMING
- ALL DOOR FRAMES ARE 4" FROM ADJACENT WALL ON HINGE SIDE, UNO
- VERIFY FINAL LOCATION OF ALL EQUIPMENT PRIOR TO INSTALLATION OF ELECTRICAL, PLUMBING OR MECHANICAL HOOK-UPS.
- ALL WALLS TO ROOF DECK, UNO TO ACCOMMODATE DEFLECTION OF THE ROOF AND FLOOR STRUCTURE, ASSEMBLY TO BE UL LISTED
- PROVIDE CONTROL JOINTS IN GYP BD WALLS AS RECOMMENDED BY MANUF
- PROVIDE MOISTURE RESISTANT GYP BD ON TOILET ROOM WET WALLS AND ADJACENT TO MOP SINK
- PROVIDE 4'x8' FIRE RATED TREATED PLYWOOD ON WALL IN ELEC ROOM FOR TELEPHONE DEMARCATION POINT
- NO COMBUSTIBLE MATERIALS ALLOWED IN PLENUM SPACE
- SEAL ALL OPENINGS OR PENETRATIONS IN THE TENANT DEMISING WALLS, AND OPEN AREAS AT THE ROOF DECK WALL INTERSECTION, TO PREVENT ODOR OR SOUND FROM BEING TRANSMITTED THROUGH OPENINGS INTO ADJACENT TENANT SPACES. MAINTAIN FIRE RATING AT ALL RATED WALLS/FLOORS
- PROVIDE DIRECTIONAL EXIT SIGNS PER CODE (SECTION 1013.1), SEE ELEC PLANS
- SEE CIVIL PLANS FOR SLAB ELEVATIONS
- SEE STRUCTURAL PLANS FOR COLUMN/BEAM LOCATIONS
- PROVIDE AND POST "OCCUPANCY LOAD X" SIGN IN ALL ASSEMBLY OCCUPANCIES, IBC SECTION 1004.3, SEE SHEET A009

PLAN KEYNOTES

- NOTE: NOT ALL NOTES ARE USED ON EACH SHEET
- (P1) PROVIDE SEMI-RECESSED FIRE CABINET W/ PORTABLE FIRE EXTINGUISHER, PER IBC 906, SEE DETAIL 1/A1001.
 - (P2) PROVIDE RECESSED FIRE DEPARTMENT KEY BOX, COORDINATE LOCATION W/ FIRE MARSHAL
 - (P3) PROVIDE SEMI-RECESSED FIRE ANNUNCIATOR PANEL
 - (P4) PROVIDE CONCRETE PATIO SYSTEM, SEE CIVIL PLANS
 - (P5) PROVIDE STRUC STOOP AT DOOR, W/ 18" MIN CONC ON PULL/LATCH SIDE OF DOOR (STOOP HIGH POINT TO BE 1/4" BELOW T.O.S. ELEV SLOPE CONC AWAY FROM DOOR 1/4" PER FT), SEE STRUC PLANS FOR SIZE AND COORD W/ CIVIL PLANS
 - (P6) PROVIDE ELECTRICAL PANELS, SEE ELEC PLANS
 - (P7) NOT USED
 - (P8) PROVIDE HOSE BIB, SEE PLUMBING PLANS
 - (P9) PROVIDE ELECTRIC WATER COOLER/ BOTTLE FILLER COMBO, SEE PLUMBING PLANS
 - (P10) PROVIDE MOP SINK, SEE PLUMBING PLANS
 - (P11) PROVIDE FLOOR DRAIN, SEE DETAIL 15/A1001. SEE PLUMBING PLANS
 - (P12) PROVIDE RAIN LEADER, SEE PLUMBING AND CIVIL PLANS
 - (P13) PROVIDE RECYCLING AREA, PER SPS 362
 - (P14) PROVIDE MACHINE ROOM-LESS TRACTION ELEVATOR (3,500 LBS), COORDINATE SHAFT SIZES, PIT DEPTH AND OVERRUN DISTANCE W/ ELEVATOR SUPPLIER
 - (P15) PROVIDE EXIT DISCHARGE BARRIER (GATE), PER IBC SECTION 1023.8, SEE DETAIL 14/A1001
 - (P16) PROVIDE SHIPS LADDER FOR ROOF ACCESS
 - (P17) PROVIDE RETAINING WALL W/ GUARDRAIL SYSTEM, SEE CIVIL
 - (P18) NOT USED
 - (P19) NOT USED
 - (P20) WRAP STRUCT COLUMN AND/OR ROOF DRAIN AS TIGHT AS POSSIBLE W/ MTL FRAMING AND 5/8" GYP BD
 - (P21) LINE OF CANOPY ABOVE
 - (P22) PROVIDE DOUBLE SIDED GAS FIREPLACE



1 FOURTH LEVEL FLOOR PLAN
 A105



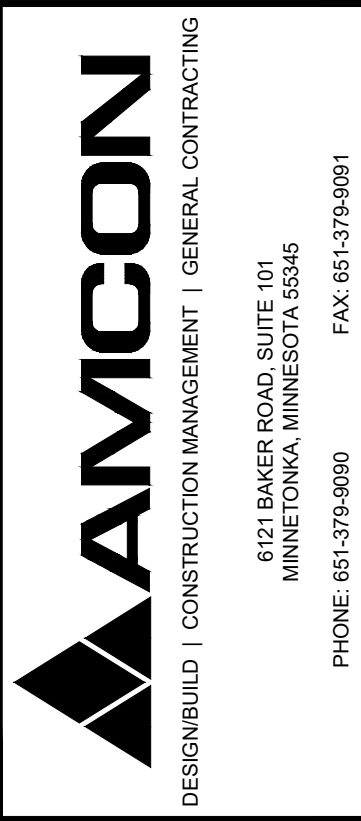
W:\25053_Archer House - Northfield\Drawings\A105 - Floor Plans.dwg | 05/13/2026 11:52 PM (Owner: JEM) | By: JAMES MCKINNON

ROOF GENERAL NOTES

- COORDINATE ALL MECHANICAL, ELECTRICAL, AND PLUMBING PENETRATIONS W/ MECHANICAL, ELECTRICAL, AND PLUMBING PLANS
- BALLASTED, 60 MIL SINGLE-PLY EPDM ROOF SYSTEM, UNO
- SEE BUILDING SECTIONS AND STRUCTURAL FOR ROOF TRUSSES

ROOF KEY NOTES

- (R1) 30" X 54" ROOF SCUTTLE WITH INTEGRAL GUARD RAIL, PROVIDE TAPERED INSULATION AS REQUIRED, SEE DETAIL 3/AB05
- (R2) CONNECT ROOF DRAIN TO STORM SEWER, SEE CIVIL PLANS AND DETAIL 1/AB05
- (R3) PROVIDE OVERFLOW ROOF DRAIN 2" ABOVE ROOF DRAIN, DISCHARGE LOW W/ BRASS LAMB'S TONGUE. COORDINATE LOCATIONS W/ AMCON, SEE DETAIL 1/AB05
- (R4) LOCATION OF ELEVATOR DOG HOUSE
- (R5) PROVIDE TAPERED ROOF INSULATION. SLOPE 1/4" MIN PER FOOT TO ROOF DRAINS
- (R6) PROVIDE WINDOW WASHING TIE-OFFS (PER IBC 3114), SEE DETAIL 2/AB05
- (R7) ROOFTOP UNIT, PROVIDE TAPERED INSULATION AS REQUIRED, SEE DETAIL 3/AB05 AND MECHANICAL PLANS
- (R8) PROVIDE ROOFING MEMBRANE PATH FROM ROOF ACCESS HATCHES TO ALL RTU'S AND 36" AROUND PERIMETER OF EACH RTU AND ALONG HATCH OPENING SIDE. NO CONCRETE PAVERS
- (R9) MECHANICAL SCREENING

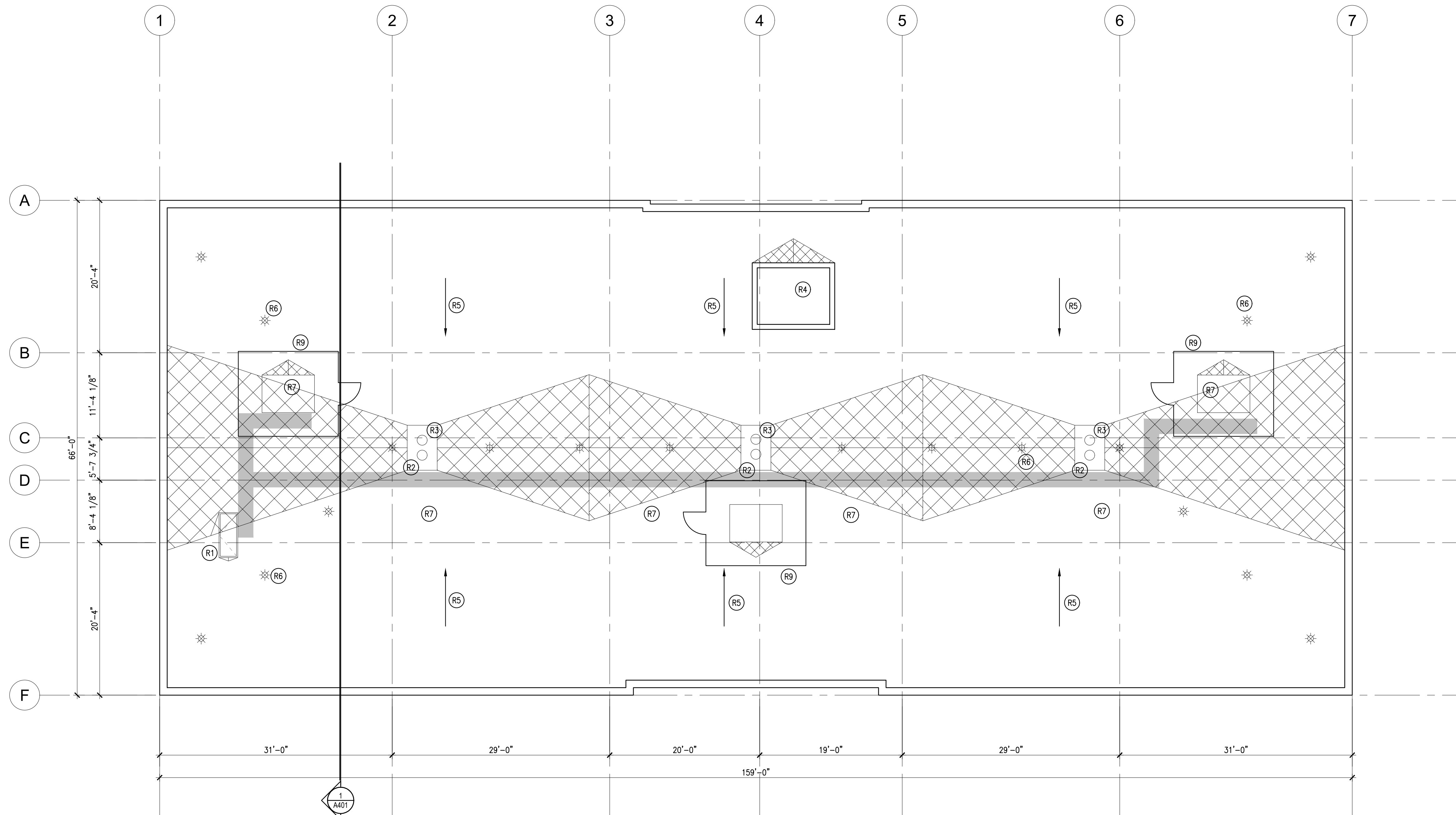


© 2026 AMCON CONST. CO. All rights reserved. THE DRAWING IS AN INSTRUMENT OF SERVICE AND IS THE PROPERTY OF AMCON CONST. CO. IT MAY NOT BE REPRODUCED OR TRANSMITTED IN ANY FORM OR BY ANY MEANS, WITHOUT THE WRITTEN PERMISSION OF AMCON CONST. CO. DRAWN BY: JEM

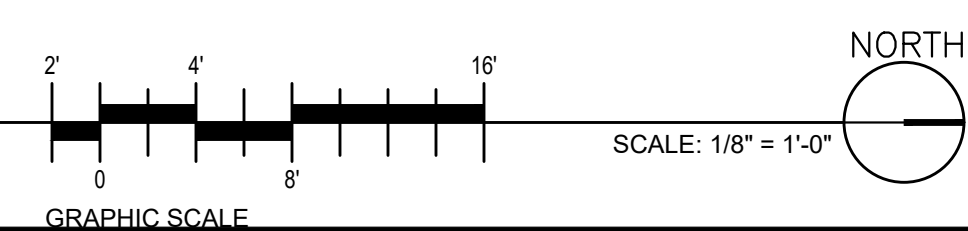
PROPOSED NEW BUILDING FOR:
THE ARCHER HOUSE
 212 DIVISION STREET S, NORTHFIELD, MINNESOTA

ISSUES / REVISIONS:	
SITE PLAN REVIEW	04.20.2026
HFC REVIEW	05.22.2026
30% SET	06.19.2026

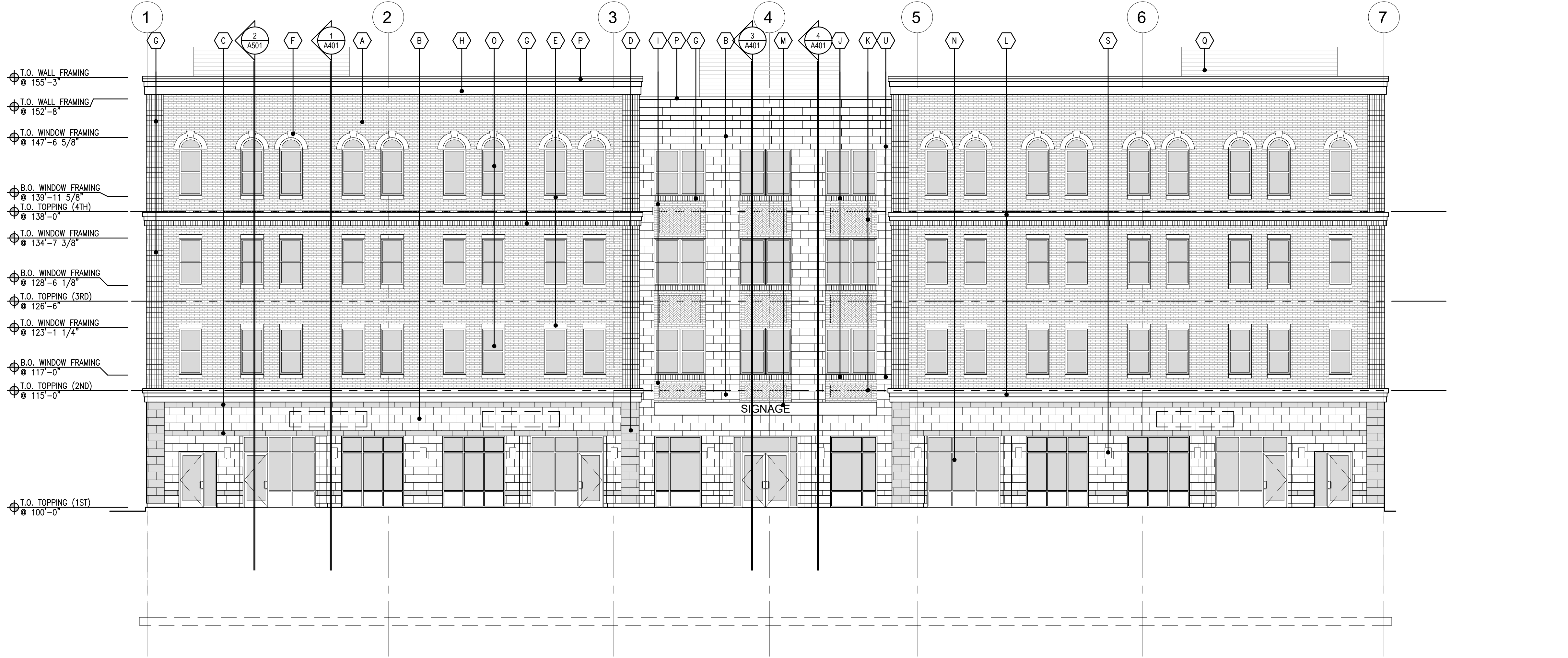
ROOF PLAN
A106
 PROJECT NUMBER
 25053



1 ROOF PLAN
 A106

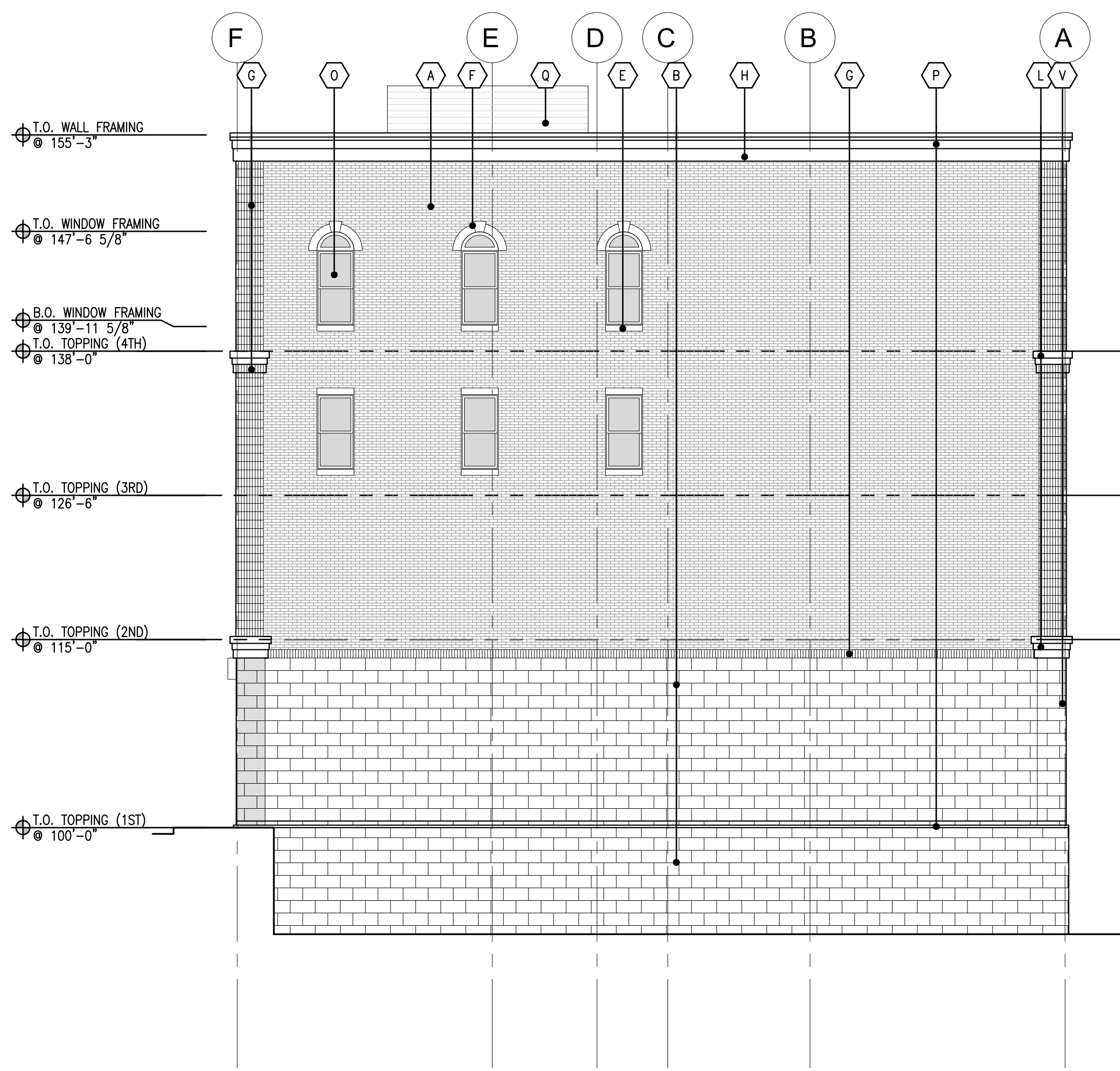


W:\25053 Archer House - Northfield\Drawings\A106 Floor Plans.dwg | 04/13/2026 11:52 PM (Owner: JEM) | By: Jem Mahamoon



1 EAST ELEVATION
A301

SCALE: 1/8" = 1'-0"



2 NORTH ELEVATION
A301

SCALE: 1/8" = 1'-0"

MATERIAL KEYNOTES

- A THIN BRICK #1:
MANUF: ENDICOTT
PRODUCT: THIN BRICK
SIZE: MODULAR X 1/2"
COLOR: RUBY RED BLEND
FINISH: VELOUR
- B CULTURED STONE:
MANUF: ARRISCRAFT
PRODUCT: ARRIS-TILE RENAISSANCE
FINISH: SMOOTH
SIZE: 23 5/8" X 11 5/8" X 3/4"
COLOR: TAN
- C CULTURED STONE BAND:
MANUF: ARRISCRAFT
PRODUCT: ARRIS-TILE RENAISSANCE
FINISH: ROCKED
SIZE: 23 5/8" X 7 5/8" X 3/4"
COLOR: CAFE
- D CULTURED STONE QUOINS:
MANUF: ARRISCRAFT
PRODUCT: ARRIS-TILE RENAISSANCE
FINISH: ROCKED
SIZE: 23 5/8" X 11 5/8" X 3/4"
COLOR: CAFE
- E 6" PRECAST HEAD/SILL:
MANUF: ARRISCRAFT
PRODUCT: ARRIS-CAST
FINISH: SMOOTH
SIZE: 36" X 6" X 3/4"
COLOR: TAN
- F ARCHED EYEBROW W/ KEYSTONE:
MANUF: ARRISCRAFT
PRODUCT: ARRIS-CAST
FINISH: SMOOTH
COLOR: TAN
PROFILE: CUSTOM
- G THIN BRICK #1 SOLDIER COURSE:
MANUF: ENDICOTT
PRODUCT: THIN BRICK
SIZE: MODULAR X 1"
COLOR: RUBY RED BLEND
FINISH: VELOUR
- H PRECAST CORNICE:
MANUF: ARRISCRAFT
PRODUCT: ARRIS-CAST
COLOR: TAN
FINISH: SMOOTH
PROFILE: CUSTOM
- I THIN BRICK #2:
MANUF: ENDICOTT
PRODUCT: THIN BRICK
SIZE: MODULAR X 1"
COLOR: LIGHT SANDSTONE
FINISH: SMOOTH
- J THIN BRICK #2 SOLDIER COURSE:
MANUF: ENDICOTT
PRODUCT: THIN BRICK
SIZE: MODULAR X 1"
COLOR: LIGHT SANDSTONE
FINISH: SMOOTH
- K THIN BRICK #2 HERRINGBONE:
MANUF: ENDICOTT
PRODUCT: THIN BRICK
SIZE: MODULAR X 1/2"
COLOR: LIGHT SANDSTONE
FINISH: SMOOTH
- L PRECAST STONE BAND:
MANUF: ARRISCRAFT
PRODUCT: ARRIS-CAST
COLOR: TAN
FINISH: SMOOTH
PROFILE: CUSTOM
- M ALUMINIUM COMPOSITE MATERIAL EYEBROW:
MANUF: ARCONIC
PRODUCT: REYNOBOND
COLOR: DEEP BLACK
- N ALUMINIUM STOREFRONT SYSTEM:
MANUF: OLDCASTLE (OR EQUAL)
PRODUCT: SERIES 3000XT
COLOR: BLACK
- O SINGLE HUNG WINDOW:
MANUF: ANDERSEN
PRODUCT: 100 SERIES
COLOR: BLACK
- P PREFINISHED METAL CAP/SILL FLASHING:
MANUF: CMG (OR EQUAL)
COLOR: SANDSTONE
- Q MECHANICAL SCREEN:
MANUF: ENVISOR (OR EQUAL)
PRODUCT: HORIZONTAL RIB
COLOR: PUTTY (MATTE FINISH)
- R INSULATED OVERHEAD GARAGE DOOR:
MANUF: MIDLAND (OR EQUAL)
COLOR: BLACK
- S WALL SCOURCE:
MANUF: TBD
COLOR: BLACK
- T COMPOSITE DECK SYSTEM W/ METAL RAILING:
RAILING: BLACK
SUBSTRUCTURE: BROWN TREATED
DECKING: TREX (OR EQUAL)
- U CULTURED STONE BAND:
MANUF: ARRISCRAFT
PRODUCT: ARRIS-TILE RENAISSANCE
FINISH: ROCKED
SIZE: 23 5/8" X 7 5/8" X 3/4"
COLOR: TAN
- V CULTURED STONE QUOINS:
MANUF: ARRISCRAFT
PRODUCT: ARRIS-TILE RENAISSANCE
FINISH: ROCKED
SIZE: 23 5/8" X 11 5/8" X 3/4"
COLOR: TAN
- W DECORATIVE FENCE:
MANUF: AMERISTAR
PRODUCT: MONTAGE PLUS
COLOR: BLACK
- X CAST STONE WALL CAP:
MANUF: ARRISCRAFT
PRODUCT: ARRIS-TILE RENAISSANCE
FINISH: SMOOTH
SIZE: CUSTOM
COLOR: TAN



© 2026 AMCON CONST. CO. All rights reserved. THE DRAWING IS AN INSTRUMENT OF SERVICE AND IS THE PROPERTY OF AMCON CONST. CO. AND MAY NOT BE LOANED, REPRODUCED, COPIED, OR OTHERWISE USED WITHOUT WRITTEN PERMISSION FROM AMCON CONST. CO. DRAWN BY: JEM

PROPOSED NEW BUILDING FOR:
THE ARCHER HOUSE
212 DIVISION STREET S, NORTHFIELD, MINNESOTA

ISSUES / REVISIONS:

SITE PLAN REVIEW	04.20.2026
HFC REVIEW	05.22.2026
30% SET	06.19.2026

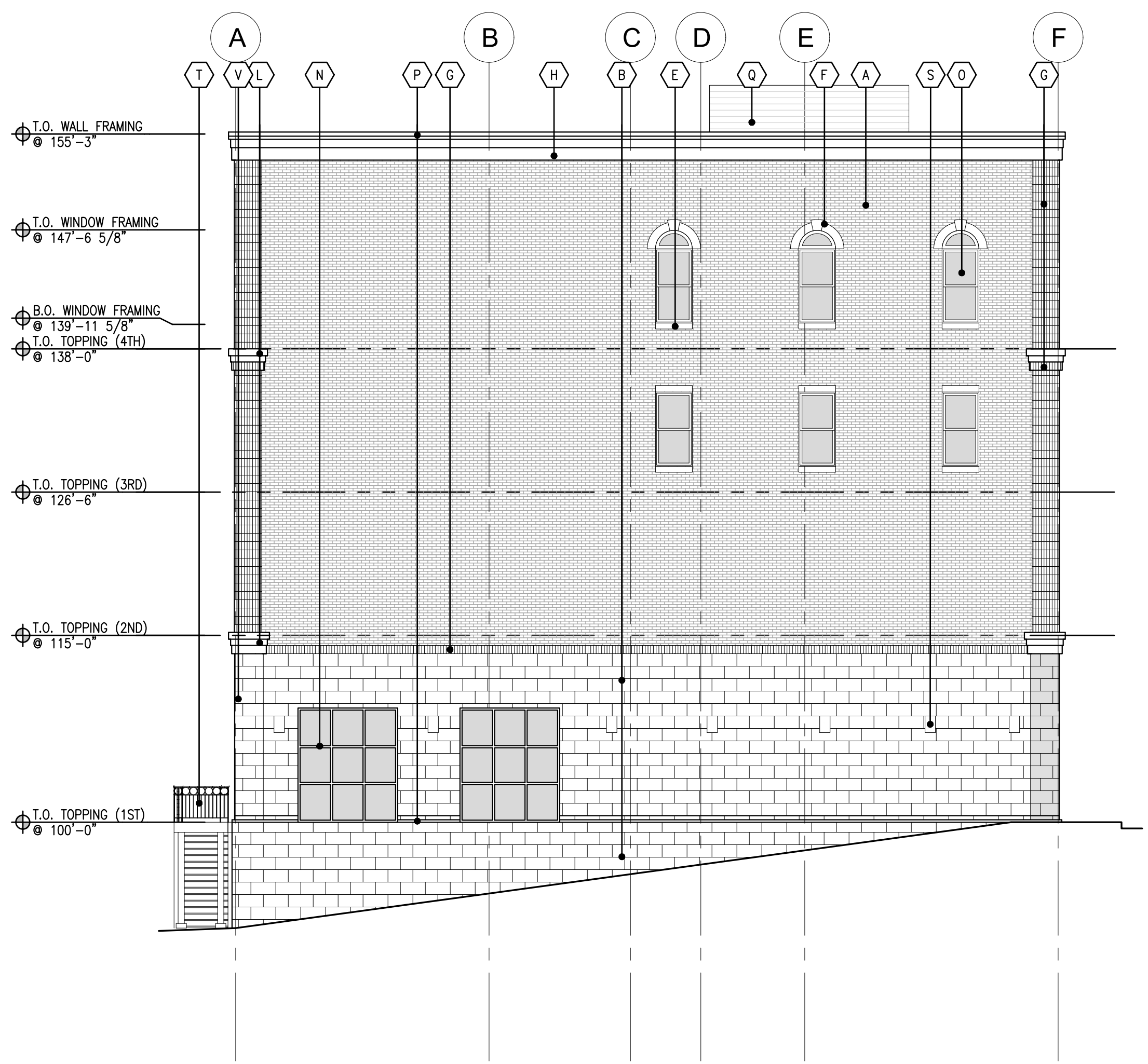
EXTERIOR ELEVATIONS
A301
PROJECT NUMBER
25053

W:\25053 Archer House - Northfield\Drawings\A301 Exterior Elevations.dwg | 15:51:33 06/19/2026 | Rev: 04B, Peteron



1 WEST ELEVATION
A302

SCALE: 1/8" = 1'-0"



2 SOUTH ELEVATION
A302

SCALE: 1/8" = 1'-0"

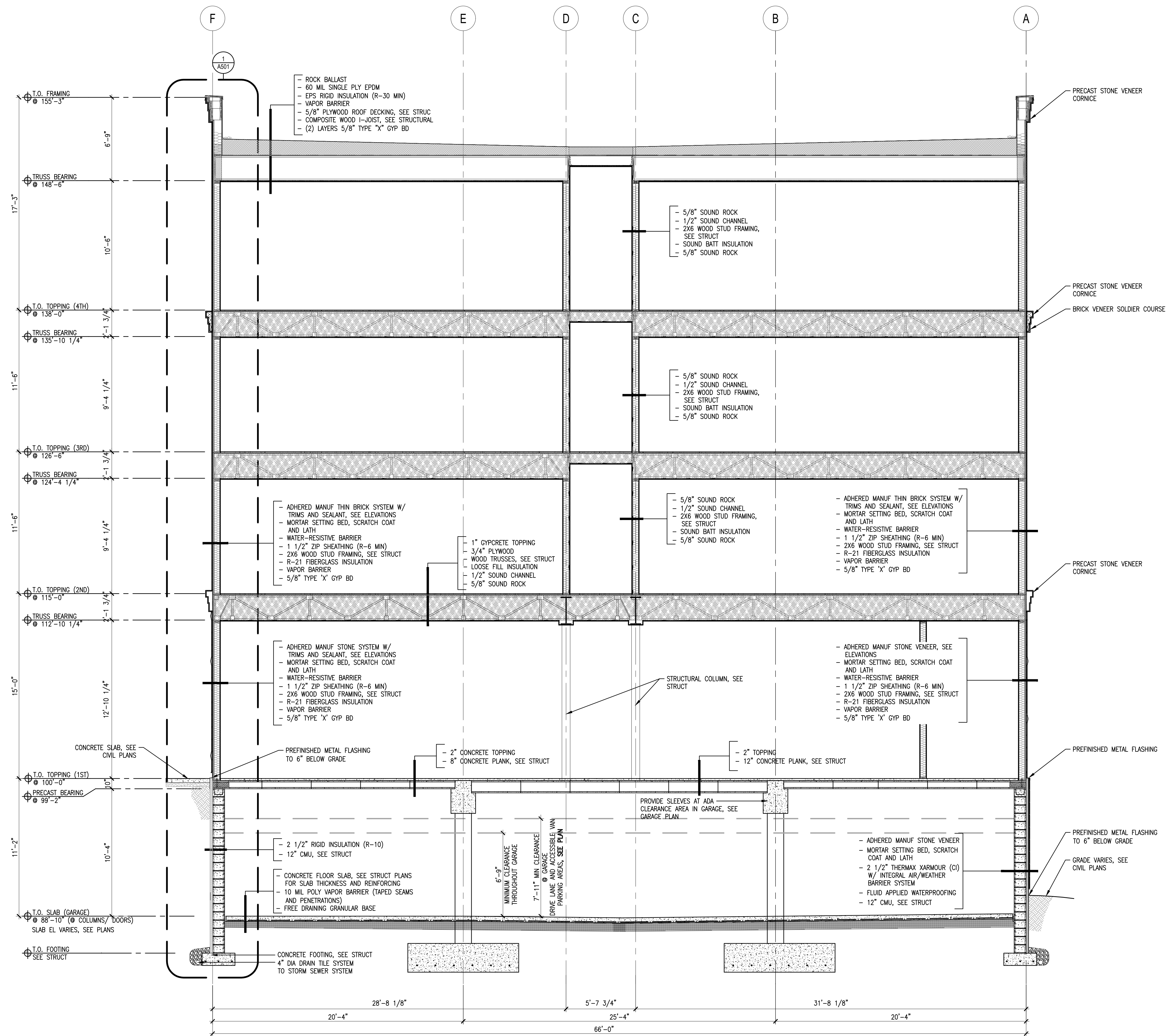
MATERIAL KEYNOTES

- A THIN BRICK #1:
MANUF: ENDICOTT
PRODUCT: THIN BRICK
SIZE: MODULAR X 1/2"
COLOR: RUBY RED BLEND
FINISH: VELOUR
- B CULTURED STONE:
MANUF: ARRISCRAFT
PRODUCT: ARRIS-TILE RENAISSANCE
FINISH: SMOOTH
SIZE: 23 5/8" X 11 5/8" X 3/4"
COLOR: TAN
- C CULTURED STONE BAND:
MANUF: ARRISCRAFT
PRODUCT: ARRIS-TILE RENAISSANCE
FINISH: ROCKED
SIZE: 23 5/8" X 7 5/8" X 3/4"
COLOR: CAFE
- D CULTURED STONE QUOINS:
MANUF: ARRISCRAFT
PRODUCT: ARRIS-TILE RENAISSANCE
FINISH: ROCKED
SIZE: 23 5/8" X 11 5/8" X 3/4"
COLOR: CAFE
- E 6" PRECAST HEAD/SILL:
MANUF: ARRISCRAFT
PRODUCT: ARRIS-CAST
FINISH: SMOOTH
SIZE: 36" X 6" X 3/4"
COLOR: TAN
- F ARCHED EYEBROW W/ KEYSTONE:
MANUF: ARRISCRAFT
PRODUCT: ARRIS-CAST
FINISH: SMOOTH
COLOR: TAN
PROFILE: CUSTOM
- G THIN BRICK #1 SOLDIER COURSE:
MANUF: ENDICOTT
PRODUCT: THIN BRICK
SIZE: MODULAR X 1"
COLOR: RUBY RED BLEND
FINISH: VELOUR
- H PRECAST CORNICE:
MANUF: ARRISCRAFT
PRODUCT: ARRIS-CAST
COLOR: TAN
FINISH: SMOOTH
PROFILE: CUSTOM
- I THIN BRICK #2:
MANUF: ENDICOTT
PRODUCT: THIN BRICK
SIZE: MODULAR X 1"
COLOR: LIGHT SANDSTONE
FINISH: SMOOTH
- J THIN BRICK #2 SOLDIER COURSE:
MANUF: ENDICOTT
PRODUCT: THIN BRICK
SIZE: MODULAR X 1"
COLOR: LIGHT SANDSTONE
FINISH: SMOOTH
- K THIN BRICK #2 HERRINGBONE:
MANUF: ENDICOTT
PRODUCT: THIN BRICK
SIZE: MODULAR X 1/2"
COLOR: LIGHT SANDSTONE
FINISH: SMOOTH
- L PRECAST STONE BAND:
MANUF: ARRISCRAFT
PRODUCT: ARRIS-CAST
COLOR: TAN
FINISH: SMOOTH
PROFILE: CUSTOM
- M ALUMINIUM COMPOSITE MATERIAL EYEBROW:
MANUF: ARCONIC
PRODUCT: REYNOBOND
COLOR: DEEP BLACK
- N ALUMINIUM STOREFRONT SYSTEM:
MANUF: OLDCASTLE (OR EQUAL)
PRODUCT: SERIES 3000XT
COLOR: BLACK
- O SINGLE HUNG WINDOW:
MANUF: ANDERSEN
PRODUCT: 100 SERIES
COLOR: BLACK
- P PREFINISHED METAL CAP/SILL FLASHING:
MANUF: CMG (OR EQUAL)
COLOR: SANDSTONE
- Q MECHANICAL SCREEN:
MANUF: ENVISOR (OR EQUAL)
PRODUCT: HORIZONTAL RIB
COLOR: PUTTY (MATTE FINISH)
- R INSULATED OVERHEAD GARAGE DOOR:
MANUF: MIDLAND (OR EQUAL)
COLOR: BLACK
- S WALL SCONCE:
MANUF: TBD
COLOR: BLACK
- T COMPOSITE DECK SYSTEM W/ METAL RAILING:
RAILING: BLACK
SUBSTRUCTURE: BROWN TREATED
DECKING: TREX (OR EQUAL)
- U CULTURED STONE BAND:
MANUF: ARRISCRAFT
PRODUCT: ARRIS-TILE RENAISSANCE
FINISH: ROCKED
SIZE: 23 5/8" X 7 5/8" X 3/4"
COLOR: TAN
- V CULTURED STONE QUOINS:
MANUF: ARRISCRAFT
PRODUCT: ARRIS-TILE RENAISSANCE
FINISH: ROCKED
SIZE: 23 5/8" X 11 5/8" X 3/4"
COLOR: TAN
- W DECORATIVE FENCE:
MANUF: AMERISTAR
PRODUCT: MONTAGE PLUS
COLOR: BLACK
- X CAST STONE WALL CAP:
MANUF: ARRISCRAFT
PRODUCT: ARRIS-TILE RENAISSANCE
FINISH: SMOOTH
SIZE: CUSTOM
COLOR: TAN

ISSUES / REVISIONS:

SITE PLAN REVIEW	04.20.2025
HFC REVIEW	05.22.2025
30% SET	06.19.2025

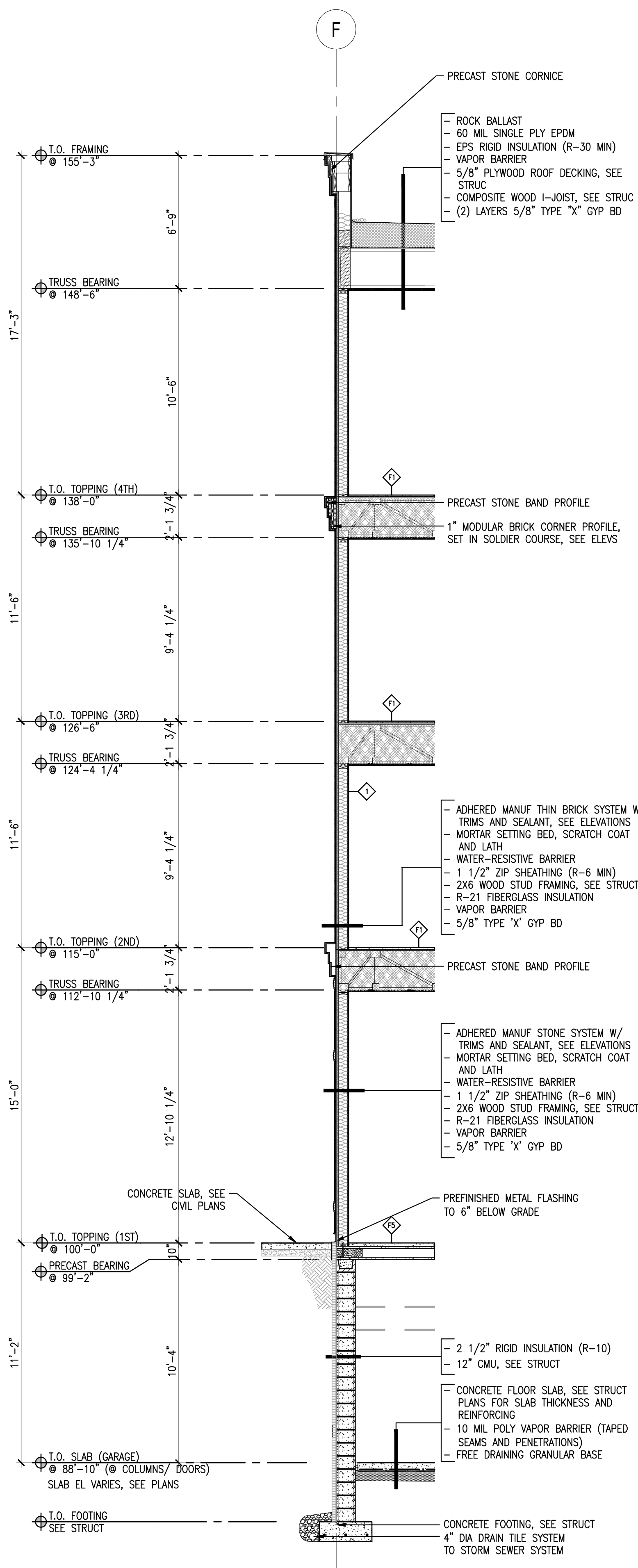
M:\25053_Archer House - Northfield\Drawings\A302 - Exterior Elevations.dwg | 15:11:30 06/19/2025 | Rev: 016 | EIR: Erik Peterson



1 BUILDING SECTION
 A401

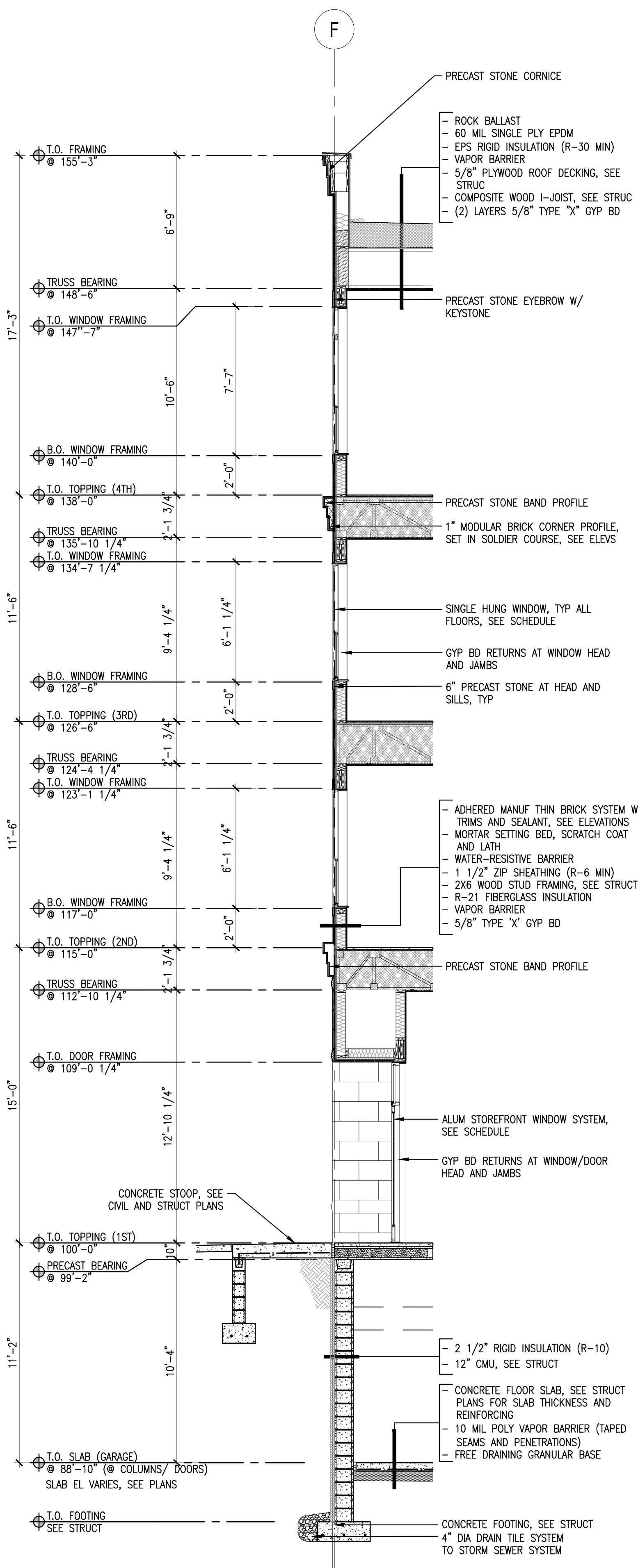
SCALE: 1/4" = 1'-0"

W:\25053 Archer House - Northfield\Drawings\25053_A401_Bldg_Section.dwg | 10/15/2025 1:52:34 PM (Dwgs: User: JEM) | EIR: Jemine Mahamud



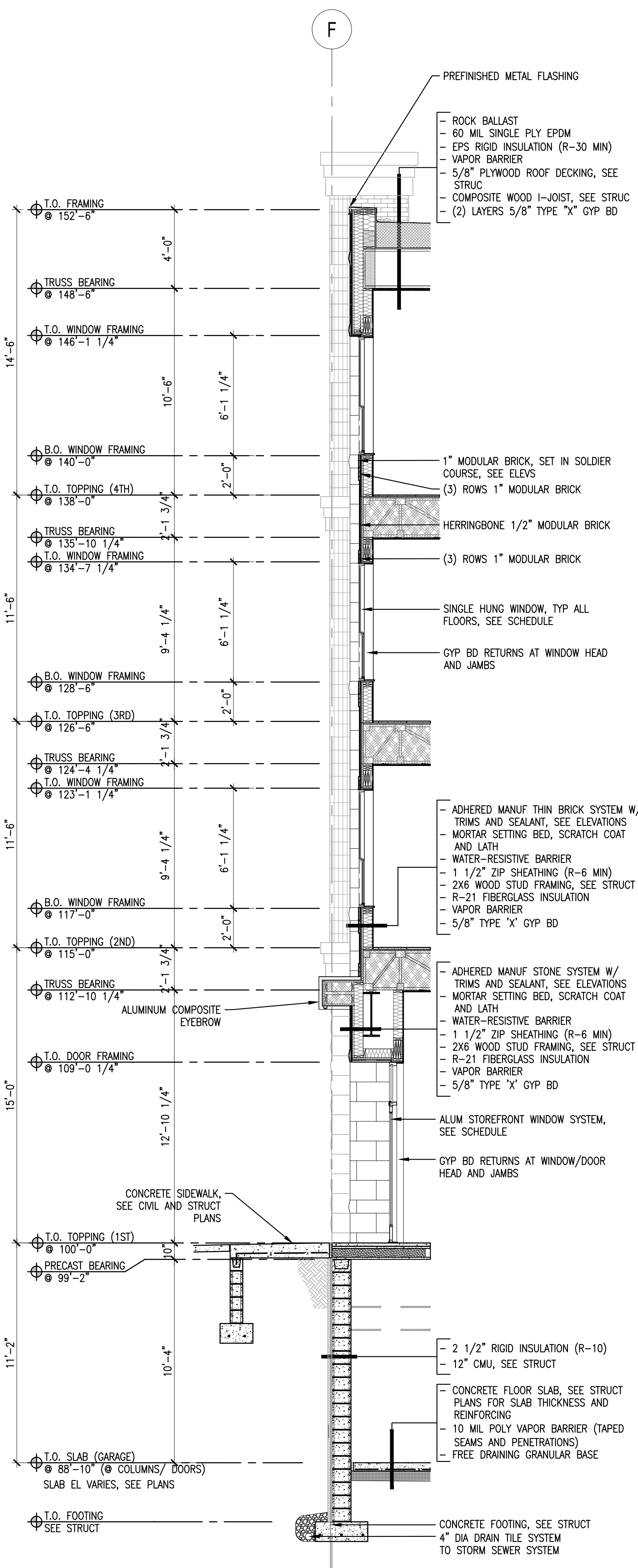
1 WALL SECTION
A501

SCALE: 1/4" = 1'-0"



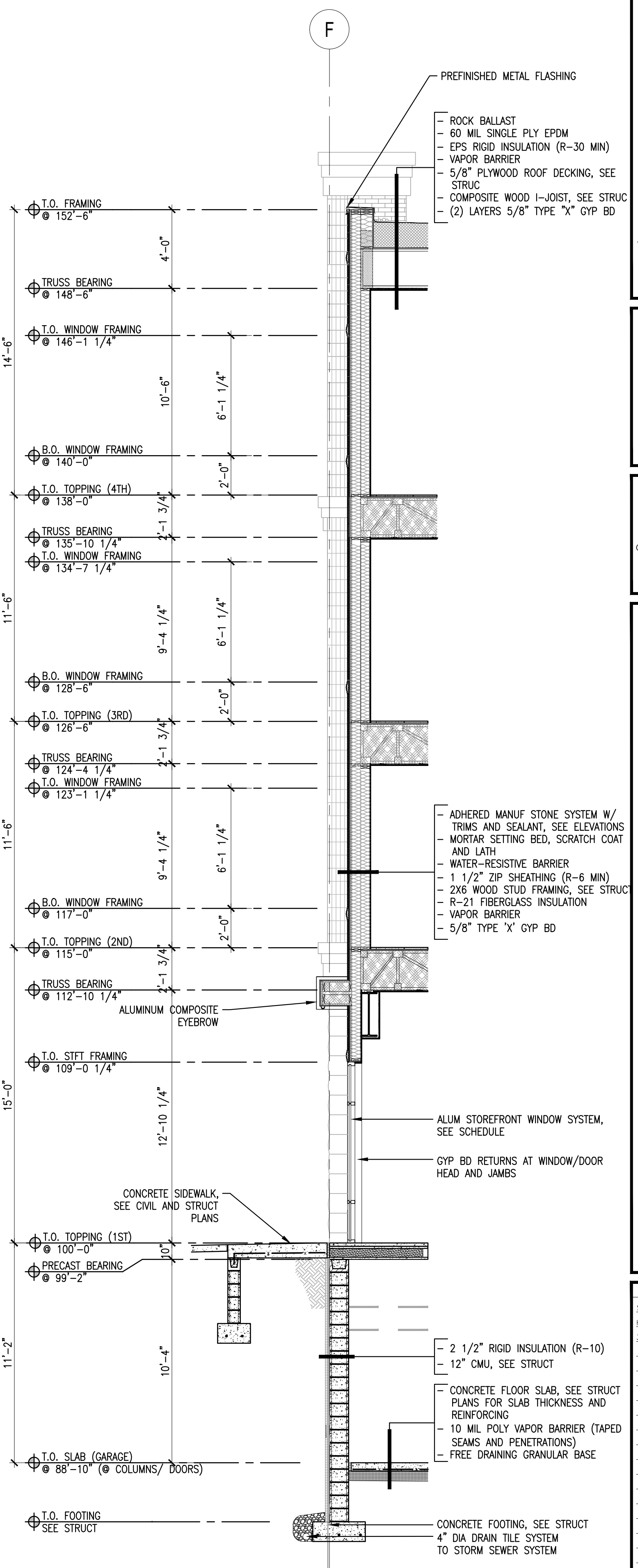
2 WALL SECTION
A501

SCALE: 1/4" = 1'-0"



3 WALL SECTION
A501

SCALE: 1/4" = 1'-0"



4 WALL SECTION
A501

SCALE: 1/4" = 1'-0"

ISSUES / REVISIONS:

SITE PLAN REVIEW	04.20.2026
HFC REVIEW	05.22.2026
30% SET	06.19.2026