

MINNESOTA HISTORY / ARCHITECTURE INVENTORY FORM
NORTHFIELD COMMERCIAL HISTORIC DISTRICT
Rice County, Minnesota

PROPERTY LOCATION	
Property Name: Bushnell Building	Inventory No.: RC-NFC-299
Address: 310 Division Street, Northfield, MN	PIN: 2231350031
QTR/QTR/T/R/S: SW SW Section 31 T112N R19W	
USGS Quad: Northfield, Minnesota	Plat Name: Original Town Block: River Lots Lot 6
UTM Z 15 487256,E 4922658N NAD 83	

PROPERTY INFORMATION	
Construction Date: 1897	Style: Commercial Style
Historic Use: commercial	Current Use: commercial
Property Type: commercial	Historic Context: "Commerce, 1856-1945"
Architect/Builder	Survey Name: Northfield Historic District Survey Revision Project, 2016
Previous NRHP Status: Contributing to Northfield Commercial Historic District	NRHP Recommendation: Contributing to Northfield Commercial Historic District
Form Prepared by: C. Zellie Landscape Research LLC	Survey Date: 3/2016



2016 (right), looking west



1978

Description

This flat-roofed, three-story building is clad in painted brick. It faces east on Division Street, and the rear fronts the Cannon River and Cannon River Commons. It has filled-in window openings at the third level, possibly to accommodate printing plant use. The four-bay facade has a deep corbel course below the simple cornice, a small name plaque, and four rectangular windows with double-hung sash. The storefront below has a modern system that generally replicates traditional design.

History

Built in 1897 by Dwight Bushnell, in 1910 the building housed the implement, harness, and carriage company of Hibbard and Bushnell, with a small blacksmith facility at the edge of the undeveloped parcel. Bushnell (1834-1903) was a native of New York. The Woodmen's Lodge occupied the upper story in the 1890s. The building was next occupied by the Mohn Printing Company, Northfield Independent, College City Press, and Dittman Travel. The 1910 Sanborn map shows a large livery and boarding stable at the rear, one of two on this block. In the 1970s, with the Tosney and McKay Buildings it was combined into one unit by Perman's, a clothing retailer.

MINNESOTA HISTORY / ARCHITECTURE INVENTORY FORM
NORTHFIELD COMMERCIAL HISTORIC DISTRICT
Rice County, Minnesota

Significance and Historic Context(s)

This building is associated with the second period of Northfield's commercial development, from ca. 1880 to 1900, when 29 of the 65 historic district buildings were constructed. It is associated with the Northfield historic context, "Commerce, 1856-1945" (Northfield Preservation Plan, 1992).

Evaluation

This property was listed on the NRHP in 1979 as contributing to the Northfield Commercial Historic District. It retains good historic significance and integrity.

References

Edwins, Steve, ed. *Northfield Downtown Guidebook*. Northfield Heritage Preservation Commission, 1982, 14.

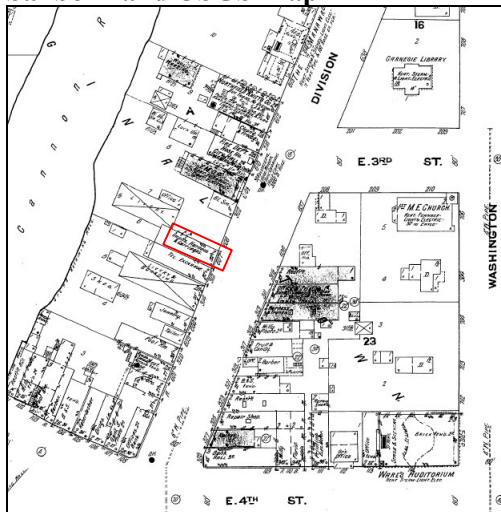
"Northfield Historic District," National Register of Historic Places Nomination, 1979.

Northfield Historical Society. Photograph and research files. Northfield, Minnesota.

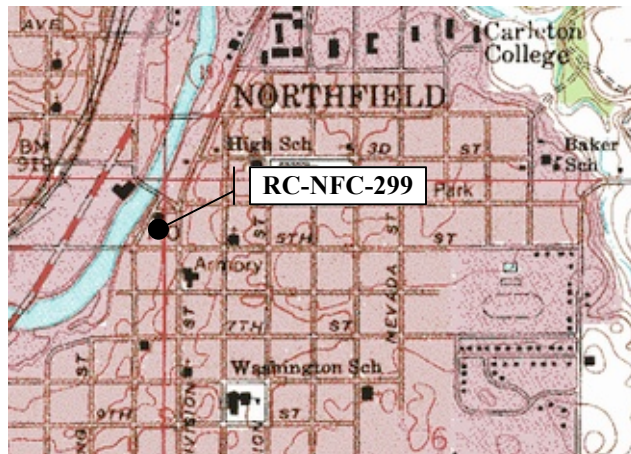
Sanborn Map & Publishing Company, New York. Northfield plates, 1886-1943.

Zellie, Carole. "Northfield Heritage Preservation Plan." Prepared for the Northfield Heritage Preservation Commission, Northfield, Minn. by Landscape Research, 1992.

Sanborn and USGS Map



Sanborn Map and Publishing Co., 1910



USGS: Northfield 1984.