



Northfield Fire Station Expansion Ames Park Gateway Enhancements

City Guiding Documents

- Comprehensive Plan
- City of Northfield Gateway Corridor Improvement Plan (May 2012)
- Downtown Northfield Streetscape Framework Plan (May 2006)

TH3 and 5th Street Gateway

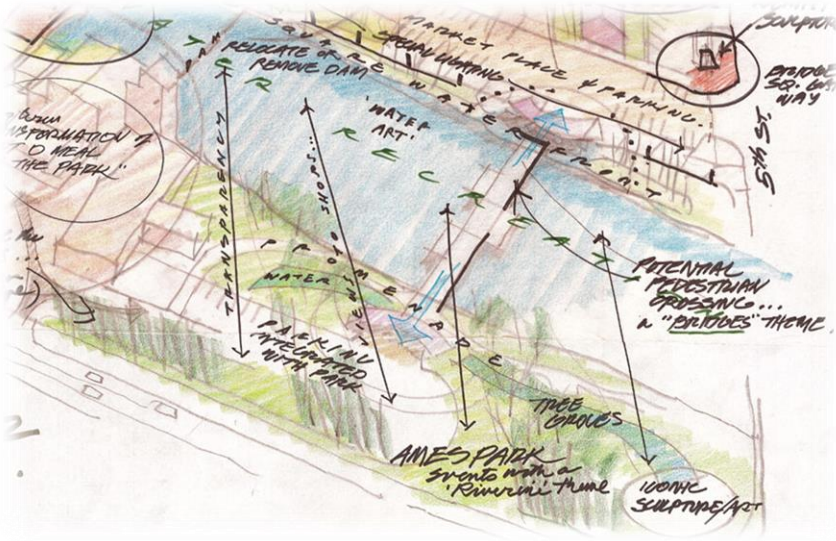


Downtown Northfield Streetscape Framework Plan (May 2006)

- Define as a gateway into the Downtown
- Improve views and connection into the Downtown area

“...has been designed to extend the edge of the Downtown to TH 3”

TH3 and 5th Gateway



Northfield Roundtable Notes from
Worksession February 3, 2012



Downtown Northfield Streetscape Framework Plan (May 2006)

Ames Park Gateway Concept



Potential sites for future PULIC Art ●

#	DESCRIPTION	DATE	BY	APP	REV DATE

NOT FOR CONSTRUCTION

CONSULTANT

Responsive partner. Exceptional outcomes.

PROJECT TITLE
NORTHFIELD FIRE STATION ADDITION

CITY OF NORTHFIELD

SHEET TITLE			
NORTHFIELD, MN AMES PARK GATEWAY			
OWN BY	DATE	APP'D	DATE
MJS			AUG 2017
PROJECT NO.	SHEET NO.	SCALE	REV. NO.
	L-111	AS SHOWN	

Landscape – Planting & Hardscaping

The image displays a landscape plan for a site adjacent to 5th Street W. and Highway No. 3. The plan includes a parking lot, a digital sign, and various plantings. Red arrows connect specific plant and hardscaping photos to their locations on the plan. The plan also identifies existing features like Swamp White Oak and a riverbank.

Limestone Hardscaping

EXISTING SWAMP WHITE OAK

HONEY LOCUST

Digital Sign

Big Bluestem

PINE

5TH STREET W.

EXISTING RIVERBANK (BOYELDER, SILVER BUCKTHORN, ELM, B RIVERBANK GRAPE)

Highway No. 3

Little Bluestem

Sedum Autumn Fire

Orange Coneflower

Prairie Drop seed & Purple Coneflower

Big Bluestem

Landscaping – Ames Park Gateway

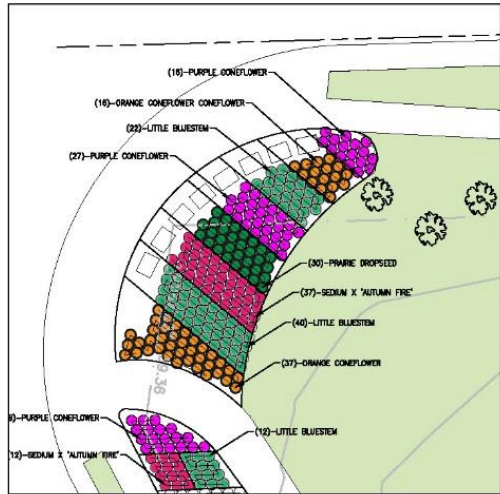
WARNING:

THE CONTRACTOR SHALL BE RESPONSIBLE FOR CALLING FOR LOCATIONS OF ALL EXISTING UTILITIES. THEY SHALL COOPERATE WITH ALL UTILITY COMPANIES IN MAINTAINING THEIR SERVICE AND/OR RELOCATION OF LINES.

THE CONTRACTOR SHALL CONTACT GOPHER STATE ONE CALL AT 851-454-0022 AT LEAST 48 HOURS IN ADVANCE FOR THE LOCATIONS OF ALL UNDERGROUND WIRES, CABLES, CONDUITS, PIPES, MANHOLES, VALVES OR OTHER BURIED STRUCTURES BEFORE DIGGING. THE CONTRACTOR SHALL REPAIR OR REPLACE THE ABOVE WHEN DAMAGED DURING CONSTRUCTION AT NO COST TO THE OWNER.

CALL BEFORE YOU DIG
GOPHER STATE ONE CALL
 TWIN CITY AREA: 851-454-0022
 TOLL FREE 1-800-252-1189

NOTES: SEE SHEET C-100



PLANTING SCHEDULE:

QTY	COMMON NAME	LATIN NAME	HEIGHT	WIDTH	SPACING	SIZE
64	Big Bluestem	Andropogon gerardii	4'-6"	1.5'	PER PLAN	#1 POT
168	Little Bluestem	Schizachyrium scoparium	3'-4"	2'	PER PLAN	#1 POT
233	Prairie Dropseed	Sporobolus heterostachys	2'	2'	PER PLAN	#1 POT
227	Purple Coneflower	Echinacea purpurea	3'-3"	3.5'	PER PLAN	#1 POT
112	Orange Coneflower	Rudbeckia 'Goldsturm'	3.5'	1.5'	PER PLAN	#1 POT
117	Sedium Autumn Fire	Sedium 'Autumn Fire'	1.5'	2'	PER PLAN	#1 POT

NO.	DESCRIPTION	DATE	BY	CHKD BY	DATE

NOT FOR CONSTRUCTION

CONSULTOR

Responsive partner. Exceptional outcomes.

PROJECT TITLE: **NORTHFIELD FIRE STATION ADDITION**

CITY OF NORTHFIELD

PROJECT TITLE: **LANDSCAPE PLANTING PLAN**

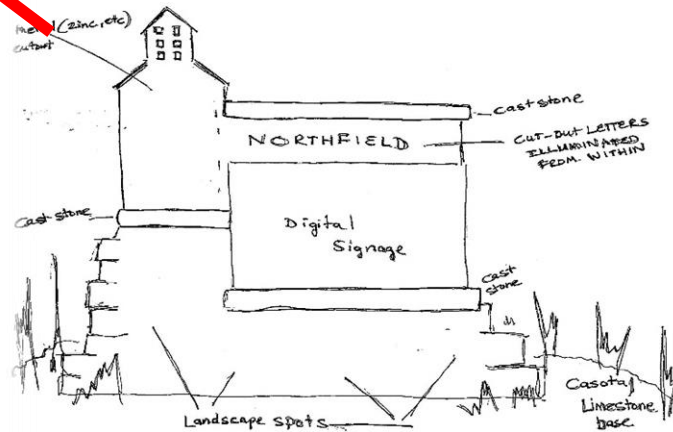
DATE BY: MIS	CHK'D BY: MIS	APP'D BY: MIS	DWG DATE: APRIL 2017
PROJECT NO.	SHEET NO.	SCALE: AS SHOWN	REV. NO.
		L-104	

Gateway Enhancements – options

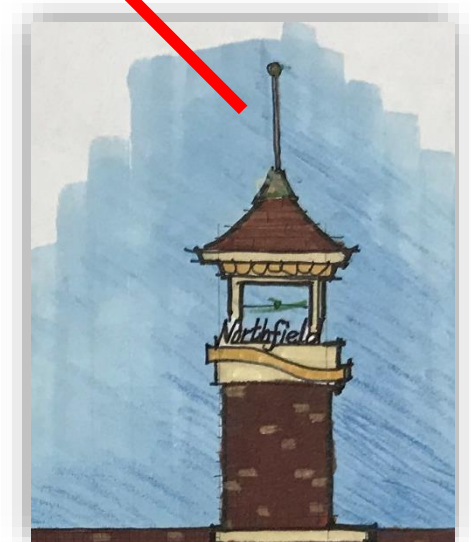
Ames Park adjacent to roadway



Underground Power Lines



Monument Sign/Digital Events Sign



Monument or Public Art (1% for Arts)

Gateway Concept Sketch



AMES PARK GATEWAY

Northfield Corridor Improvement Plan

Public Art

Public Art

Public art is an important aspect of the design for the City gateway corridors. Public art has the ability to create a unifying element within the City while enhancing the vehicular and pedestrian's experience along the corridors. It is recommended that any future public gateway improvement project for the City allocate 1% to 5% of the budget to public art.

Future public art should be located on streets and in public spaces with high volumes of vehicular and pedestrian traffic to enhance the experience and denote a unique and special places for people to enjoy.

Public art should be considered in the design of utilitarian streetscape elements such as benches, trash receptacles, way-finding signage and lighting. When possible, public art should be included within the public realm that is interactive.

Public art should be considered during the planning and design phase of projects to define opportunities to integrate art with other infrastructure improvements and streetscape elements.



Northfield Corridor Improvement Plan

Monuments



Gateway/ Entry Monuments

Vertical Entry features should be used at prominent gateways, as described in the previously prepared Downtown Streetscape Framework Plan. These elements signal entry into the City of Northfield and the Downtown area. The design of the vertical monuments along the major gateway corridors, and at gateway intersections, will need further design and development, as well as, coordination with future downtown improvement projects. The vertical elements should be designed in a way to maximize visibility along the gateway corridors and serve as informational and directional markers into the Downtown area.

The site location for each of the designated entry monuments/ features should be designed in a way to reinforce the desired image and character of the Downtown and community. The design should incorporate landscape materials that recall the native vegetation and ecosystems of the community, as well as, decorative paving, lighting and possibly public art. Each monument should incorporate brick, natural stone or ornamental metal into the design, to help create a cohesive palette of materials for the streetscape elements.



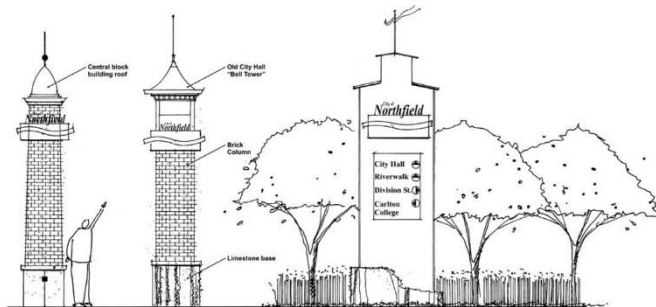
Downtown Northfield Streetscape Framework Plan – *Gateway Monuments*

Gateway/ Entry Monuments

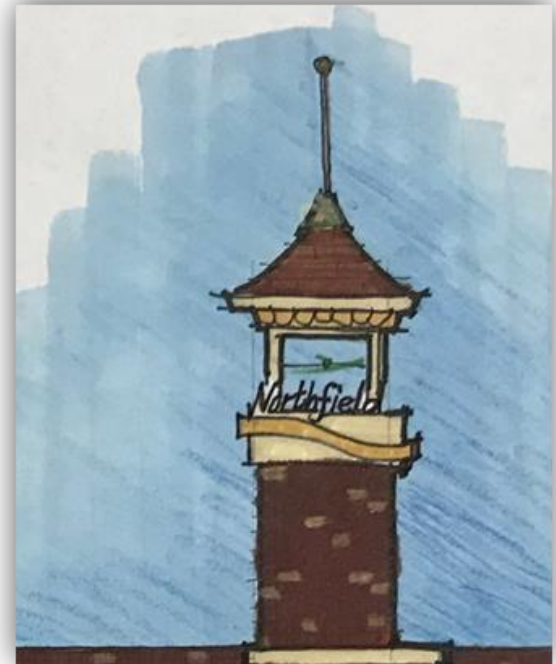
Vertical entry features should be used at prominent gateways, as described on the Streetscape Framework Plan. These elements signal entry into the City of Northfield and the Downtown area. The design of the vertical monuments along the major gateway corridors and at gateway intersections will need further design and development, as well as coordination with future downtown improvement projects. The vertical elements should be designed in a way to maximize visibility along the gateway corridors and serve as informational and directional markers into the Downtown area.

The site location for each of the designated entry monuments/ features should be designed in a way to reinforce the desired image and character of the Downtown and community. The design should incorporate landscape materials that recall the native vegetation and ecosystems of the community, as well as, decorative paving, lighting and possibly public art. Each monument should incorporate brick, natural stone or ornamental metal into the design, to help create a cohesive palette of materials for the streetscape elements. Each monument could also be designed in a manner to reflect a significant architectural element feature within the Downtown or a community icon.

A series of gateway monumentation concepts were prepared as part of this project, as seen below, but no decision regarding a preferred alternative has been selected at this time.



Gateway Monument/ Feature Concepts



Gateway & Ames Park Cost Estimates

Optional Cost Estimate Illustrations.	Estimated Cost (\$)
<u>Recommended Funding</u>	
Public Art (1% of construction cost)	33,930
Monument digital sign & landscaping	111,570
<u>5th Street landscaping</u>	<u>29,604</u>
Subtotal	\$175,104
<u>Not Recommended Options</u>	
Parking Lot (22 spaces)	66,156
Playground	159,300
Monument	Not available
Other (sidewalk enlargement, base for art or monument sculpture, new trees, picnic tables)	48,840

See attachment for detail

Action for Discussion

- Consider Resolution Budget Amendment
- Will be a park fund project.