

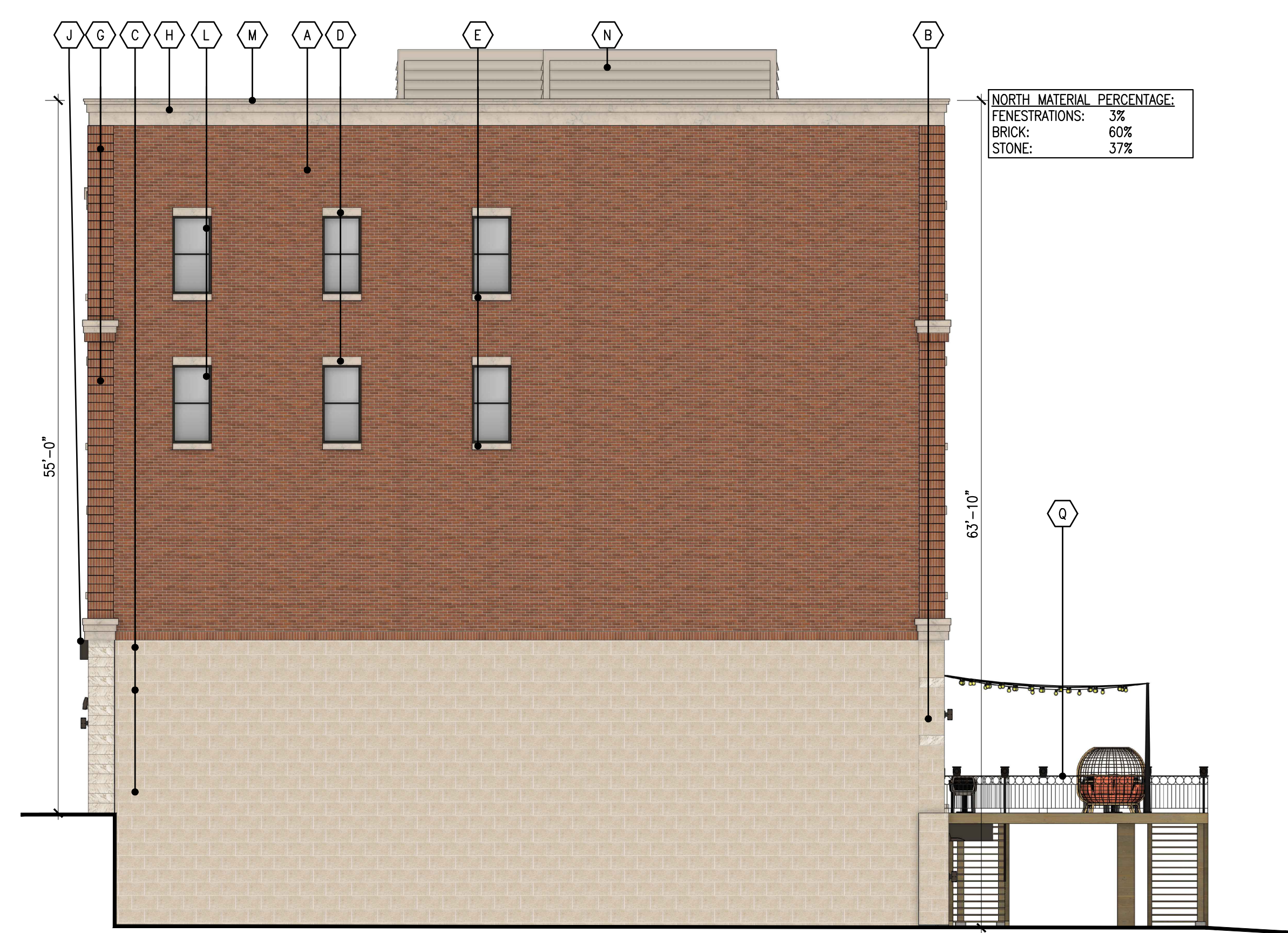
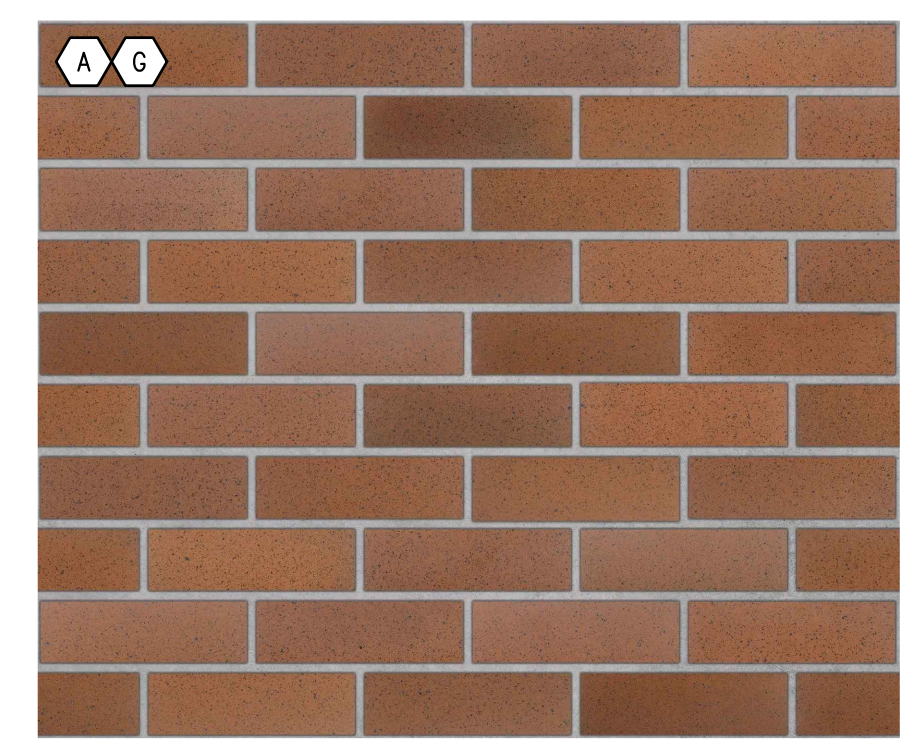
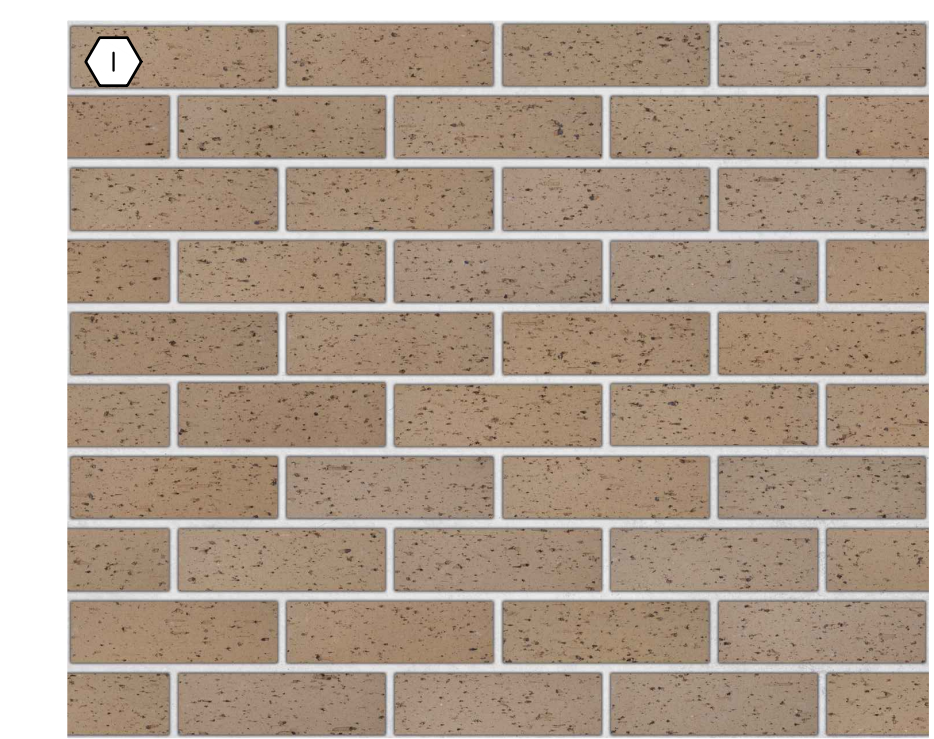
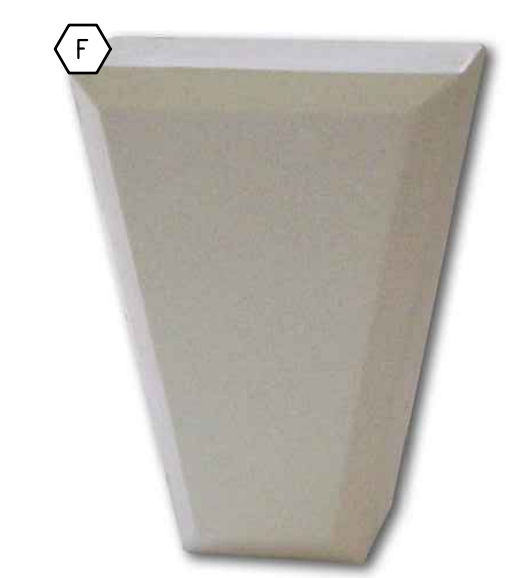
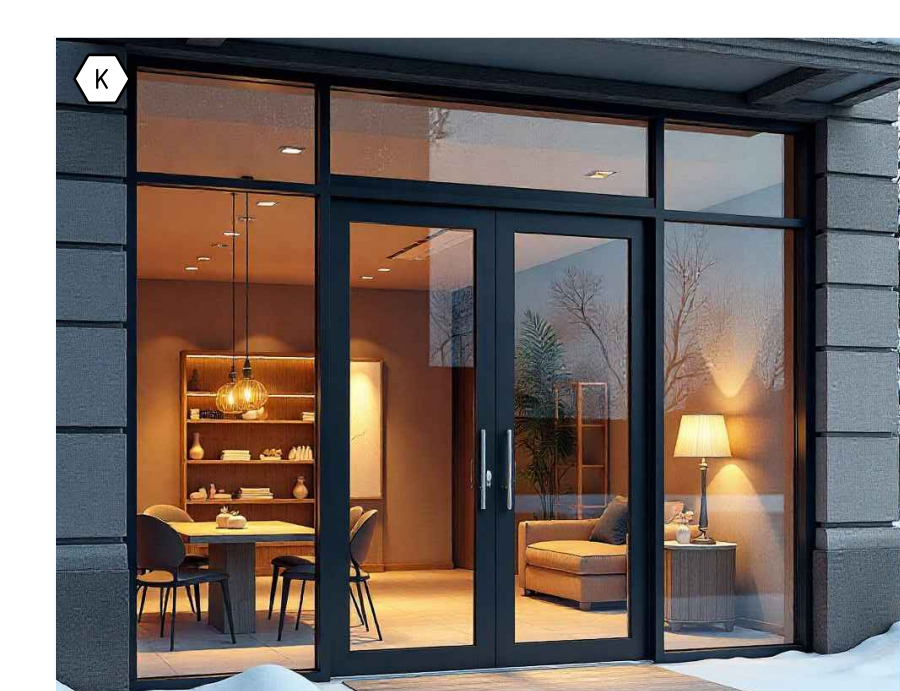
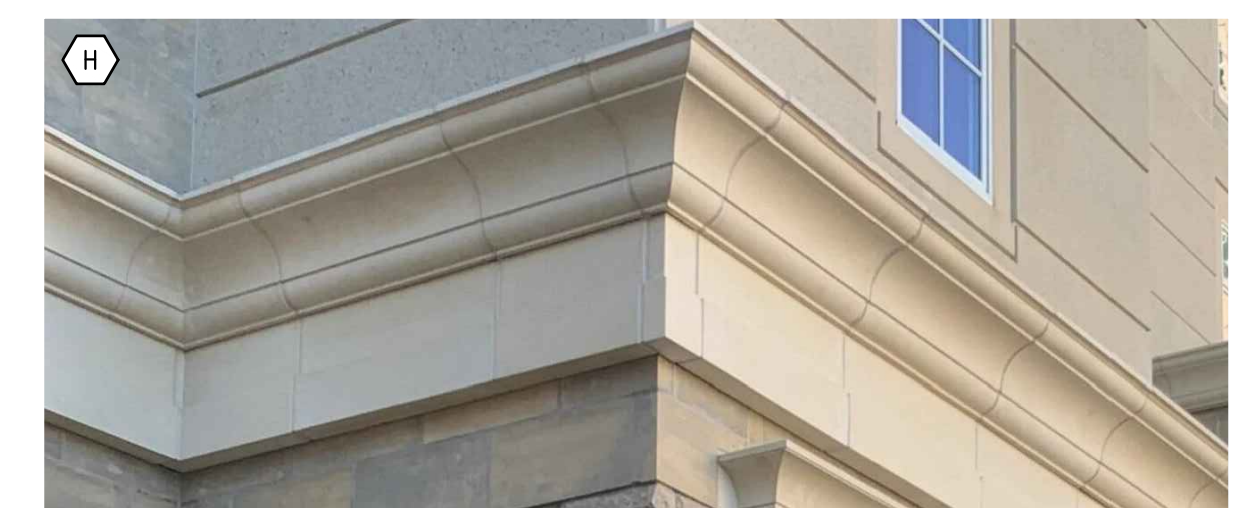


**EAST MATERIAL PERCENTAGE:**  
 FENESTRATIONS: 26%  
 BRICK: 43%  
 STONE: 31%

| MATERIAL KEYNOTES  |   |
|--|---|
| <b>A</b> THIN BRICK #1:<br>MANUF: ENDICOTT<br>PRODUCT: THIN BRICK<br>COLOR: DESERT IRONSPOT DARK<br>FINISH: SMOOTH                       | <b>J</b> ALUMINUM COMPOSITE MATERIAL EYEBROW:<br>MANUF: ARCONIC<br>PRODUCT: REYNOLDBOND<br>COLOR: DEAP BLACK  |
| <b>B</b> CULTURED STONE:<br>MANUF: CORONADO<br>PRODUCT: CLASSIC SERIES<br>FINISH: SMOOTH LIMESTONE<br>COLOR: CREAM                       | <b>K</b> ALUMINUM STOREFRONT SYSTEM:<br>MANUF: OLDCASTLE (OR EQUAL)<br>PRODUCT: SERIES 3000XT<br>COLOR: BLACK |
| <b>C</b> CULTURED STONE BAND:<br>MANUF: CORONADO<br>PRODUCT: DESIGNER SERIES<br>FINISH: SPLIT LIMESTONE<br>COLOR: CREAM                  | <b>L</b> SINGLE HUNG WINDOW:<br>MANUF: ANDERSEN<br>PRODUCT: 100 SERIES<br>COLOR: BLACK                        |
| <b>D</b> 8" PRECAST LINTEL:<br>MANUF: ARRISCRAFT<br>PRODUCT: CAMBRIDGE SILL<br>COLOR: LIMESTONE<br>FINISH: TBD                           | <b>M</b> PREFINISHED METAL CAP FLASHING:<br>MANUF: CMG (OR EQUAL)<br>COLOR: SANDSTONE                         |
| <b>E</b> 6" PRECAST LINTEL:<br>MANUF: ARRISCRAFT<br>PRODUCT: CAMBRIDGE SILL<br>COLOR: LIMESTONE<br>FINISH: TBD                           | <b>N</b> MECHANICAL SCREEN:<br>MANUF: ENVISOR (OR EQUAL)<br>PRODUCT: HORIZONTAL RIB<br>COLOR: PUTTY           |
| <b>F</b> ARCHED BRICK EYEBROW W/KEYSTONE:<br>MANUF: ARRISCRAFT<br>PRODUCT: ARRIS-CAST KEYSTONE<br>COLOR: LIMESTONE<br>FINISH: TBD        | <b>O</b> INSULATED OVERHEAD GARAGE DOOR:<br>MANUF: MIDLAND (OR EQUAL)<br>COLOR: BLACK                         |
| <b>G</b> THIN BRICK #1 SOLIDER COURSE QUOINS:<br>MANUF: ENDICOTT<br>PRODUCT: THIN BRICK<br>COLOR: DESERT IRONSPOT DARK<br>FINISH: SMOOTH | <b>P</b> LIGHT FIXTURES: (SEE SITE LIGHTING PLAN)<br>MANUF: TBD<br>COLOR: BLACK                               |
| <b>H</b> PRECAST CORNICE:<br>MANUF: ARRISCRAFT<br>PRODUCT: ARRIS-CAST<br>COLOR: LIMESTONE<br>FINISH: TBD<br>PROFILE: TBD                 | <b>Q</b> DECK SYSTEM:<br>RAILING: BLACK<br>SUBSTRUCTURE: BROWN TREATED<br>DECKING: TREX (OR EQUAL)            |
| <b>I</b> THIN BRICK #2:<br>MANUF: ENDICOTT<br>PRODUCT: THIN BRICK<br>COLOR: LIGHT SANDSTONE<br>FINISH: VELOUR                            |   |

1 EAST ELEVATION  
A301

SCALE: 1/8" = 1'-0"



**NORTH MATERIAL PERCENTAGE:**  
 FENESTRATIONS: 3%  
 BRICK: 60%  
 STONE: 37%

2 NORTH ELEVATION  
A301

SCALE: 1/8" = 1'-0"

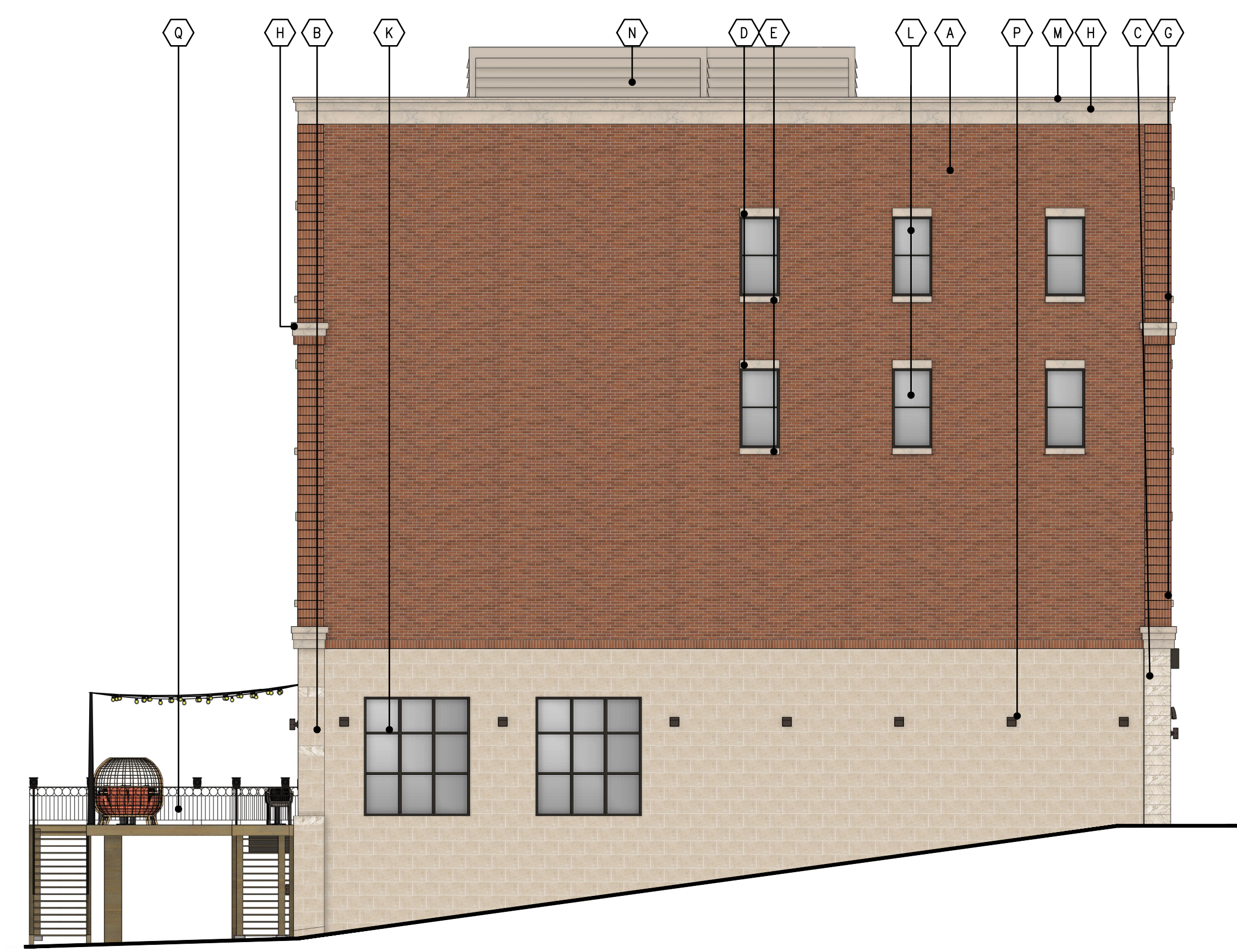
| ISSUES / REVISIONS: |            |
|---------------------|------------|
| SITE PLAN REVIEW    | 04.20.2026 |
| HFC REVIEW          | 05.22.2026 |



WEST MATERIAL PERCENTAGE:  
 FENESTRATIONS: 21%  
 BRICK: 36%  
 STONE: 41%

| MATERIAL KEYNOTES  |  |
|--|--|
| (A) THIN BRICK #1:<br>MANUF: ENDICOTT<br>PRODUCT: THIN BRICK<br>COLOR: DESERT IRONSPOT DARK<br>FINISH: SMOOTH                      | (J) ALUMINUM COMPOSITE MATERIAL EYEBROW:<br>MANUF: ARCONIC<br>PRODUCT: REYNOBOND<br>COLOR: DEAP BLACK    |
| (B) CULTURED STONE:<br>MANUF: CORONADO<br>PRODUCT: CLASSIC SERIES<br>FINISH: SMOOTH LIMESTONE<br>COLOR: CREAM                      | (K) ALUMINUM STOREFRONT SYSTEM:<br>MANUF: OLDCASTLE (OR EQUAL)<br>PRODUCT: SERIES 3000XT<br>COLOR: BLACK |
| (C) CULTURED STONE BAND:<br>MANUF: CORONADO<br>PRODUCT: DESIGNER SERIES<br>FINISH: SPLIT LIMESTONE<br>COLOR: CREAM                 | (L) SINGLE HUNG WINDOW:<br>MANUF: ANDERSEN<br>PRODUCT: 100 SERIES<br>COLOR: BLACK                        |
| (D) 8" PRECAST LINTEL:<br>MANUF: ARRISCRAFT<br>PRODUCT: CAMBRIDGE SILL<br>COLOR: LIMESTONE<br>FINISH: TBD                          | (M) PREFINISHED METAL CAP FLASHING:<br>MANUF: CMG (OR EQUAL)<br>COLOR: SANDSTONE                         |
| (E) 6" PRECAST LINTEL:<br>MANUF: ARRISCRAFT<br>PRODUCT: CAMBRIDGE SILL<br>COLOR: LIMESTONE<br>FINISH: TBD                          | (N) MECHANICAL SCREEN:<br>MANUF: ENVISOR (OR EQUAL)<br>PRODUCT: HORIZONTAL RIB<br>COLOR: PUTTY           |
| (F) ARCHED BRICK EYEBROW W/KEYSTONE:<br>MANUF: ARRISCRAFT<br>PRODUCT: ARRIS-CAST KEYSTONE<br>COLOR: LIMESTONE<br>FINISH: TBD       | (O) INSULATED OVERHEAD GARAGE DOOR:<br>MANUF: MIDLAND (OR EQUAL)<br>COLOR: BLACK                         |
| (G) THIN BRICK #1 SOLIDER COURSE QUINS:<br>MANUF: ENDICOTT<br>PRODUCT: THIN BRICK<br>COLOR: DESERT IRONSPOT DARK<br>FINISH: SMOOTH | (P) LIGHT FIXTURES: (SEE SITE LIGHTING PLAN)<br>MANUF: TBD<br>COLOR: BLACK                               |
| (H) PRECAST CORNICE:<br>MANUF: ARRISCRAFT<br>PRODUCT: ARRIS-CAST<br>COLOR: LIMESTONE<br>FINISH: TBD<br>PROFILE: TBD                | (Q) DECK SYSTEM:<br>RAILING: BLACK<br>SUBSTRUCTURE: BROWN TREATED<br>DECKING: TREX (OR EQUAL)            |
| (I) THIN BRICK #2:<br>MANUF: ENDICOTT<br>PRODUCT: THIN BRICK<br>COLOR: LIGHT SANDSTONE<br>FINISH: VELOUR                           |  |

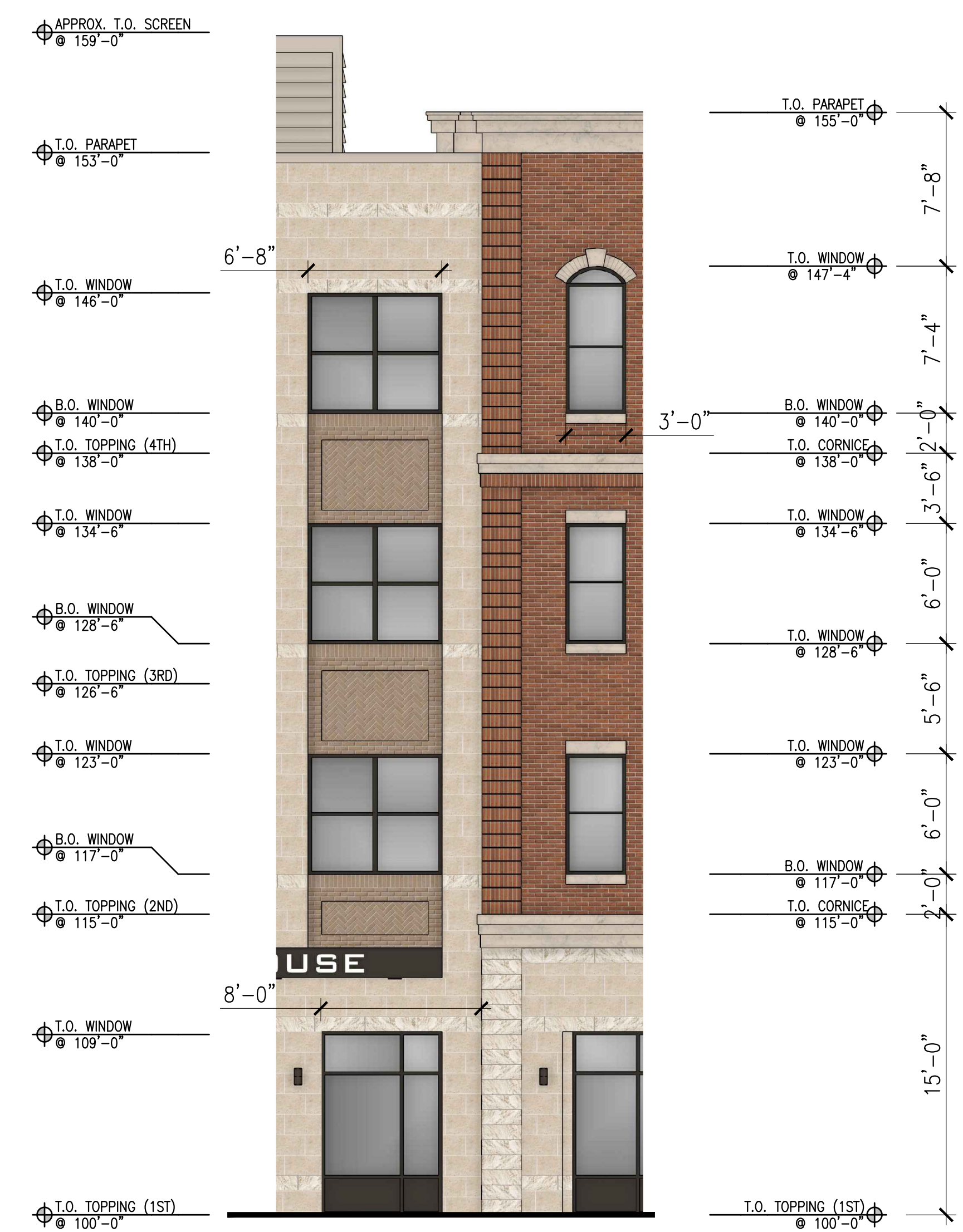
1 WEST ELEVATION  
A302



SOUTH MATERIAL PERCENTAGE:  
 FENESTRATIONS: 7%  
 BRICK: 65%  
 STONE: 28%

2 SOUTH ELEVATION  
A302

SCALE: 1/8" = 1'-0"



3 PARTIAL ELEVATION  
A302

SCALE: 3/16" = 1'-0"

| ISSUES / REVISIONS: |            |
|---------------------|------------|
| SITE PLAN REVIEW    | 04.20.2025 |
| HFC REVIEW          | 05.22.2025 |