

# CEDAR MEADOWS

KNOW ALL PERSONS BY THESE PRESENTS: That North and Cedar 62, LLP, a Minnesota Limited Liability Partnership, fee owners of the following described property to wit:

Outlot A, NORTH BOOSTER STATION ADDITION, Dakota County, Minnesota.

Have caused the same to be surveyed and platted as CEDAR MEADOWS and do hereby dedicate to the public for public use the thoroughfares and easements for drainage and utility purposes as created by this plat.

In witness whereof said North and Cedar 62, LLP, a Minnesota Limited Liability Partnership, has caused these presents to be signed by its proper officer this \_\_\_\_\_ day of \_\_\_\_\_, 20\_\_\_\_.

Signed: North and Cedar 62, LLP

\_\_\_\_\_, its \_\_\_\_\_.

STATE OF MINNESOTA

COUNTY OF \_\_\_\_\_

This instrument was acknowledged before me on \_\_\_\_\_ day of \_\_\_\_\_, 20\_\_\_\_,

by \_\_\_\_\_ of North and Cedar 62, LLP, a Minnesota Limited Liability Partnership, on behalf of the partnership.

\_\_\_\_\_  
Signature

\_\_\_\_\_  
Printed

Notary Public, \_\_\_\_\_ County, Minnesota

My Commission Expires: \_\_\_\_\_

## SURVEYORS CERTIFICATE

I, Nicholas Hillmer, do hereby certify that this plat was prepared by me or under my direct supervision; that I am a duly Licensed Land Surveyor in the State of Minnesota; that this plat is a correct representation of the boundary survey; that all mathematical data and labels are correctly designated on this plat; that all monuments depicted on this plat have been, or will be correctly set within one year; that all water boundaries and wet lands, as defined in Minnesota Statutes, Section 505.01, Subd. 3, as of the date of this certificate are shown and labeled on this plat; and all public ways are shown and labeled on this plat.

Dated this \_\_\_\_\_ day of \_\_\_\_\_, 20\_\_\_\_.

\_\_\_\_\_  
Nicholas Hillmer, Licensed Land Surveyor  
Minnesota License No. 45774

STATE OF MINNESOTA

COUNTY OF \_\_\_\_\_

This instrument was acknowledged before me this \_\_\_\_\_ day of \_\_\_\_\_, 20\_\_\_\_, by Nicholas Hillmer.

\_\_\_\_\_  
(Notary Signature)

\_\_\_\_\_  
(Notary Printed Name)

Notary Public, \_\_\_\_\_ County, Minnesota.

My Commission Expires \_\_\_\_\_

CITY COUNCIL, CITY OF NORTHFIELD, MINNESOTA

This plat of CEDAR MEADOWS was approved and accepted by the City Council of the City of Northfield, Minnesota at a regular meeting held this \_\_\_\_\_ day of \_\_\_\_\_, 20\_\_\_\_, and said plat is in compliance with the provisions of Minnesota Statutes, 505.03, Subd. 2.

City Council, City of Northfield, Minnesota

by: \_\_\_\_\_  
Mayor

by: \_\_\_\_\_  
City Administrator

DAKOTA COUNTY SURVEYOR

Pursuant to Section 383D.65, Minnesota Statutes, this plat has been approved this \_\_\_\_\_ day of \_\_\_\_\_, 20\_\_\_\_.

By \_\_\_\_\_

Dakota County Surveyor

DAKOTA COUNTY TREASURER-AUDITOR

I hereby certify the the taxes for the year \_\_\_\_\_ for the land described on this plat as CEDAR MEADOWS has been paid and that no delinquent taxes are due and transfer entered this \_\_\_\_\_ day of \_\_\_\_\_, 20\_\_\_\_.

by \_\_\_\_\_  
County Treasurer-Auditor, Dakota County, Minnesota

DAKOTA COUNTY RECORDER

I hereby certify that this instrument was filed in the office of the County Recorder for record on this \_\_\_\_\_ day of \_\_\_\_\_, 20\_\_\_\_ at \_\_\_\_\_ o'clock \_\_\_\_M. and was duly recorded in Book \_\_\_\_\_ of \_\_\_\_\_ on page \_\_\_\_\_.

\_\_\_\_\_  
Dakota County Recorder

**ANDERSON**

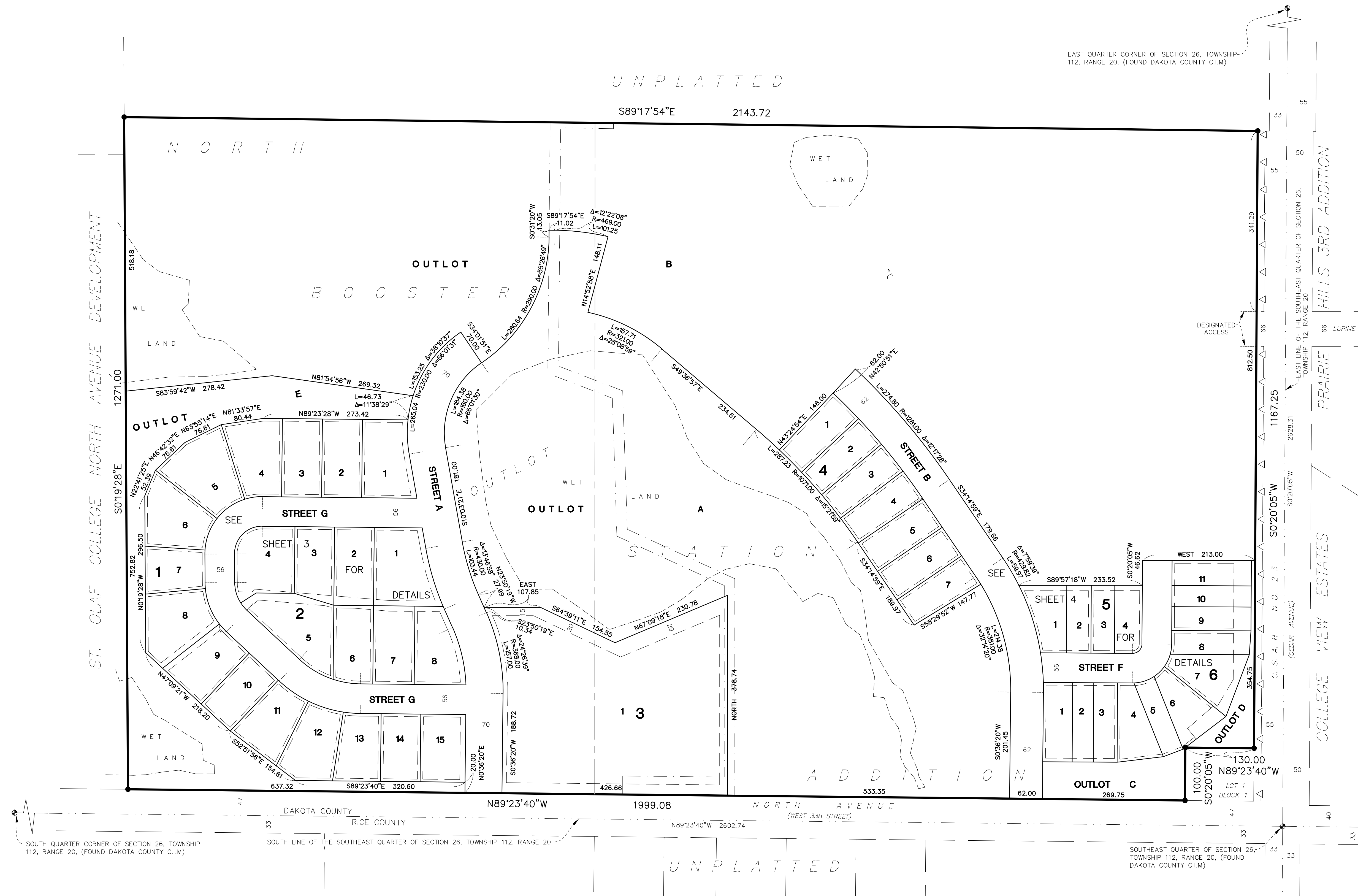
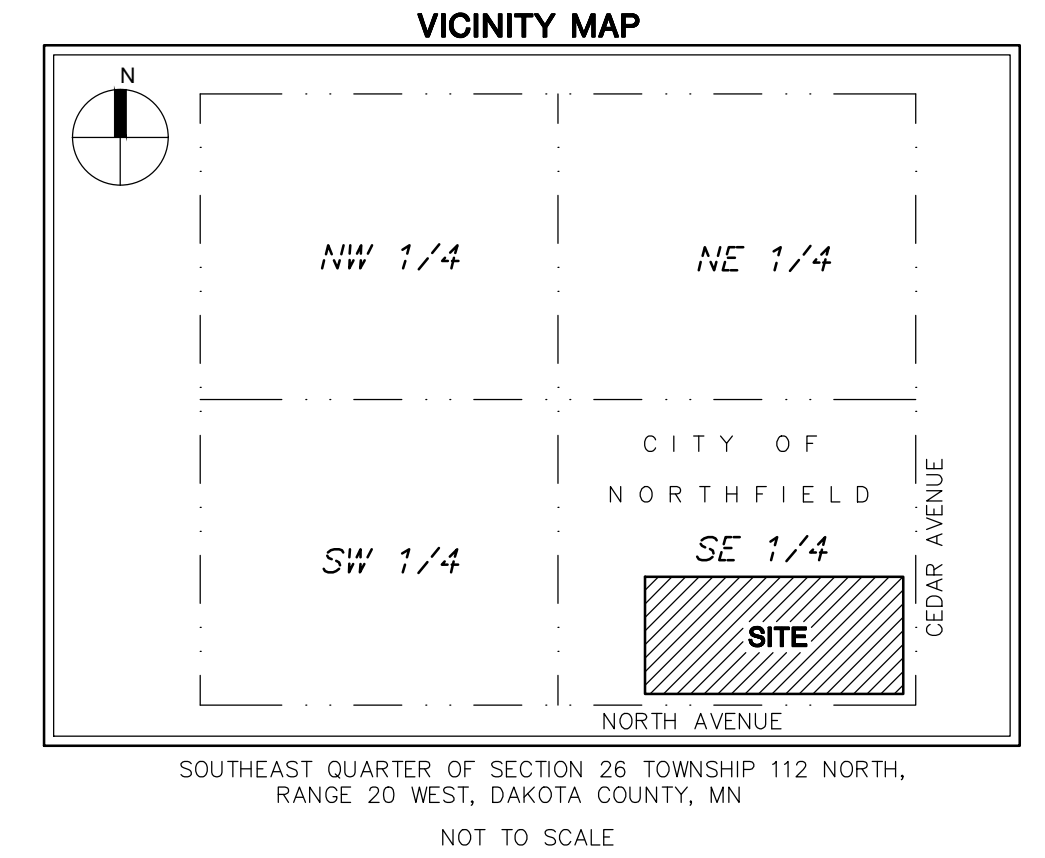
ENGINEERING • ARCHITECTURE • LAND SURVEYING  
ENVIRONMENTAL SERVICES • LANDSCAPE ARCHITECTURE

# CEDAR MEADOWS

UNPLATTED

S89°17'54"E 2143.72

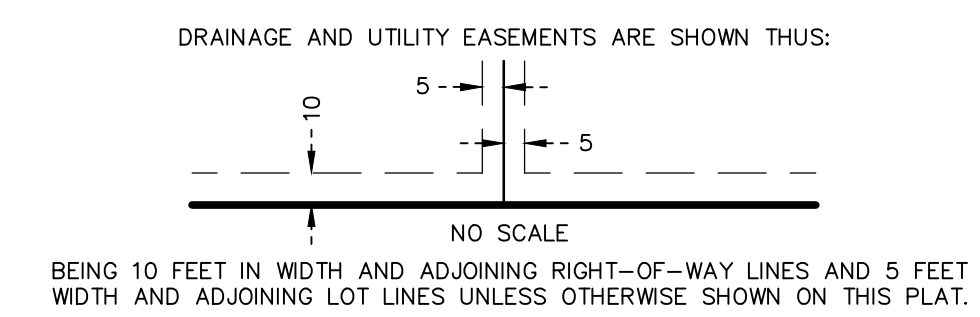
EAST QUARTER CORNER OF SECTION 26, TOWNSHIP 112, RANGE 20, (FOUND DAKOTA COUNTY C.I.M)



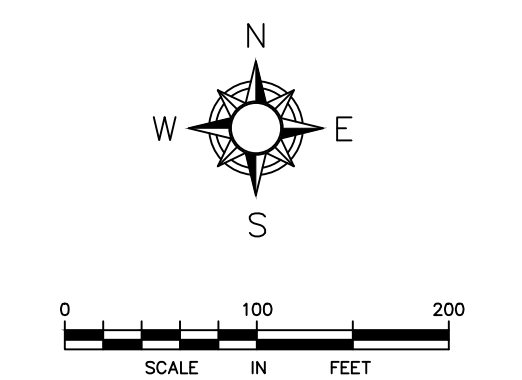
△ DENOTES RESTRICTED ACCESS DEDICATED TO DAKOTA COUNTY

NO MONUMENT SYMBOLS SHOWN AT ANY STATUTE REQUIRED LOCATION INDICATES A PLAT MONUMENT THAT WILL BE SET AND WHICH SHALL BE PLACED WITHIN ONE YEAR OF THE RECORDING DATE OF THE PLAT. MONUMENT SHALL BE A 1/2 INCH BY 14 INCH IRON PIPE SET AND MARKED BY LICENSE NO. 45774

● DENOTES FOUND 3/4 INCH BY 14 INCH IRON PIPE MONUMENT CAPPED BY LICENSE NO. 43110 EXCEPT AS SHOWN



BEARING REFERENCE:  
THE HORIZONTAL DATUM AND BEARINGS ARE THE DAKOTA COUNTY COORDINATE SYSTEM NAD83 (2011)

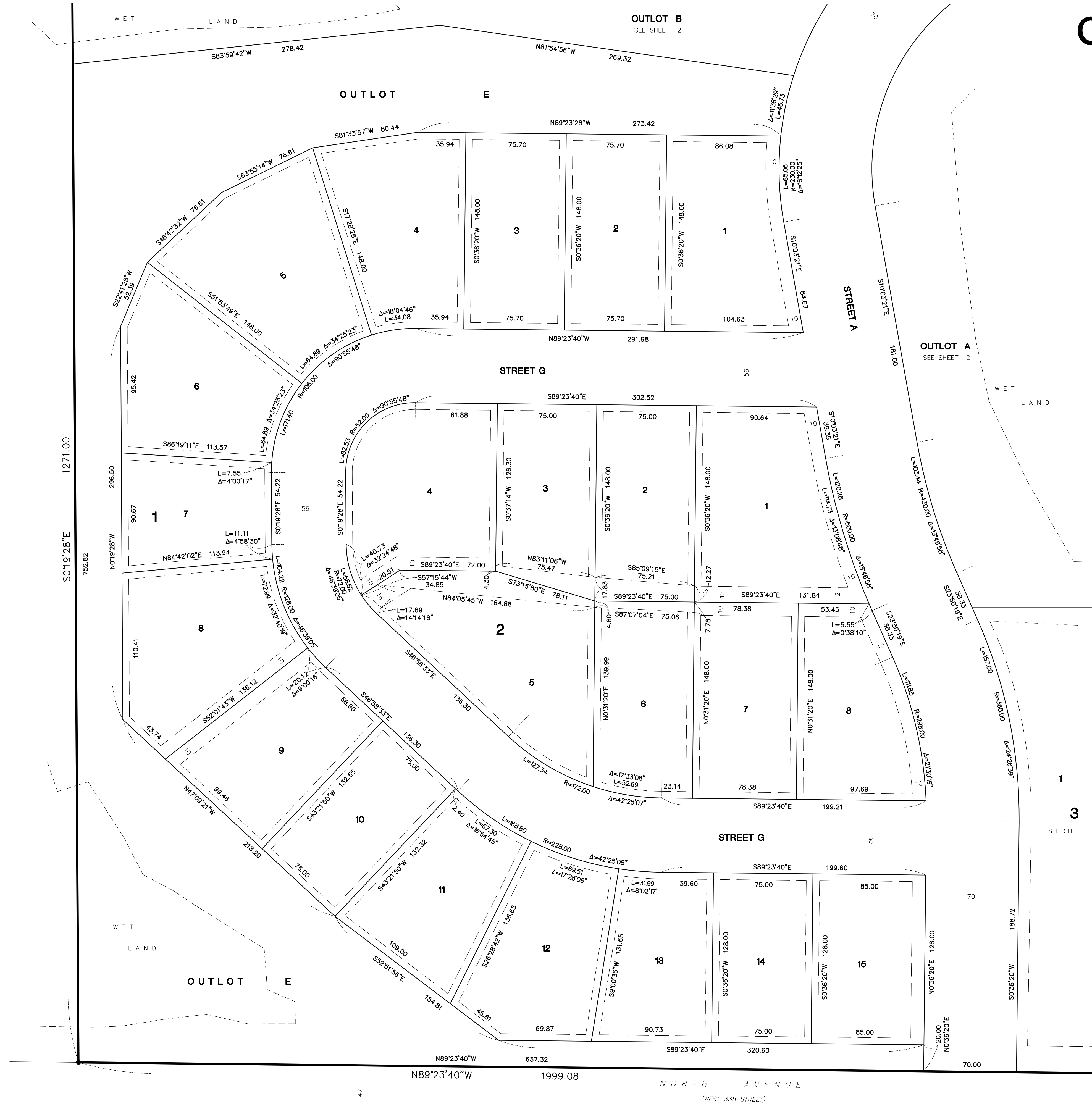


**ANDERSON**

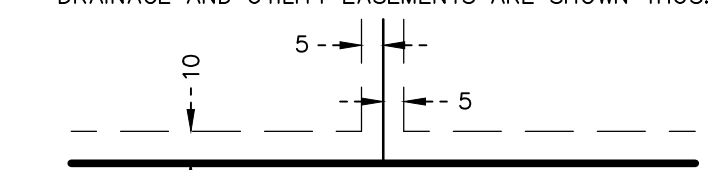
ENGINEERING • ARCHITECTURE • LAND SURVEYING  
ENVIRONMENTAL SERVICES • LANDSCAPE ARCHITECTURE

# CEDAR MEADOWS

## DETAIL SHEET 3



DRAINAGE AND UTILITY EASEMENTS ARE SHOWN THUS:

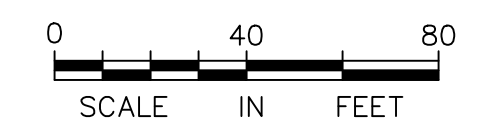
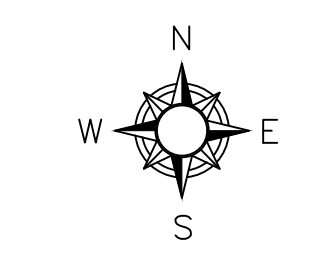


BEING 10 FEET IN WIDTH AND ADJOINING RIGHT-OF-WAY LINES AND 5 FEET IN WIDTH AND ADJOINING LOT LINES UNLESS OTHERWISE SHOWN ON THIS PLAT.

NO MONUMENT SYMBOLS SHOWN AT ANY STATUTE REQUIRED LOCATION INDICATES A PLAT MONUMENT THAT WILL BE SET AND WHICH SHALL BE PLACED WITHIN ONE YEAR OF THE RECORDING DATE OF THE PLAT. MONUMENT SHALL BE A 1/2 INCH BY 14 INCH IRON PIPE SET AND MARKED BY LICENCE NO. 45774

● DENOTES FOUND 3/4 INCH BY 14 INCH IRON PIPE MONUMENT CAPPED BY LICENSE NO. 43110 EXCEPT AS SHOWN

BEARING REFERENCE:  
THE HORIZONTAL DATUM AND BEARINGS ARE THE DAKOTA COUNTY COORDINATE SYSTEM NAD83 (2011)



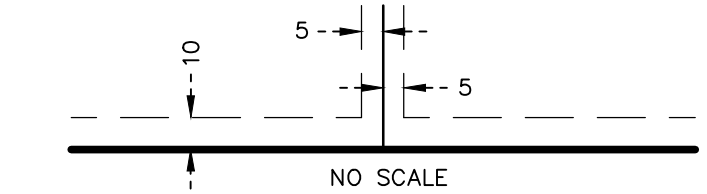
**ANDERSON**

ENGINEERING • ARCHITECTURE • LAND SURVEYING  
ENVIRONMENTAL SERVICES • LANDSCAPE ARCHITECTURE

# CEDAR MEADOWS

## DETAIL SHEET 4

DRAINAGE AND UTILITY EASEMENTS ARE SHOWN THUS:



BEING 10 FEET IN WIDTH AND ADJOINING RIGHT-OF-WAY LINES AND 5 FEET IN WIDTH AND ADJOINING LOT LINES UNLESS OTHERWISE SHOWN ON THIS PLAT.

△ DENOTES RESTRICTED ACCESS DEDICATED TO DAKOTA COUNTY

NO MONUMENT SYMBOLS SHOWN AT ANY STATUTE REQUIRED LOCATION INDICATES A PLAT MONUMENT THAT WILL BE SET AND WHICH SHALL BE PLACED WITHIN ONE YEAR OF THE RECORDING DATE OF THE PLAT. MONUMENT SHALL BE A 1/2 INCH BY 1/2 INCH IRON PIPE SET AND MARKED BY LICENCE NO. 45774

● DENOTES FOUND 3/4 INCH BY 14 INCH IRON PIPE MONUMENT CAPPED BY LICENSE NO. 43110 EXCEPT AS SHOWN

BEARING REFERENCE:  
THE HORIZONTAL DATUM AND BEARINGS ARE THE DAKOTA COUNTY COORDINATE SYSTEM NAD83 (2011)

OUTLOT B  
SEE SHEET 2

OUTLOT B  
SEE SHEET 2

OUTLOT A  
SEE SHEET 2

OUTLOT C

OUTLOT D

A D D I T I O N

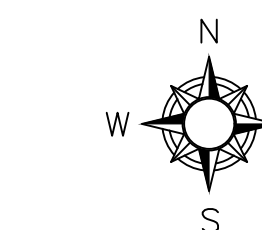
N89°23'40"W 1999.08

NORTH AVENUE  
(WEST 338 STREET)

C. S. A. H. N. O. 2 3  
(CEDAR AVENUE)

EAST LINE OF THE SOUTHEAST QUARTER OF SECTION 26,  
TOWNSHIP 112, RANGE 20

COLLEGE VIEW ESTATES



0 40 80  
SCALE IN FEET

**ANDERSON**

ENGINEERING • ARCHITECTURE • LAND SURVEYING  
ENVIRONMENTAL SERVICES • LANDSCAPE ARCHITECTURE