



Northfield Ice Arena Northfield, MN

City Council Presentation | September 17, 2024

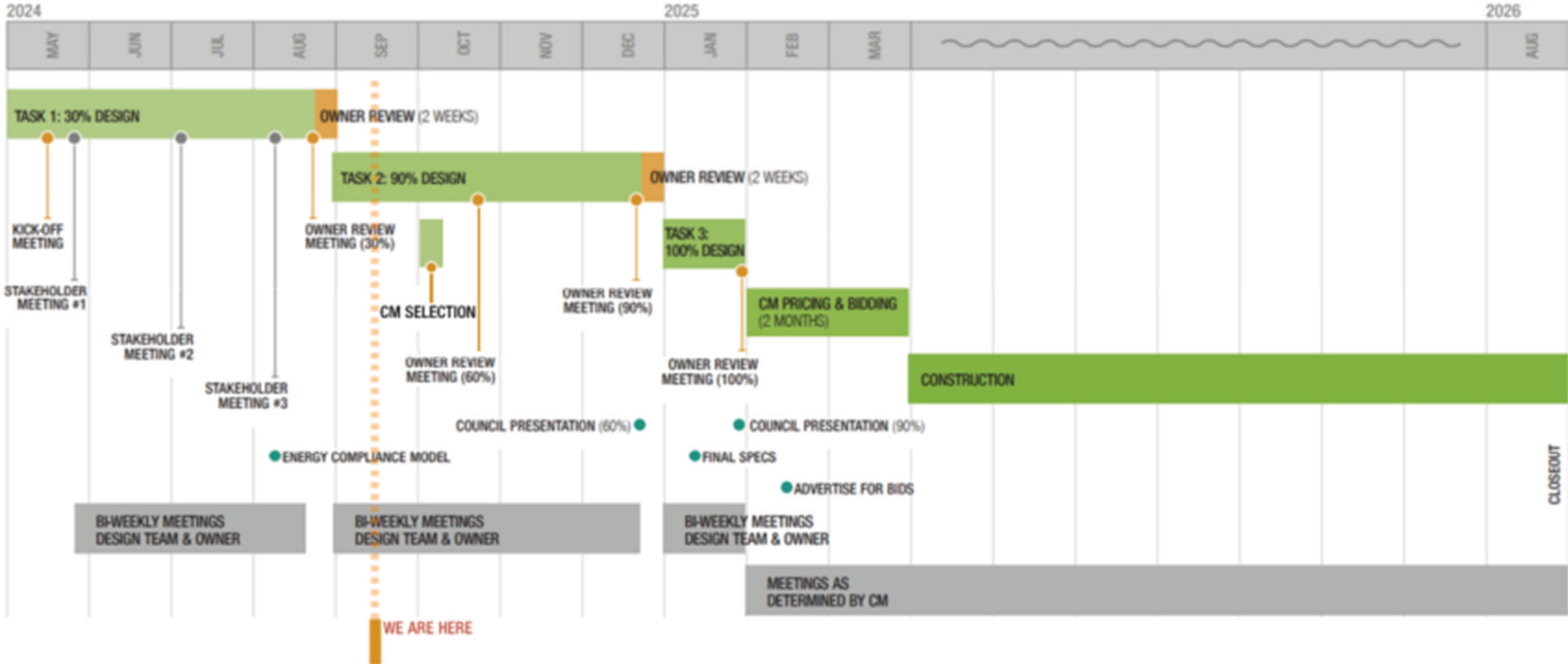


An architectural sketch of a modern building with a corrugated metal facade and large glass openings. The sketch is rendered in a light green tone and is overlaid on a solid green background. The building has a long, low profile with a flat roof. A large glass entrance on the left shows a person standing and another sitting on a bench inside. The foreground shows a paved area with a double line. The background includes trees and a sky with birds.

SCHEDULE

NORTHFIELD ICE ARENA
NORTHFIELD, MINNESOTA

Schedule



An architectural sketch of the Northfield Ice Arena, featuring a long, low-profile building with vertical corrugated metal siding and large glass openings. The sketch is rendered in a light, sketchy style. A semi-transparent green overlay covers the entire image. The text 'LEED & ART' is centered in large white letters. Below it, 'NORTHFIELD ICE ARENA' and 'NORTHFIELD, MINNESOTA' are written in smaller white letters. In the foreground, a person stands near a bench, and another person sits on the bench. The background shows trees and a sky with birds.

LEED & ART

NORTHFIELD ICE ARENA
NORTHFIELD, MINNESOTA

LEED

Highlights

Optimize Energy Performance Credit

- Prerequisite will require the City to share energy data with USGBC for five years
- Work with the City to balance energy savings with system cost.
- Refrigerants for HVAC and ice are already planned to meet the refrigerant prerequisite and credit

Water Efficiency

- Prerequisite will require the City to share water usage data with USGBC for five years
- Consider native plantings to eliminate irrigation

LEED



LEED v4 for BD+C: New Construction and Major Renovation Project Checklist

Project Name: 23335 Northfield Ice Arena
Date: 9/10/2024

Y ? N
1 0 0

Credit Integrative Process 1

2 0 30 Location and Transportation 16

0	0	16	Credit	LEED for Neighborhood Development Location	16
0	0	1	Credit	Sensitive Land Protection	1
0	0	2	Credit	High Priority Site	2
0	0	5	Credit	Surrounding Density and Diverse Uses	5
0	0	5	Credit	Access to Quality Transit	5
1	0	0	Credit	Bicycle Facilities	1
0	0	1	Credit	Reduced Parking Footprint	1
1	0	0	Credit	Green Vehicles	1

5 4 0 Sustainable Sites 10

Y			Prereq	Construction Activity Pollution Prevention	Required
1	0	0	Credit	Site Assessment	1
0	2	0	Credit	Site Development - Protect or Restore Habitat	2
0	1	0	Credit	Open Space	1
3	0	0	Credit	Rainwater Management	3
0	1	0	Credit	Heat Island Reduction	2
1	0	0	Credit	Light Pollution Reduction	1

4 4 3 Water Efficiency 11

Y			Prereq	Outdoor Water Use Reduction	Required
Y			Prereq	Indoor Water Use Reduction	Required
Y			Prereq	Building-Level Water Metering	Required
2	0	0	Credit	Outdoor Water Use Reduction	2
1	2	3	Credit	Indoor Water Use Reduction	6
0	2	0	Credit	Cooling Tower Water Use	2
1	0	0	Credit	Water Metering	1

14 10 9 Energy and Atmosphere 33

Y			Prereq	Fundamental Commissioning and Verification	Required
Y			Prereq	Minimum Energy Performance	Required
Y			Prereq	Building-Level Energy Metering	Required
Y			Prereq	Fundamental Refrigerant Management	Required
4	2	0	Credit	Enhanced Commissioning	6
9	0	9	Credit	Optimize Energy Performance	18
1	0	0	Credit	Advanced Energy Metering	1
0	2	0	Credit	Demand Response	2
0	3	0	Credit	Renewable Energy Production	3
0	1	0	Credit	Enhanced Refrigerant Management	1
0	2	0	Credit	Green Power and Carbon Offsets	2

6 5 2 Materials and Resources 13

Y			Prereq	Storage and Collection of Recyclables	Required
Y			Prereq	Construction and Demolition Waste Management Planning	Required
0	3	2	Credit	Building Life-Cycle Impact Reduction	5
1	1	0	Credit	Building Product Disclosure and Optimization - Environmental Product Declarations	2
1	1	0	Credit	Building Product Disclosure and Optimization - Sourcing of Raw Materials	2
2	0	0	Credit	Building Product Disclosure and Optimization - Material Ingredients	2
2	0	0	Credit	Construction and Demolition Waste Management	2

12 1 3 Indoor Environmental Quality 16

Y			Prereq	Minimum Indoor Air Quality Performance	Required
Y			Prereq	Environmental Tobacco Smoke Control	Required
2	0	0	Credit	Enhanced Indoor Air Quality Strategies	2
3	0	0	Credit	Low-Emitting Materials	3
1	0	0	Credit	Construction Indoor Air Quality Management Plan	1
1	0	1	Credit	Indoor Air Quality Assessment	2
1	0	0	Credit	Thermal Comfort	1
2	0	0	Credit	Interior Lighting	2
2	1	0	Credit	Daylight	3
0	0	1	Credit	Quality Views	1
0	0	1	Credit	Acoustic Performance	1

6 0 0 Innovation 6

5	0	0	Credit	Innovation	5
1	0	0	Credit	LEED Accredited Professional	1

3 1 0 Regional Priority 4

1	0	0	Credit	Regional Priority : WEc Outdoor water use reduction	1
1	0	0	Credit	Regional Priority : MRc Building product disclosure and optimization - sourcing of ra	1
1	0	0	Credit	Regional Priority : EQ Enhanced indoor air quality strategies	1
0	1	0	Credit	Regional Priority : SSc Site development - protect or restore	1

53 25 47 TOTALS Possible Points: **110**

Certified: 40 to 49 points, Silver: 50 to 59 points, Gold: 60 to 79 points, Platinum: 80 to 110

PUBLIC ART

Highlights

1% of Construction value will be used for public art

- Meeting on 9/24 to begin this process

An architectural rendering of the Northfield Ice Arena building, featuring a modern design with vertical corrugated metal siding and large glass openings. The scene is overlaid with a semi-transparent green filter. In the foreground, a paved area with a double line is visible. Two figures are sketched near the entrance on the left, one standing and one sitting on a bench. The background shows trees and a clear sky.

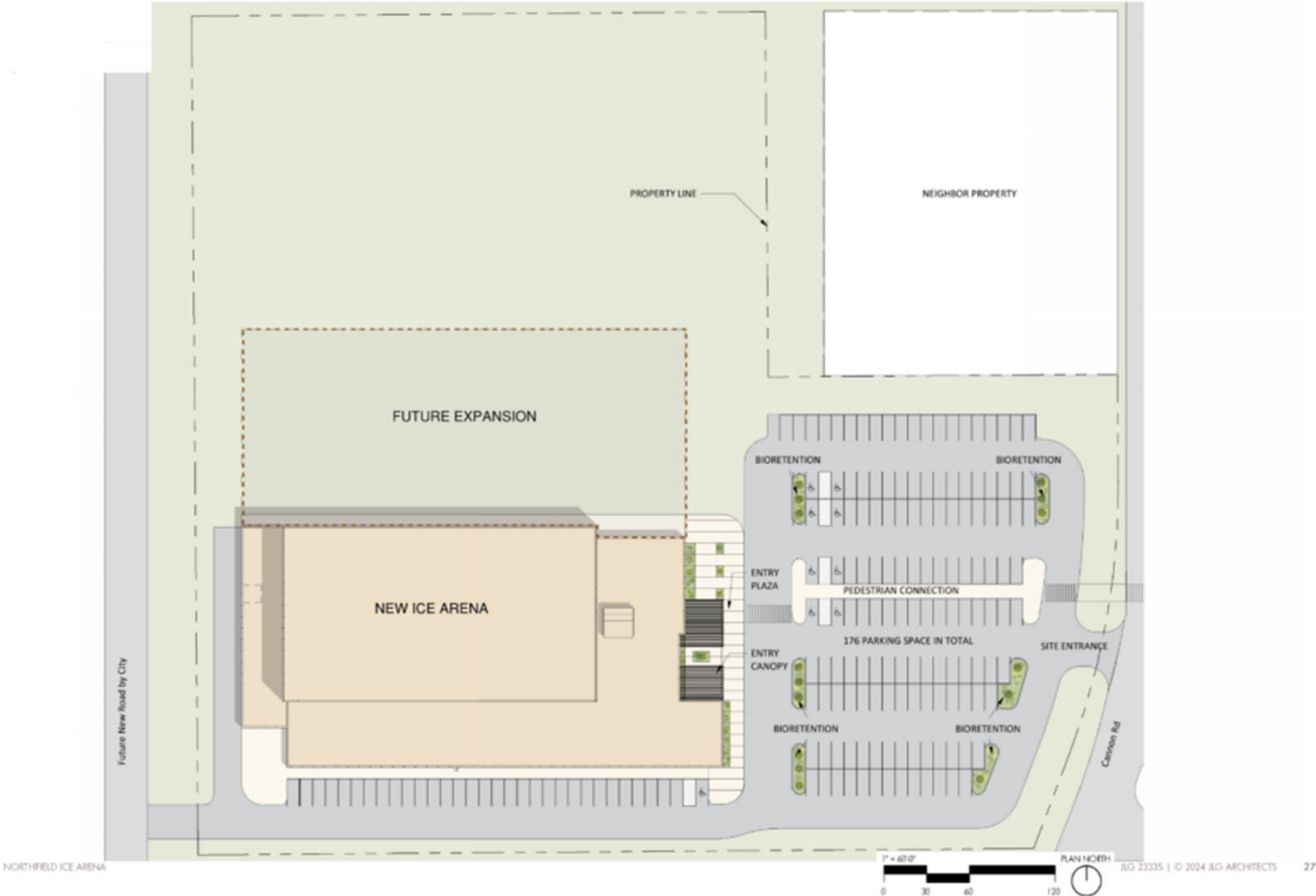
PLANS

NORTHFIELD ICE ARENA
NORTHFIELD, MINNESOTA

Site Plan

Approx. 7 Acres

177 Parking spaces

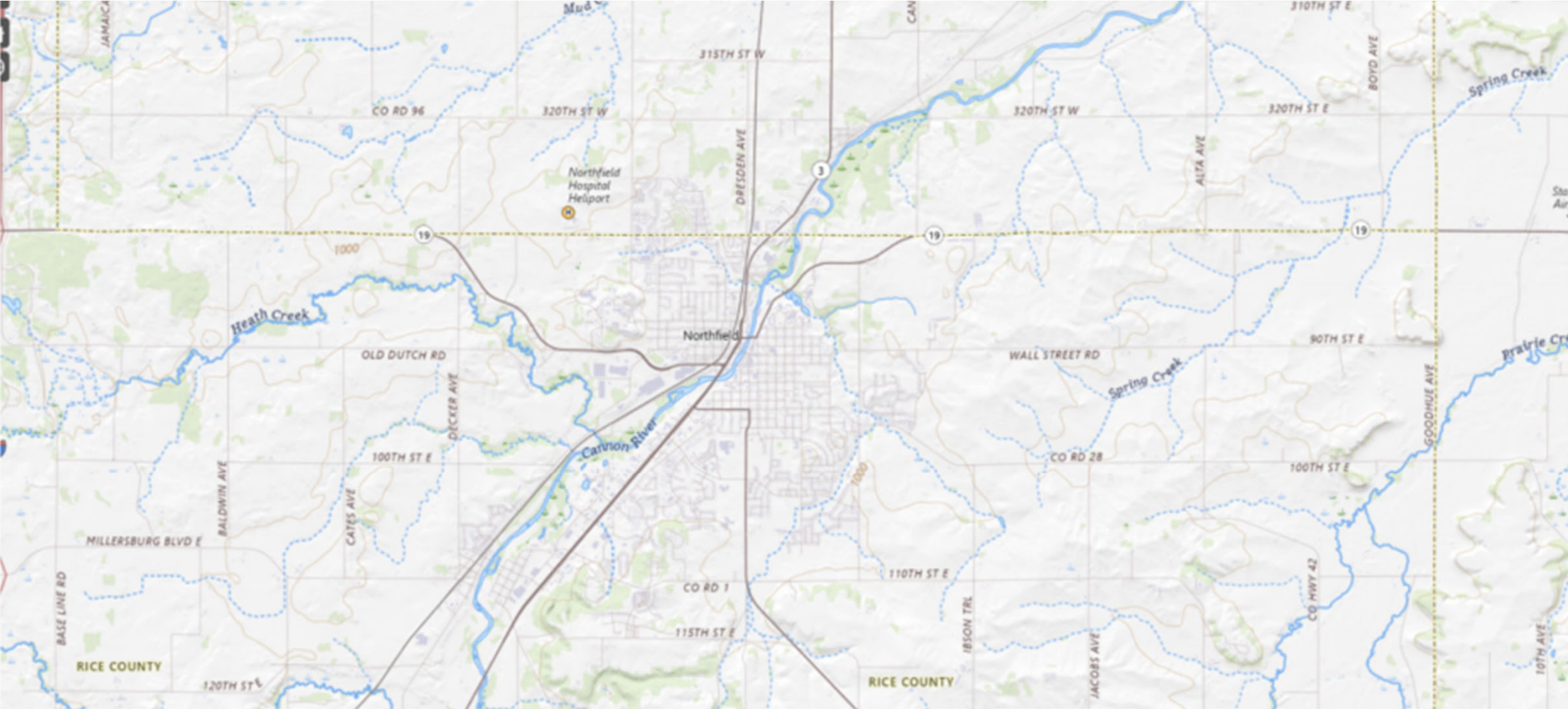


An architectural rendering of the Northfield Ice Arena exterior design options. The image shows a long, low-profile building with a corrugated metal facade and a flat roof. The building is set in a snowy environment with trees and a clear sky. Two figures are visible near the entrance on the left. The text "EXTERIOR DESIGN OPTIONS" is overlaid in large white letters, with "NORTHFIELD ICE ARENA" and "NORTHFIELD, MINNESOTA" in smaller white letters below it.

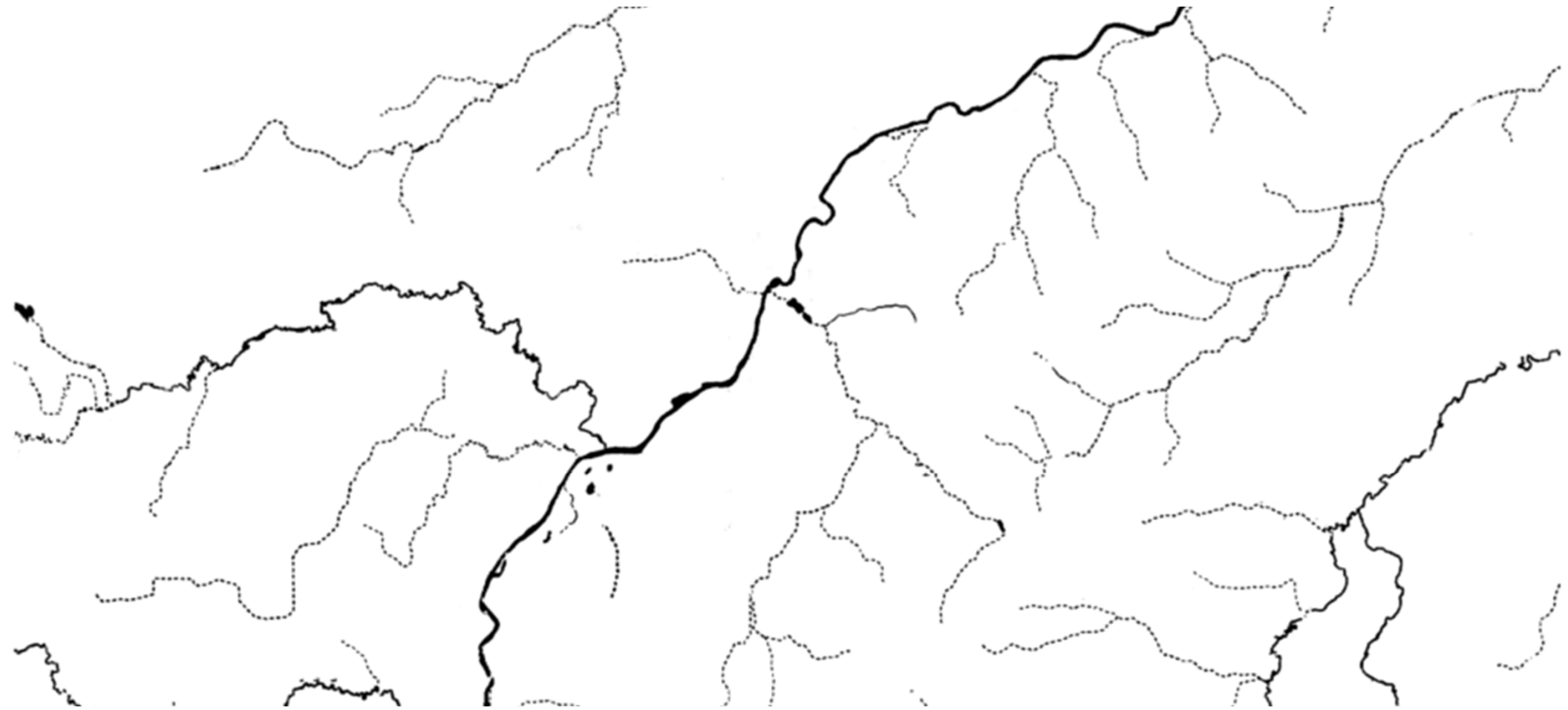
EXTERIOR DESIGN OPTIONS

NORTHFIELD ICE ARENA
NORTHFIELD, MINNESOTA

Cannon River Option



Cannon River Option



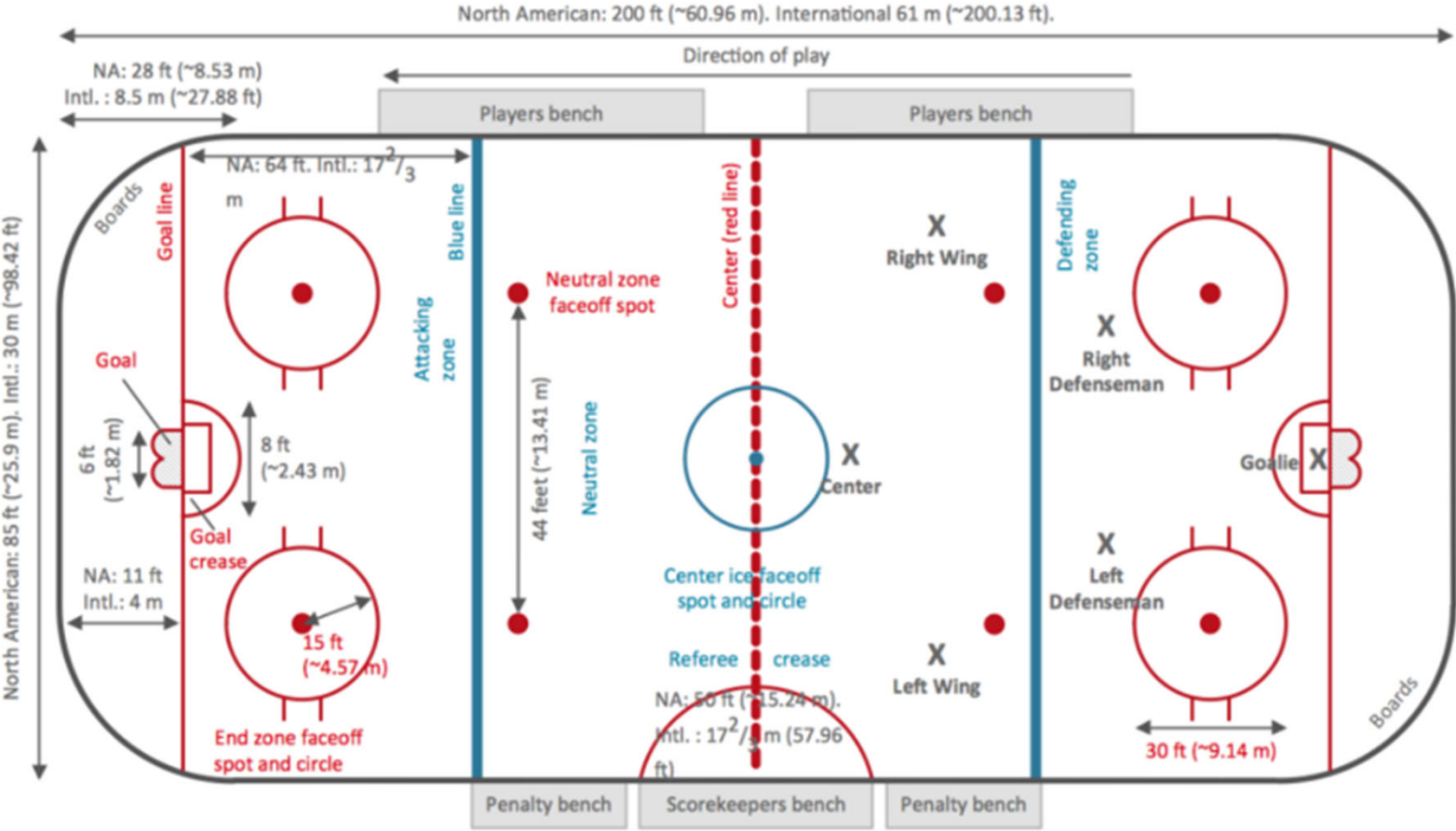
Cannon River Option 1E



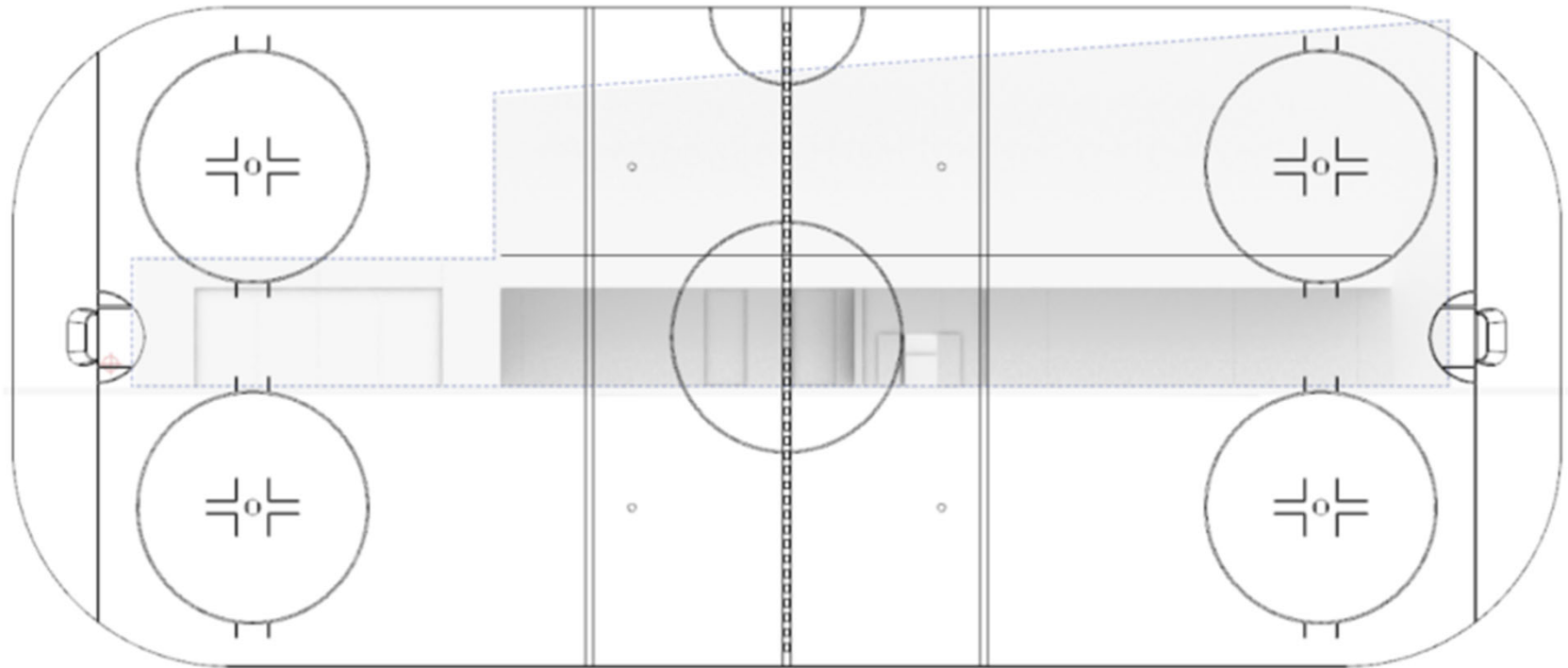
Cannon River Option 1C



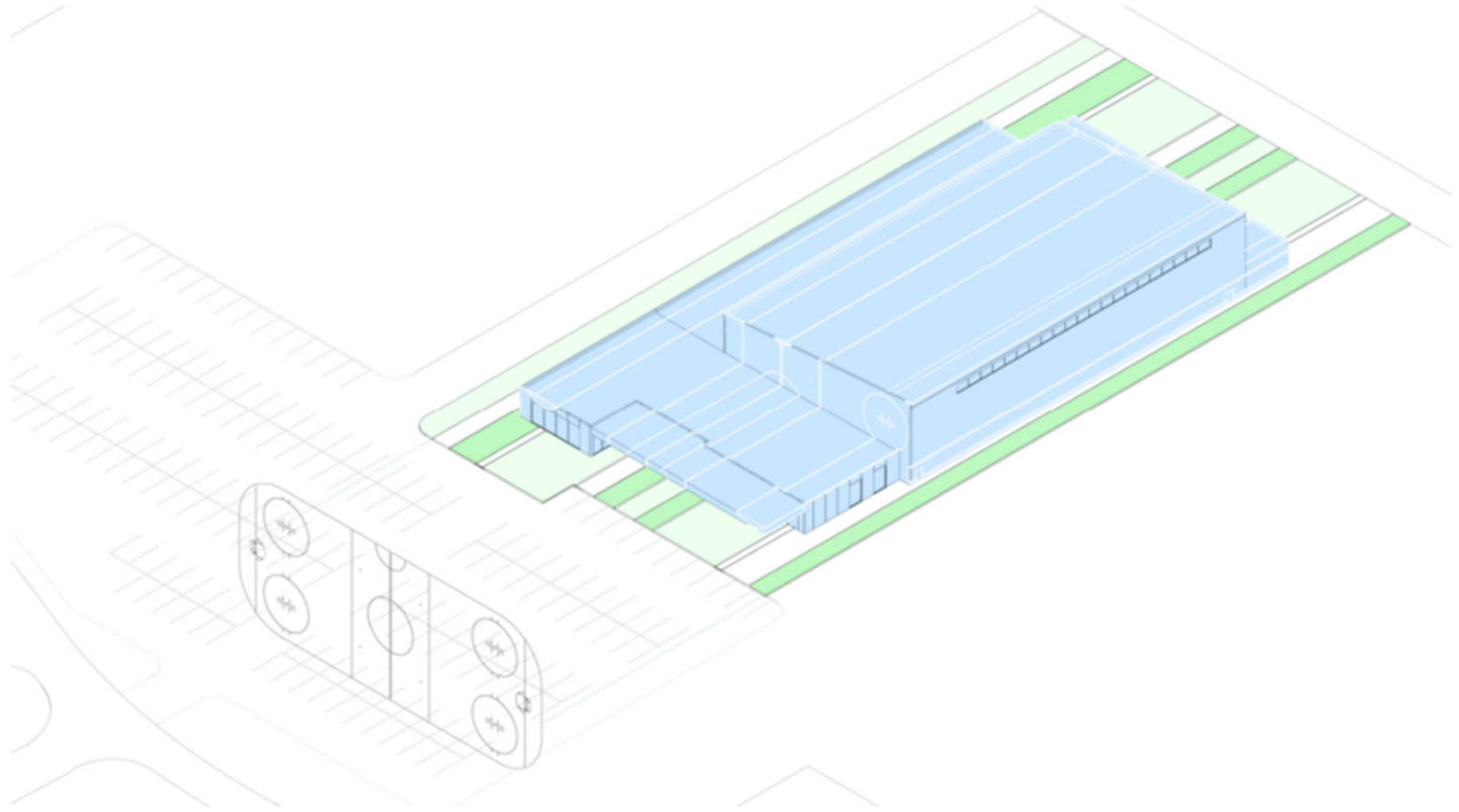
Hockey Rink Projection



Hockey Rink Projection



Hockey Rink Projection



Hockey Rink Projection



YORK-FIELD ICE ARENA



Hockey Rink Projection



Partnership / Schedule Update

New Ice Arena Project Schedule

Tasks/Actions	2023				2024				2025				2026			
	Q1	Q2	Q3	Q4	Q1	Q2	Q3	Q4	Q1	Q2	Q3	Q4	Q1	Q2	Q3	Q4
Architect Updated Cost Estimating for Options																
Sale Terms on Existing Ice Arena																
EDA - Conduit Financing Introduction						22-Apr-24										
School District																
School Board Intorduction on Partnership						22-Apr-24										
School Board Action of Partnership						13-May-24										
Northfield Council - Ice Arena Update						7-May-24										
City of Dundas																
Dundas Council Introduction of Partnership						22-Apr-24										
Dundas Council Action						28-May-24										
Northfield Council - Ice Arena Partnership Update						4-Jun-24										
Northfield Council - Partnership & Contract for Architect						18-Jun-24										
Architect Design Plans																
Issue Construction Manager (CM) RFQ						19-Jul-24										
Northfield Council- Public Hearing & Approve Sale of Ex Arena and Lease							5-Aug-24									
Northfield Council - Site Plan & Bldg Rendering Update							17-Sep-24									
EDA - Conduit Financing Introduction							23-Sep-24									
Northfield Council - Approve Land Donation									1-Oct-24							
Northfield Council - Approve CM Contract									1-Oct-24							
School Board 20-Year Partnership Agreement									14-Oct-24							
City of Dundas 20-Year Partnership Agreement									14-Oct-24							
Northfield Council - Approve Dundas/School Dist. Agreement									15-Oct-24							
Northfield Hockey - Fundraising/Donation Commitments									12-Nov-24							
EDA - Conduit Financing									6-Jan-25							
Ice Arena Construction																
Ice Arena Opens August 2026																

Update September 16, 2024

- City of Northfield
- Northfield School District
- City of Dundas
- Northfield Hockey Association

An architectural rendering of the Northfield Ice Arena, featuring a modern design with vertical corrugated metal siding and large glass openings. The scene is overlaid with a semi-transparent green filter. In the foreground, a person stands near a bench, and another person is seated on the bench. The background shows trees and a clear sky.

THANK YOU!

NORTHFIELD ICE ARENA
NORTHFIELD, MINNESOTA