

**MINNESOTA HISTORY / ARCHITECTURE INVENTORY FORM
NORTHFIELD COMMERCIAL HISTORIC DISTRICT
Northfield, Rice County, Minnesota**

PROPERTY LOCATION	
Property Name: Northfield News 2	Inventory No.: RC-NFC- 385
Address: 113-115 5th Street W., Northfield, MN	PIN: 2201100012 and 2201100013
QTR/QTR/T/R/S: NE NE Section 1 T111N R20W	
USGS Quad: Northfield, Minnesota	
UTM Z 15 4871863E, 4922396N NAD 83	

PROPERTY INFORMATION	
Construction Date: 1950 (west) 1920 (central) 1950 (east)	Style: Commercial Style/Boomtown
Historic Use: commercial	Current Use: commercial
Property Type: commercial	Historic Context: "Commerce, 1856-1945)
Architect/Builder	Survey Name: Northfield Historic District Survey Revision Project, 2016
Previous NRHP Status: Not evaluated	NRHP Recommendation: Non-contributing to Northfield Commercial Historic District
Form Prepared by: Landscape Research LLC	Survey Date: 3/2016



2016, looking southeast

Description

This property, addressed as 113-115 5th Street W., faces north on W. 5th Street. Situated mid-block between S. Water and Division Streets on a sloping site, the historic (1920) central building has been rehabilitated for use as the Northfield News office. The three-building complex is comprised of a central, gable-roofed concrete block structure with a brick "boom-town" front and stepped parapet. It is flanked by an arched-roofed wing at the east, and a flat-roofed wing at the west. It has a center entry with double-leaf doors, a transom and sidelights. Two large display windows also have large multi-paned transoms.

History

The central building dates from ca. 1920 and is labeled as a garage on Sanborn maps. The flanking wings date from ca. 1950. Other previous uses of this building included a bowling alley and restaurant.

Evaluation

This building was not included in the Northfield Commercial Historic District (1979). It was evaluated using National Register of Historic Places criteria (National Register Bulletin 15).

MINNESOTA HISTORY / ARCHITECTURE INVENTORY FORM
NORTHFIELD COMMERCIAL HISTORIC DISTRICT
Northfield, Rice County, Minnesota

Under Criterion A, related to the building's contribution to the city's downtown development, construction of the central building falls within the Northfield "Commerce, 1856-1945" historic context timeframe. The false-front or boomtown façade is typical of those used for garages and other utilitarian structures in the post-automobile era. The central building has been successfully rehabilitated. The flanking wings date from ca. 1950. Under Criterion C, the buildings do not embody the distinctive characteristics of a type, period, or method of construction, represent the work of a master, or possess high artistic values. Because of the size of the flanking structures dating from the 1950s, overall integrity is fair and the complex is recommended as not contributing to the Northfield Commercial Historic District.

References

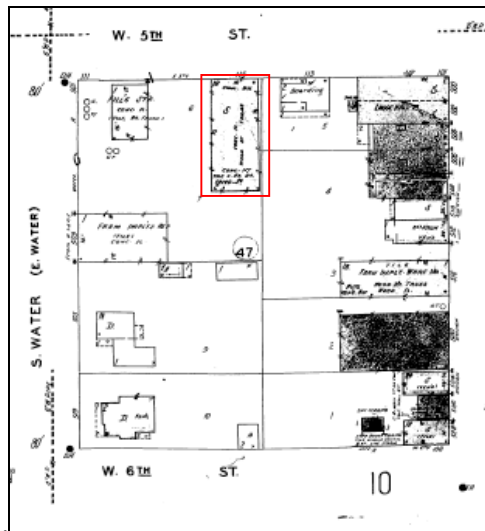
Edwins, Steve, ed. *Northfield Downtown Guidebook*. Northfield Heritage Preservation Commission, 1982.

"Northfield Historic District," National Register of Historic Places Nomination, 1979.

Northfield Historical Society. Photograph and research files. Northfield, Minnesota.

Sanborn Map & Publishing Company, New York. Northfield plates, 1886-1943.

Zellie, Carole. "Northfield Heritage Preservation Plan." Prepared for the Northfield Heritage Preservation Commission, Northfield, Minn. by Landscape Research, 1992



Sanborn Map and Publishing Co., 1930, updated to 1943. Before additions.



USGS: Northfield 1984.