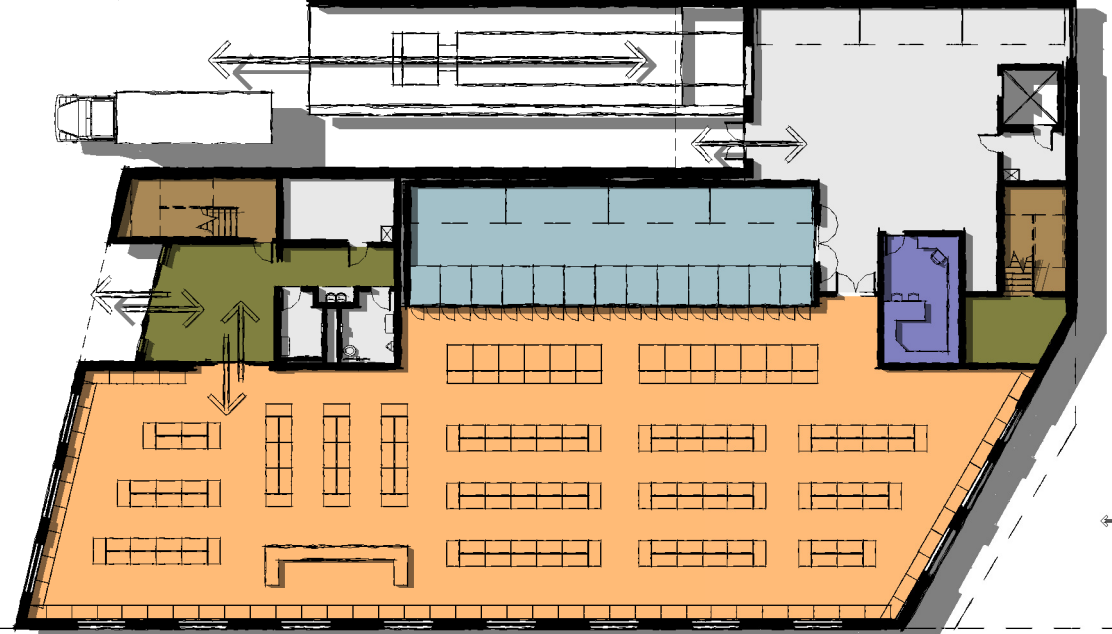
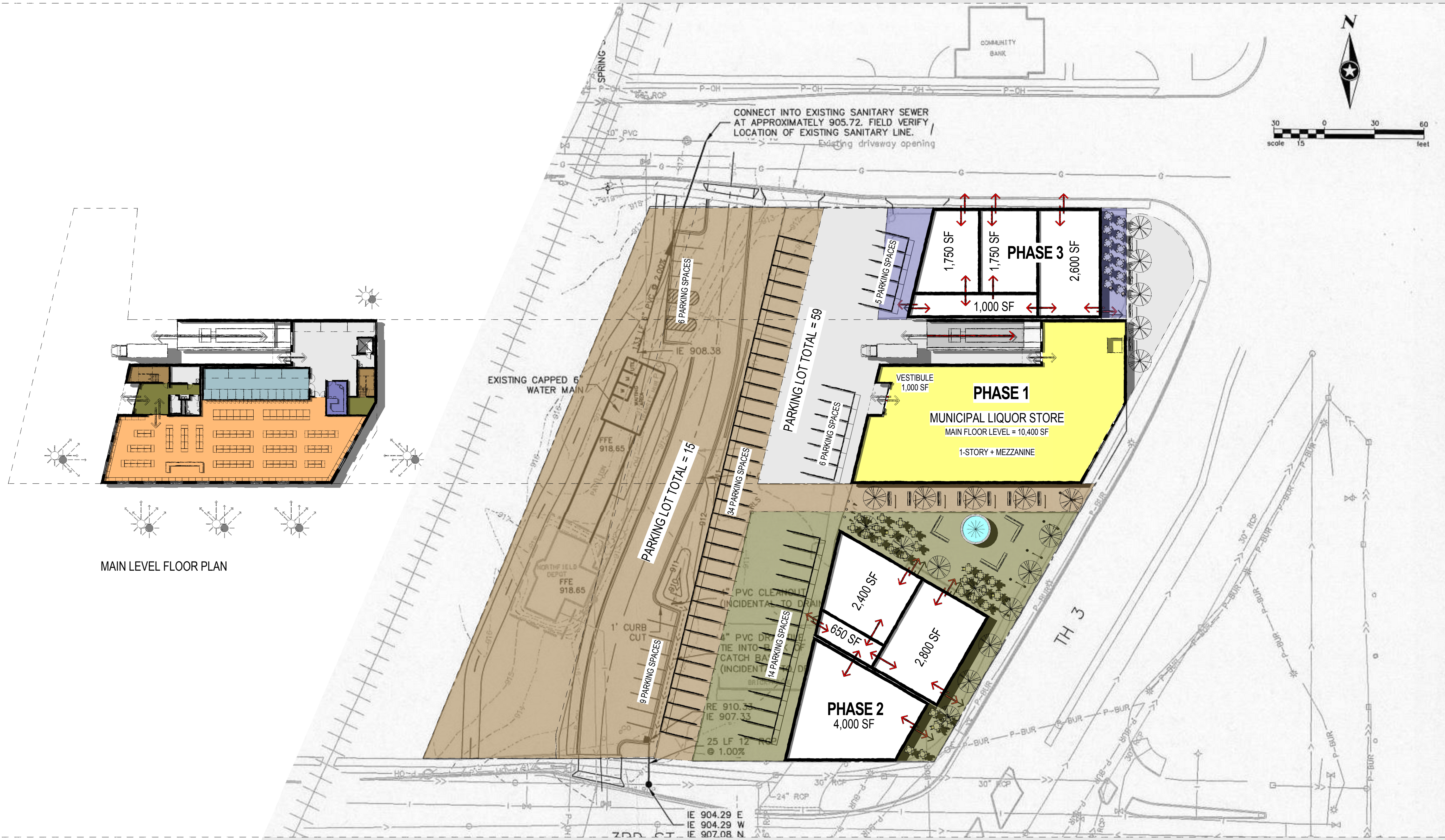


OPTION 3 - Q-BLOCK SITE



MAIN LEVEL FLOOR PLAN

PROJECT NO. 05161283

CITY OF NORTHFIELD NEW MUNICIPAL LIQUOR STORE

PARKING LOT TOTAL (BUILDINGS) = 59
 PARKING LOT TOTAL (DEPOT) = 15
 PARKING TOTAL = 74



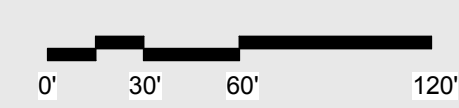
OPTION 3 - Q-BLOCK SITE (PARKING)



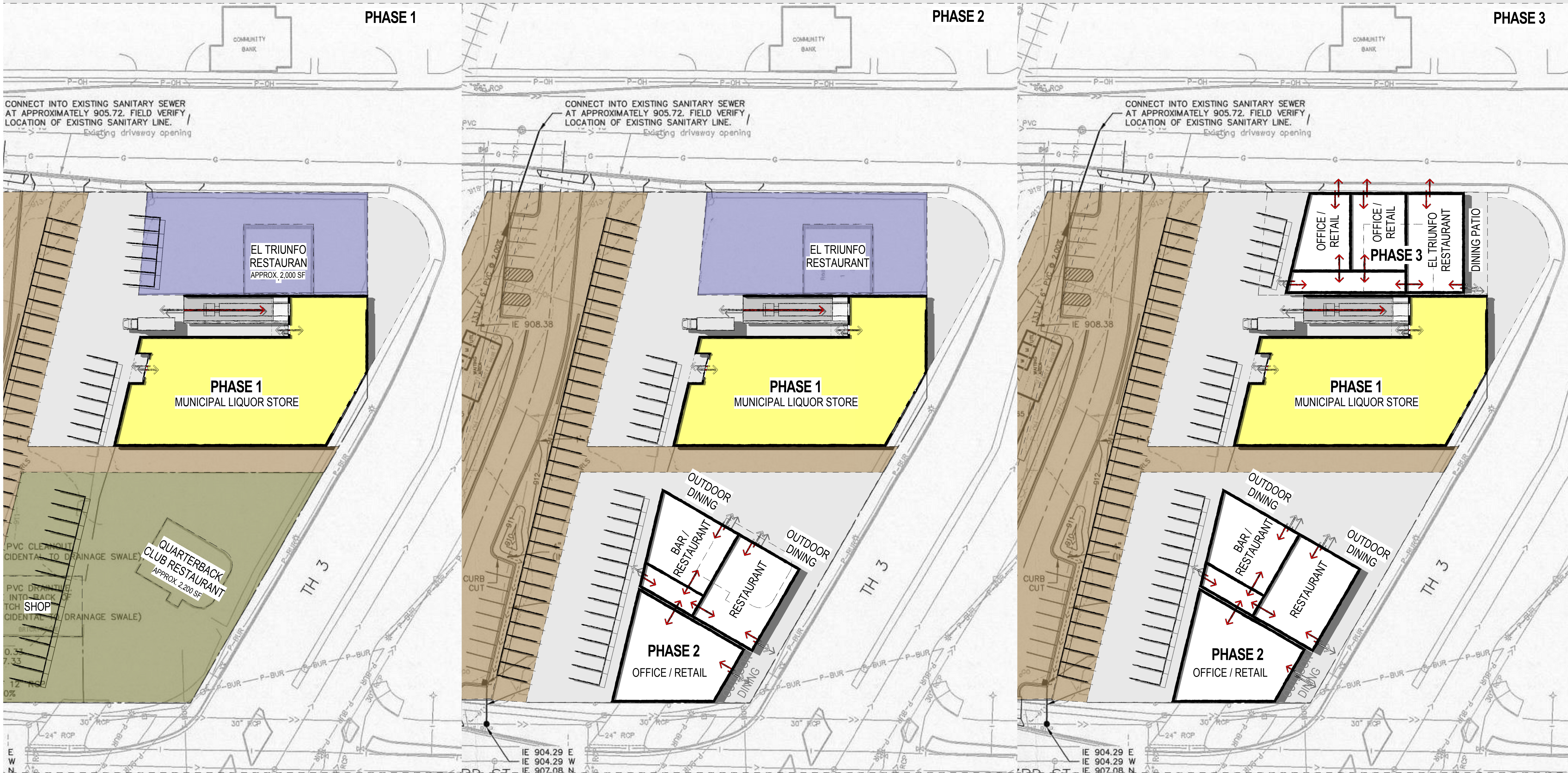
PROJECT NO. 05161283

PARKING TOTAL = 340

CITY OF NORTHFIELD NEW MUNICIPAL LIQUOR STORE



OPTION 3 - Q-BLOCK SITE (PHASING DIAGRAMS)

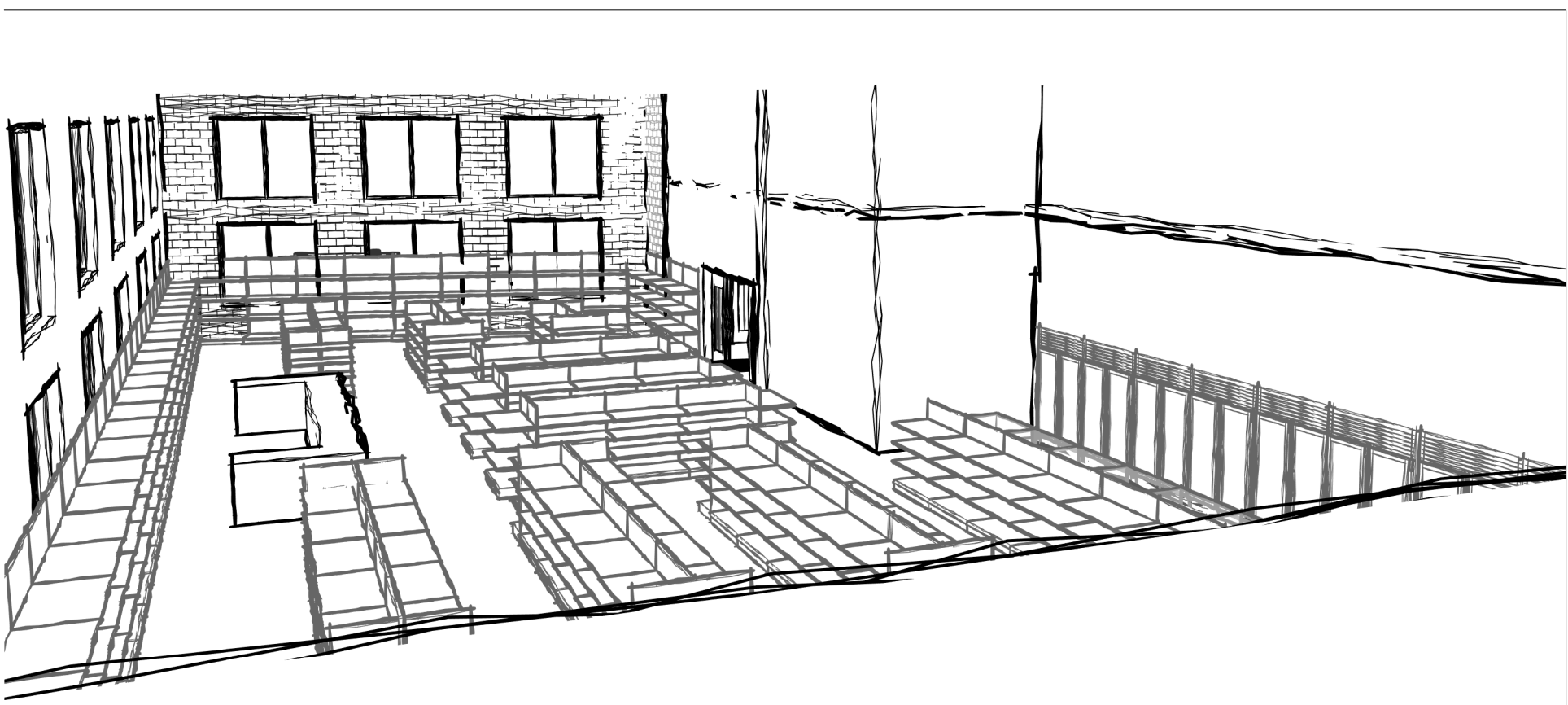


PROJECT NO. 05161283

CITY OF NORTHFIELD NEW MUNICIPAL LIQUOR STORE

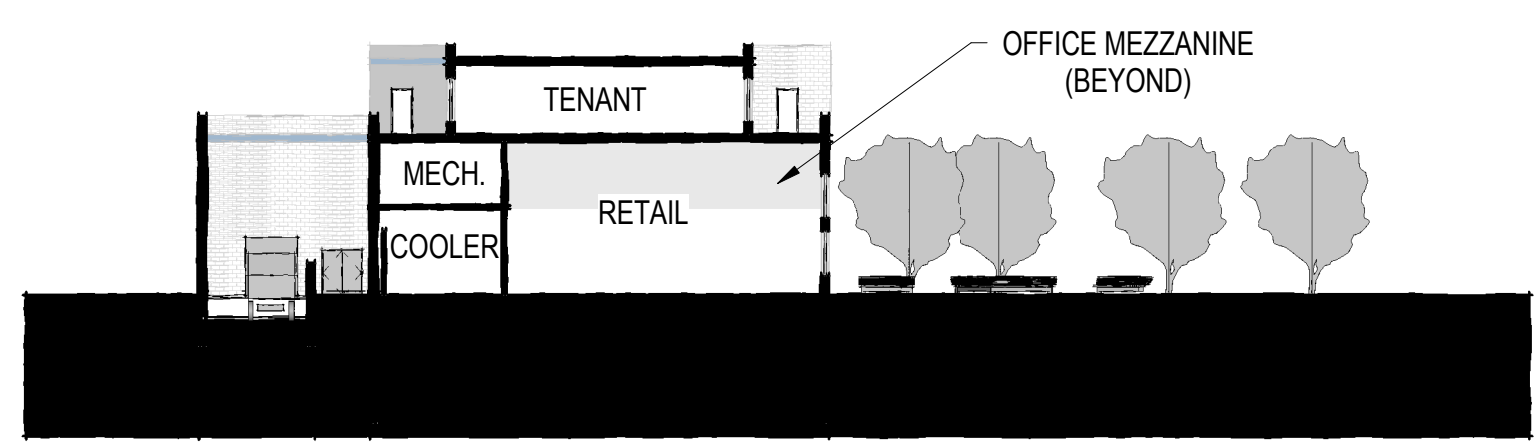


OPTION 3 - Q-BLOCK SITE (THREE PHASES)

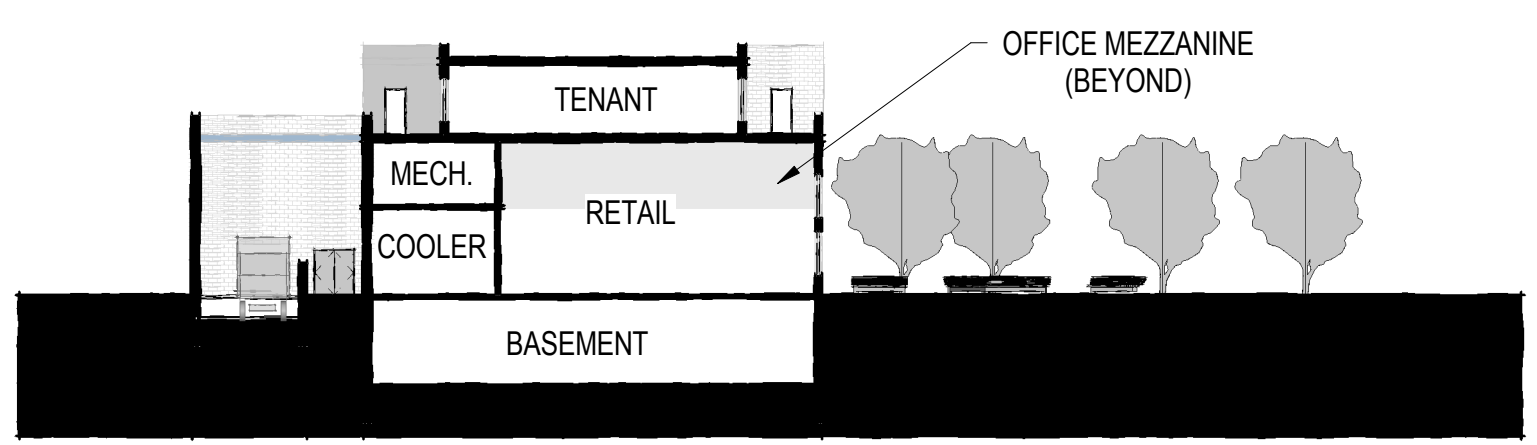


VIEW from OFFICE MEZZANINE onto RETAIL FLOOR

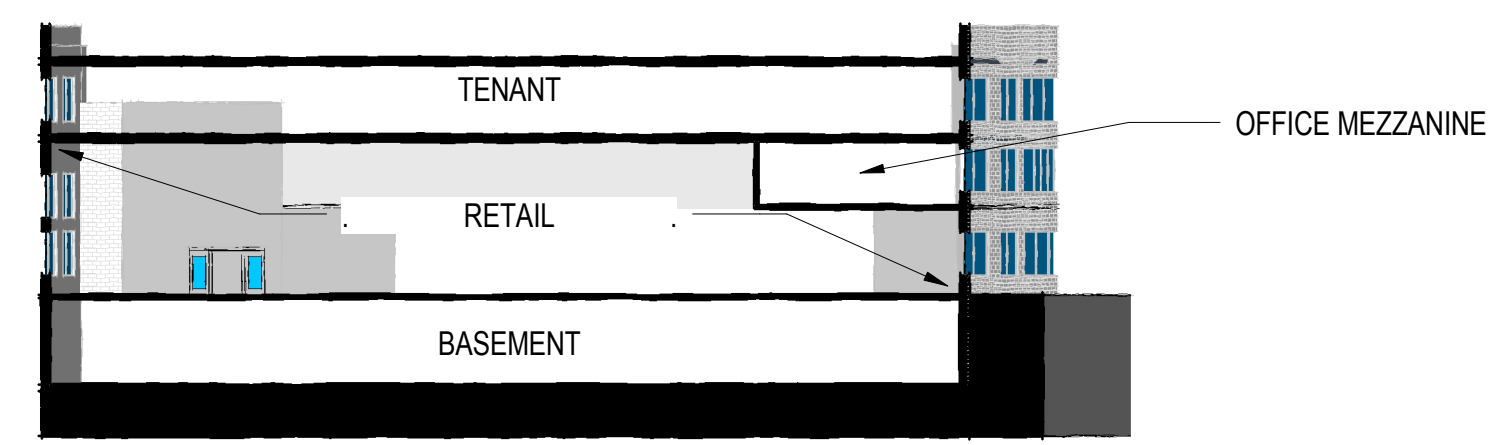
OPTION 3, "THREE PHASES"



2-STORY



2-STORY with FULL BASEMENT



EAST-WEST SECTION showing 2-STORY with FULL BASEMENT

PROJECT NO. 05161283

CITY OF NORTHFIELD NEW MUNICIPAL LIQUOR STORE

