

EXHIBIT A

SCOPE OF WORK

New construction as specified in the attached and incorporated documents.



EAST MATERIAL PERCENTAGE:

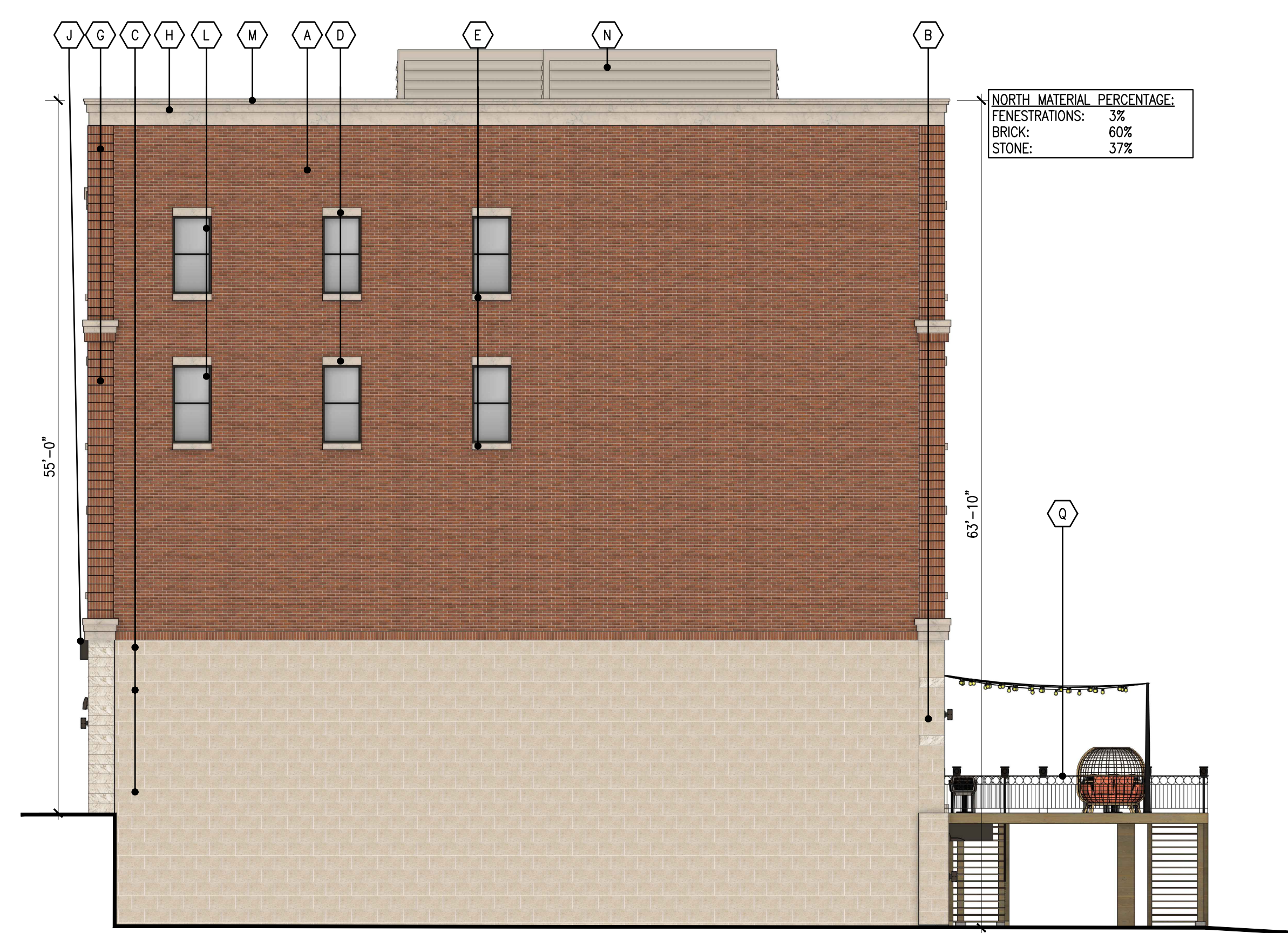
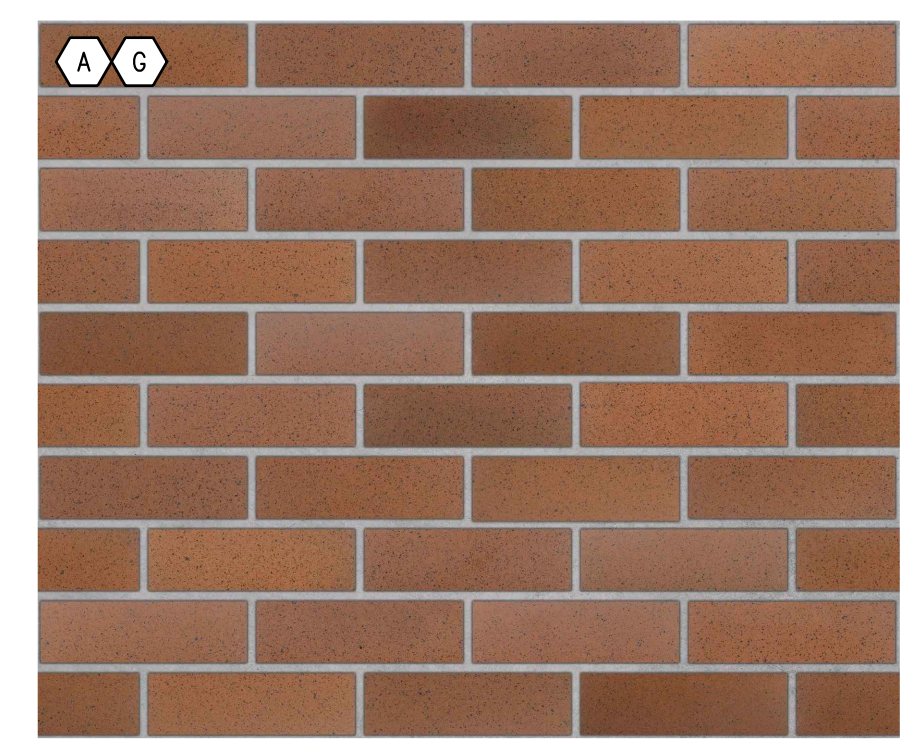
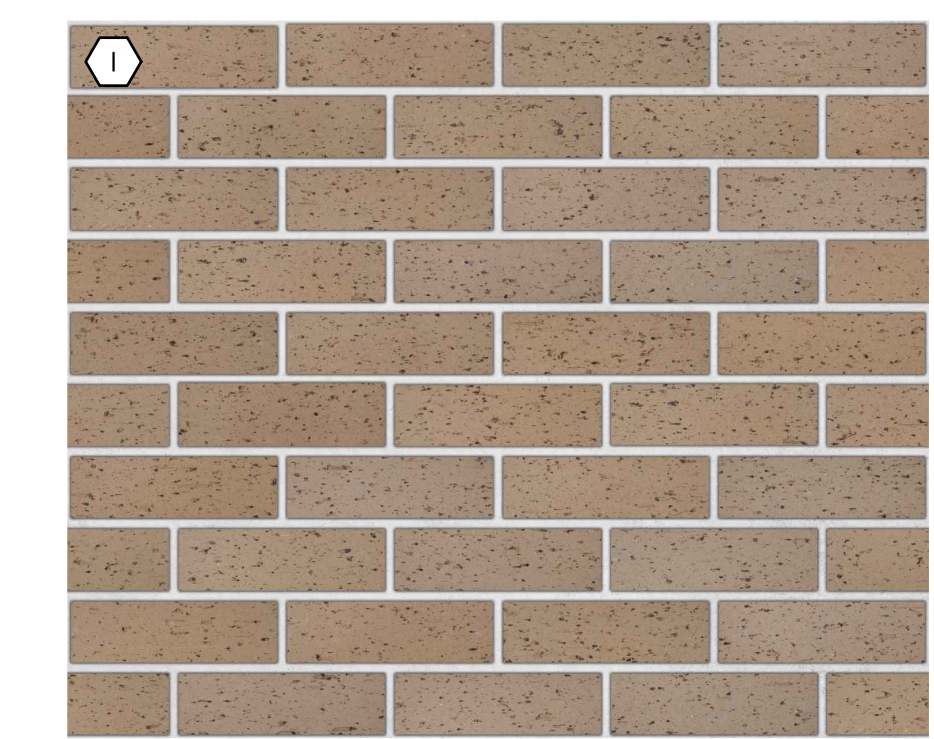
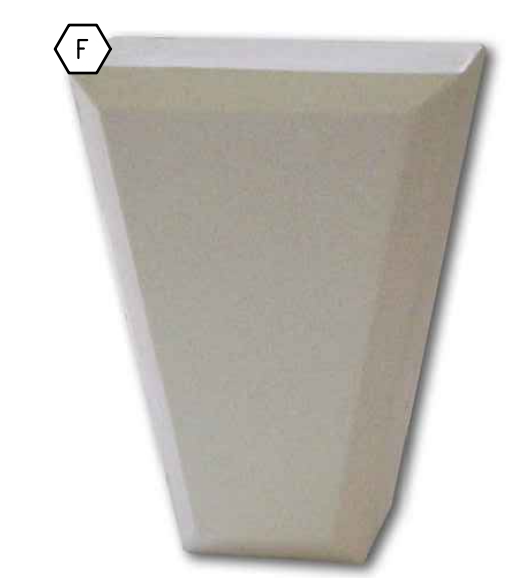
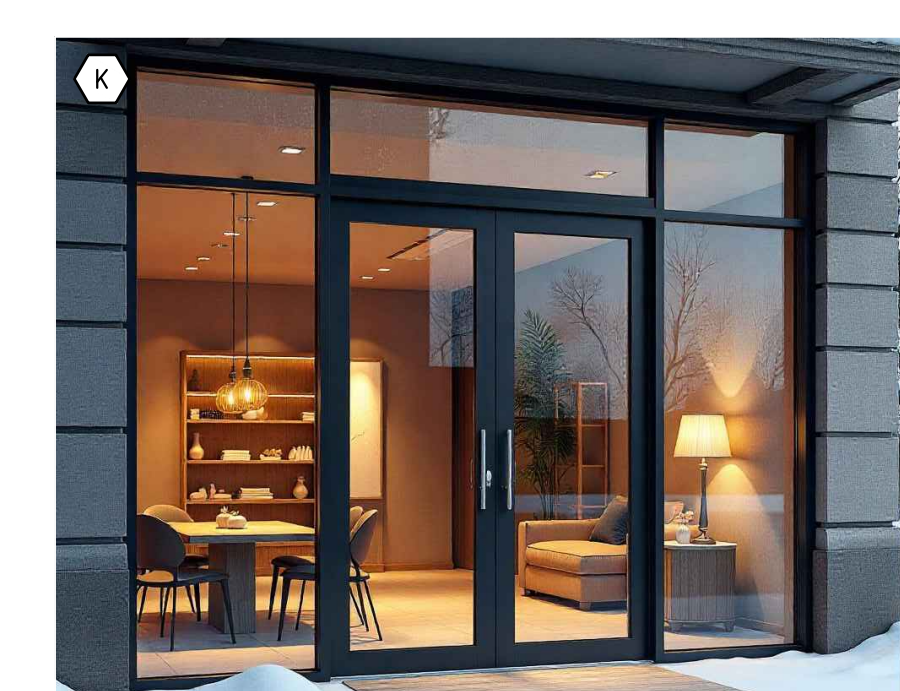
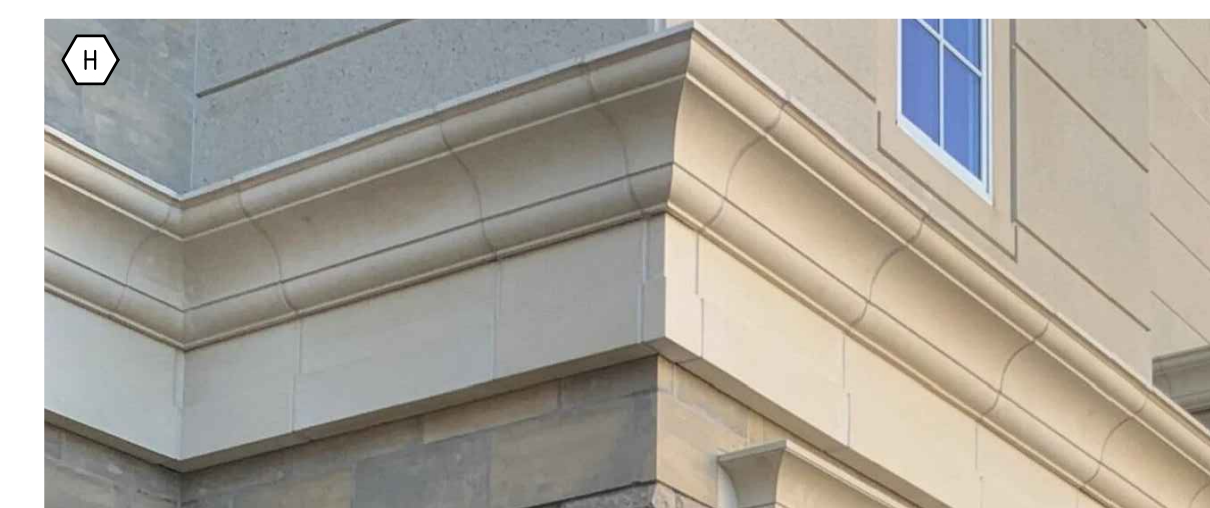
FENESTRATIONS:	26%
BRICK:	43%
STONE:	31%

MATERIAL KEYNOTES

A THIN BRICK #1: MANUF: ENDICOTT PRODUCT: THIN BRICK COLOR: DESERT IRONSPOT DARK FINISH: SMOOTH	J ALUMINUM COMPOSITE MATERIAL EYEBROW: MANUF: ARCONIC PRODUCT: REYNOLDBOND COLOR: DEAP BLACK
B CULTURED STONE: MANUF: CORONADO PRODUCT: CLASSIC SERIES FINISH: SMOOTH LIMESTONE COLOR: CREAM	K ALUMINUM STOREFRONT SYSTEM: MANUF: OLDCASTLE (OR EQUAL) PRODUCT: SERIES 3000XT COLOR: BLACK
C CULTURED STONE BAND: MANUF: CORONADO PRODUCT: DESIGNER SERIES FINISH: SPLIT LIMESTONE COLOR: CREAM	L SINGLE HUNG WINDOW: MANUF: ANDERSEN PRODUCT: 100 SERIES COLOR: BLACK
D 8" PRECAST LINTEL: MANUF: ARRISCRAFT PRODUCT: CAMBRIDGE SILL COLOR: LIMESTONE FINISH: TBD	M PREFINISHED METAL CAP FLASHING: MANUF: CMG (OR EQUAL) COLOR: SANDSTONE
E 6" PRECAST LINTEL: MANUF: ARRISCRAFT PRODUCT: CAMBRIDGE SILL COLOR: LIMESTONE FINISH: TBD	N MECHANICAL SCREEN: MANUF: ENVISOR (OR EQUAL) PRODUCT: HORIZONTAL RIB COLOR: PUTTY
F ARCHED BRICK EYEBROW W/KEYSTONE: MANUF: ARRISCRAFT PRODUCT: ARRIS-CAST KEYSTONE COLOR: LIMESTONE FINISH: TBD	O INSULATED OVERHEAD GARAGE DOOR: MANUF: MIDLAND (OR EQUAL) COLOR: BLACK
G THIN BRICK #1 SOLIDER COURSE QUOINS: MANUF: ENDICOTT PRODUCT: THIN BRICK COLOR: DESERT IRONSPOT DARK FINISH: SMOOTH	P LIGHT FIXTURES: (SEE SITE LIGHTING PLAN) MANUF: TBD COLOR: BLACK
H PRECAST CORNICE: MANUF: ARRISCRAFT PRODUCT: ARRIS-CAST COLOR: LIMESTONE FINISH: TBD PROFILE: TBD	Q DECK SYSTEM: RAILING: BLACK SUBSTRUCTURE: BROWN TREATED DECKING: TREX (OR EQUAL)
I THIN BRICK #2: MANUF: ENDICOTT PRODUCT: THIN BRICK COLOR: LIGHT SANDSTONE FINISH: VELOUR	

1 EAST ELEVATION
A301

SCALE: 1/8" = 1'-0"



NORTH MATERIAL PERCENTAGE:

FENESTRATIONS:	3%
BRICK:	60%
STONE:	37%

2 NORTH ELEVATION
A301

SCALE: 1/8" = 1'-0"

ISSUES / REVISIONS:

SITE PLAN REVIEW	04.20.2026
HFC REVIEW	05.22.2026

I HEREBY CERTIFY THAT THIS PLAN, SPECIFICATION, OR REPORT WAS PREPARED BY ME OR UNDER MY DIRECT SUPERVISION AND THAT I AM A DULY LICENSED LANDSCAPE ARCHITECT UNDER THE LAWS OF THE STATE OF MINNESOTA.

SIGNATURE: NOT FOR CONSTRUCTION JOSHUA D. WILDT
 Expiration: 06-30-2026

License #: 57650
 Date: 04-20-2026

PROJECT MANAGER
 JOSH
 DRAWN BY
 L + J

PROJECT NAME

ARCHER HOUSE

NORTHFIELD
 MINNESOTA

ISSUE LOG

04-20-2026 SUBMITTAL

PROJECT NUMBER

SHEET TITLE

LANDSCAPE PLAN

SHEET NUMBER

L101

LANDSCAPE PLANT LEGEND

DECIDUOUS TREES

RB	2	RIVER BIRCH <i>Betula nigra</i>	MULTI STEM	B&B	40'H x 30'W
PH	3	PRAIRIE HORIZON ALDER <i>Ainus hirsuta 'Harbin'</i>	2" CAL.	B&B	35'H x 25'W
GM	7	ARMSTRONG GOLD MAPLE <i>Acer rubrum 'JFS-KW78'</i>	2" CAL.	B&B	40'H x 12'W

EVERGREEN TREES

CM	5	COLUMNAR TANNENBAUM <i>Pinus mugo 'Columnaris'</i>	36" HT	B&B	8'H x 3'W
----	---	--	--------	-----	-----------

SHRUBS

AJ	13	AMBER JUBILEE NINEBARK <i>Physocarpus opulifolius 'Jefam'</i>	#2 CONT.	POT	5'H x 4'W
LL	9	LITTLE LIME HYDRANGEA <i>Hydrangea paniculata 'Jane'</i>	#3 CONT.	POT	5'H x 5'W
BH	6	DWARF BUSH HONEYSUCKLE <i>Diervilla lonicera</i>	#2 CONT.	POT	3'H x 3'W

PERENNIALS

RS	6	RUSSIAN SAGE <i>Salvia yangii</i>	#1 CONT.	POT	4'H x 3'W
SE	12	AUTUMN FIRE <i>Sedum x 'Autumn Fire'</i>	#1 CONT.	POT	1.5'H x 2'W
JW	6	JUNIOR WALKER CATMINT <i>Nepeta faassenii 'Junior Walker'</i>	#1 CONT.	POT	1'H x 2'W

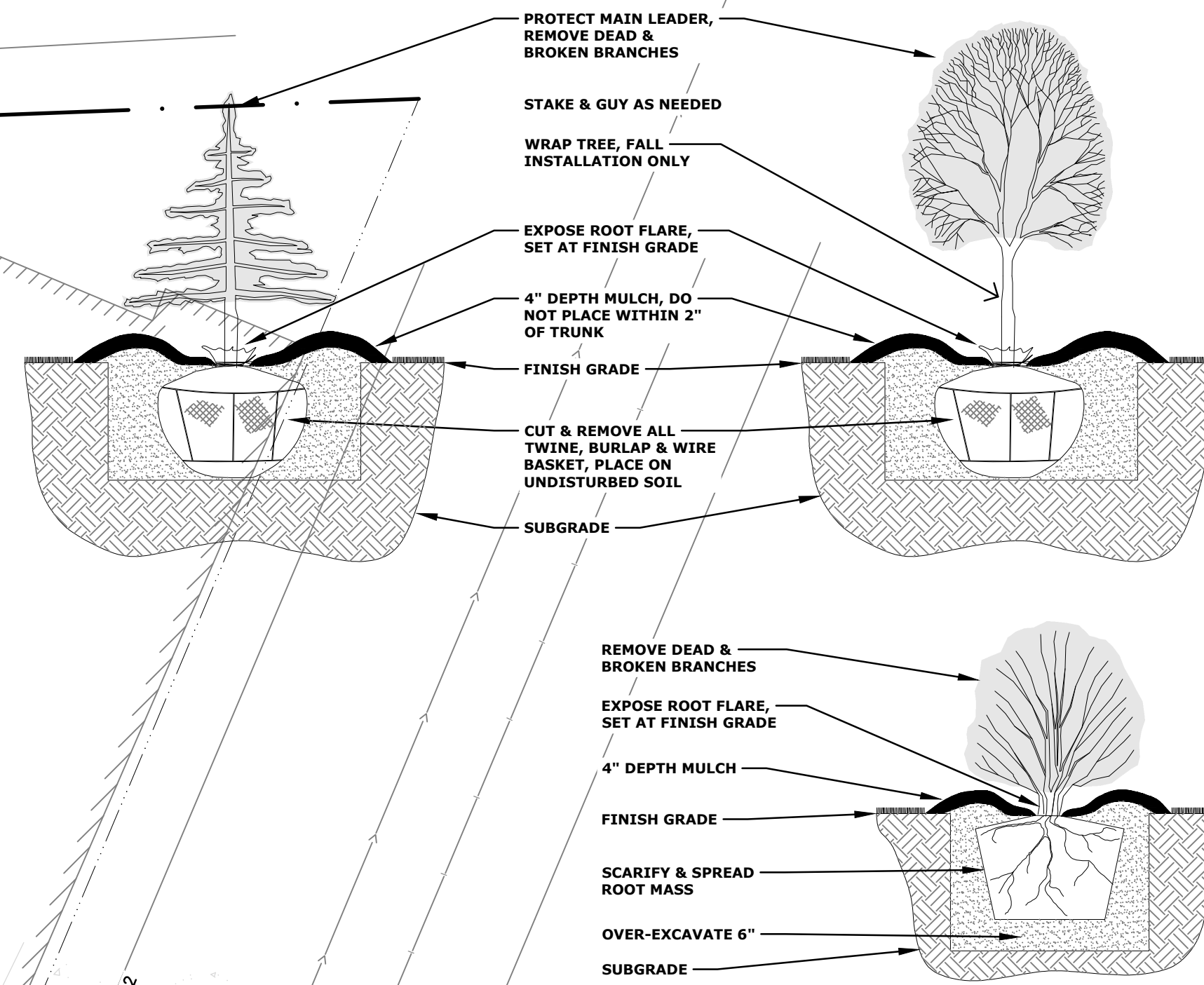
GROUNDCOVER

--SY	MNDOT SEED MIX 25-131 - LOW MAINTENANCE TURF (OR APPROVED ALTERNATE).
--CY	UNDYED HARDWOOD MULCH
--CY	1-1/2" ROCK MULCH
--LF	METAL EDGING

RAIN GARDEN NOTES: NATIVE PLANTS, PLANTING AND TRANSPLANTING

- NATIVE PLANTING NOT TO BEGIN UNTIL PLANTING AREAS HAVE BEEN AMENDED AND PREPARED.
- PLANTING BEDS TO BE FREE FROM ALL WEEDS AND INVASIVE PLANT SPECIES.
- PLANT MATERIAL TO BE SPACED 18" O.C.
- ALL PLANT MATERIAL TO BE THOROUGHLY WATERED UPON INSTALLATION.
- GROUP PLANTINGS, MINIMUM OF 12 PLUGS PER SPECIES GROUPING.

BF	72	BLUE FLAG IRIS <i>Iris versicolor</i>	PLUG
SG	72	SHENANDOAH SWITCH GRASS <i>Panicum virgatum 'Shenandoah'</i>	PLUG
WC	72	WHITE CONEFLOWER <i>Echinacea purpurea alba</i>	PLUG
LB	72	LITTLE BLUE STEM <i>Schizachyrium scoparium</i>	PLUG
PB	72	PRAIRIE BLAZINGSTAR <i>Liatris ligulistylis</i>	PLUG
PC	72	PURPLE CONEFLOWER <i>Echinacea purpurea</i>	PLUG
PD	72	PRAIRIE DROPS EED <i>Sporobolus heterolepis</i>	PLUG
NA	72	NEW ENGLAND ASTER <i>Aster novae-angliae</i>	PLUG
JB	72	JOHNSON'S BLUE GERANIUM <i>Geranium x 'Johnson's Blue'</i>	PLUG
EB	72	ELIJAH BLUE FESCUE <i>Festuca ovina 'Elijah Blue'</i>	PLUG

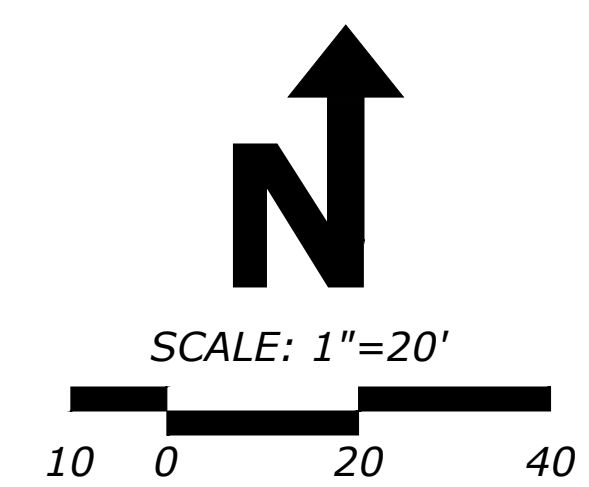
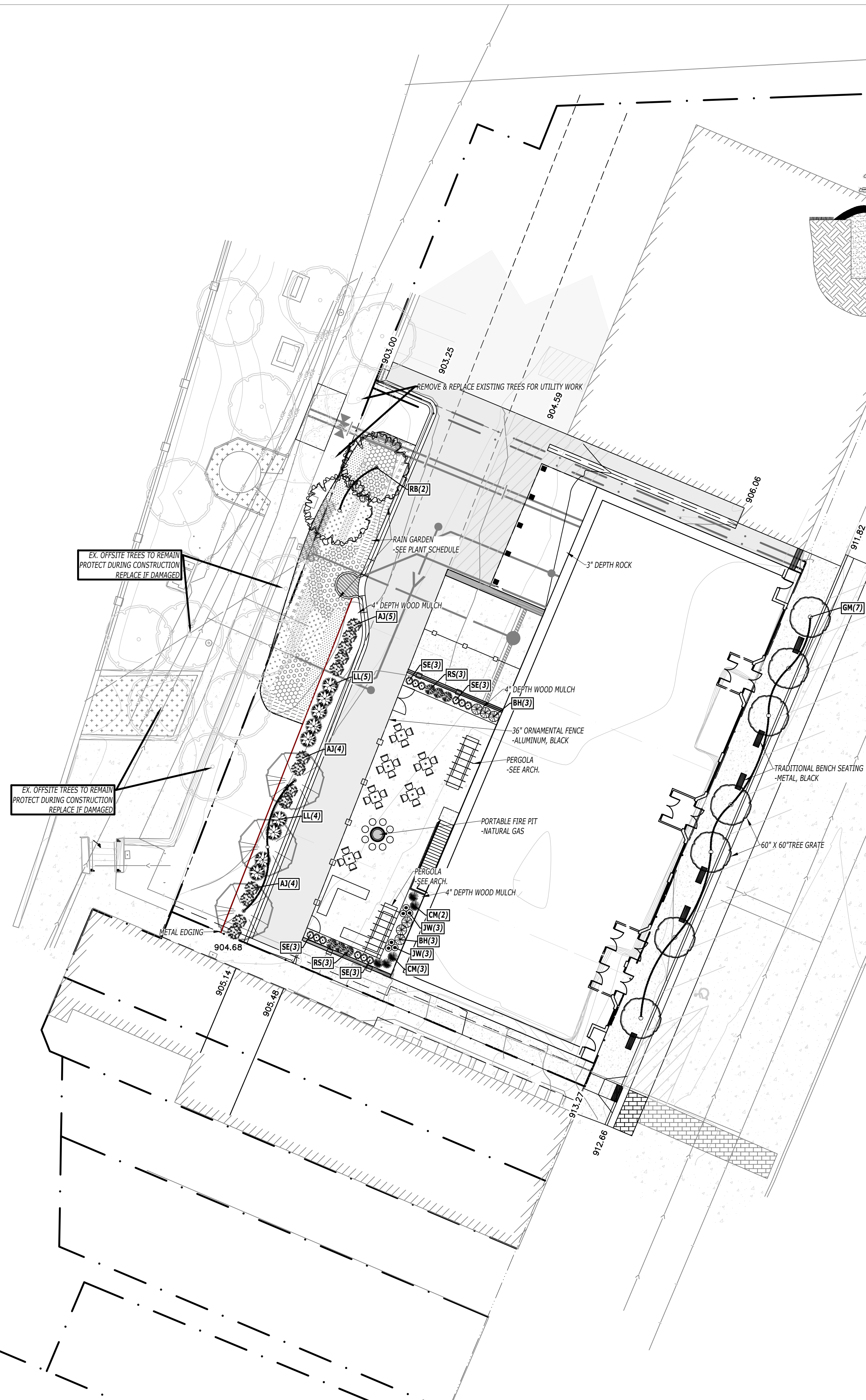


LANDSCAPE REQUIREMENTS

- ONE (1) STREET TREE PER 40' OF FRONTAGE
- 170' OF FRONTAGE = 5 TREES REQUIRED

LANDSCAPE NOTES:

- CONTRACTOR TO HAVE ALL UTILITIES ON SITE VERIFIED AND MARKED BEFORE STARTING WORK.
- CONTRACTOR IS LIABLE FOR ANY DAMAGE TO EXISTING UTILITIES ON SITE AND RESPONSIBLE FOR THE COSTS ASSOCIATED WITH REPAIRING/REPLACING DAMAGE.
- CONTRACTOR IS LIABLE FOR ALL DAMAGE RELATED TO CONTRACTORS ACTIVITY ON SITE AND RESPONSIBLE FOR THE COSTS ASSOCIATED WITH REPAIRING/REPLACING DAMAGE.
- OBTAIN ALL NECESSARY PERMITS FOR PLANTING IN ALL RIGHT-OF-WAY.
- COMPLETE WORK PER OWNERS CONSTRUCTION SCHEDULE AND COORDINATE WORK WITH OTHERS ON SITE.
- PLANT MATERIAL SHALL COMPLY WITH THE AMERICAN ASSOCIATION OF NURSERYMEN STANDARDS AND BE FREE OF DISEASE AND DAMAGE.
- ALL PLANT MATERIALS TO BE WARRANTIED ONE (1) FULL YEAR FROM THE COMPLETION AND ACCEPTANCE BY OWNER, WITH ONE TIME REPLACEMENT.
- WATER AND MAINTAIN ALL PLANT MATERIALS UNTIL ACCEPTED BY OWNER.
- IF THERE IS A DISCREPANCY BETWEEN THE QUANTITY OF PLANTS SHOW ON THE PLAN COMPARED TO THE PLANT LEGEND, THE PLAN TAKES PRECEDENCE.
- ALL AREAS DISTURBED DURING CONSTRUCTION TO RECEIVE 6" OF TOPSOIL AND SOD UNLESS OTHERWISE SPECIFIED ON PLANS.
- VERIFY TOPSOIL DEPTH AND NOTIFY OWNER OF ANY DEFICIENCY.
- REPLACEMENT TOPSOIL SHOULD BE CLEAN, FREE OF DEBRIS, SHARP OBJECTS, ROCKS AND WEEDS.
- ALL AREAS TO BE LANDSCAPED AND SODDED SHALL BE GRADED SMOOTH AND EVEN.
- SOD TO BE A KENTUCKY BLUEGRASS SEED VARIETY.
- NO GUARANTEE ON SOD EXCEPT SOD THAT IS NOT ACCEPTABLE AT TIME OF INSTALLATION.
- STAKE SOD ON SLOPES 3:1 AND GREATER.
- PROVIDE BLANKET ON ALL SEEDED AREAS THAT ARE SLOPED. MULCH APPLICATION FOR ALL OTHER SEEDED AREAS SHALL BE HYDROMULCH OR DISCED STRAW DEPENDING ON SEED TYPE.
- INSTALL BLACK METAL EDGING AROUND ALL PLANTING BEDS AS SHOWN ON PLAN.
- MULCH TO BE FINELY SHREDDED, UNDYED, HARDWOOD ORGANIC MULCH INSTALLED TO 4" DEPTH.
- NO WEED FABRIC BARRIER BENEATH ORGANIC MULCHES.
- TREES SHALL HAVE MULCH PULLED BACK 2" FROM BASE OF TRUNK.
- NO EDGING AROUND TREES OUTSIDE OF SHRUB BEDS.
- ROCK MULCH SHALL BE 1-1/2" DIAMETER WASHED RIVER ROCK INSTALLED TO 3" DEPTH WITH APPROVED WEED FABRIC BARRIER.
- SWEEP AND MAINTAIN ALL PAVEMENT AREAS AFTER LANDSCAPE INSTALLATION IS COMPLETE AND ACCEPTED BY OWNER, DAILY CLEANING TO BE COMPLETED IF REQUIRED BY THE MUNICIPALITY.



I HEREBY CERTIFY THAT THIS PLAN, SPECIFICATION, OR REPORT WAS PREPARED BY ME OR UNDER MY DIRECT SUPERVISION AND THAT I AM A DULY LICENSED LANDSCAPE ARCHITECT UNDER THE LAWS OF THE STATE OF MINNESOTA.

SIGNATURE: NOT FOR CONSTRUCTION
 JOSHUA D. WILDT
 Expiration: 06-30-2026

License #: 57650
 Date: 04-20-2026

PROJECT MANAGER
JOSH

DRAWN BY
L + J

PROJECT NAME
ARCHER HOUSE

NORTHFIELD
MINNESOTA

ISSUE LOG
 04-20-2026 SUBMITAL

PROJECT NUMBER

SHEET TITLE

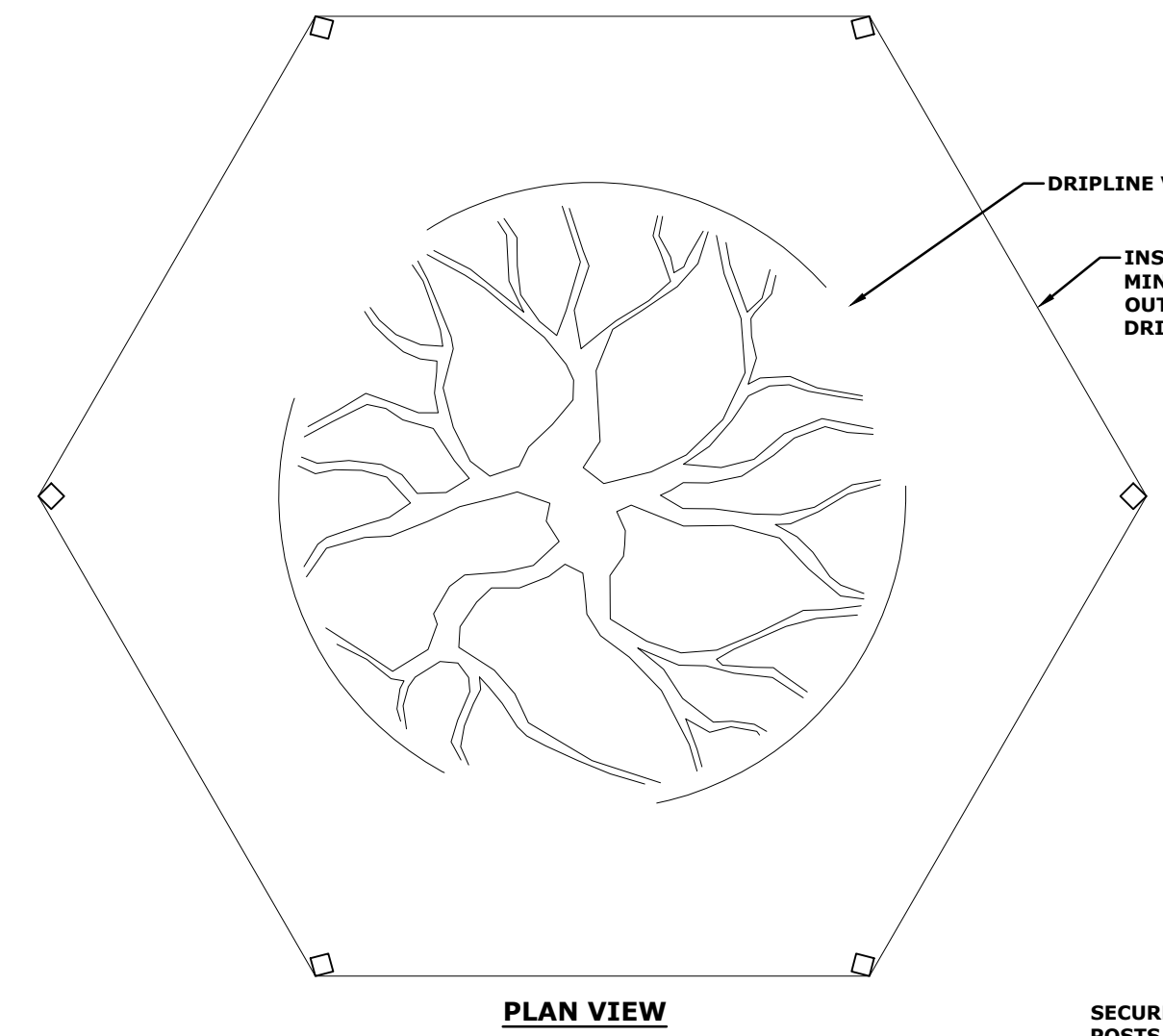
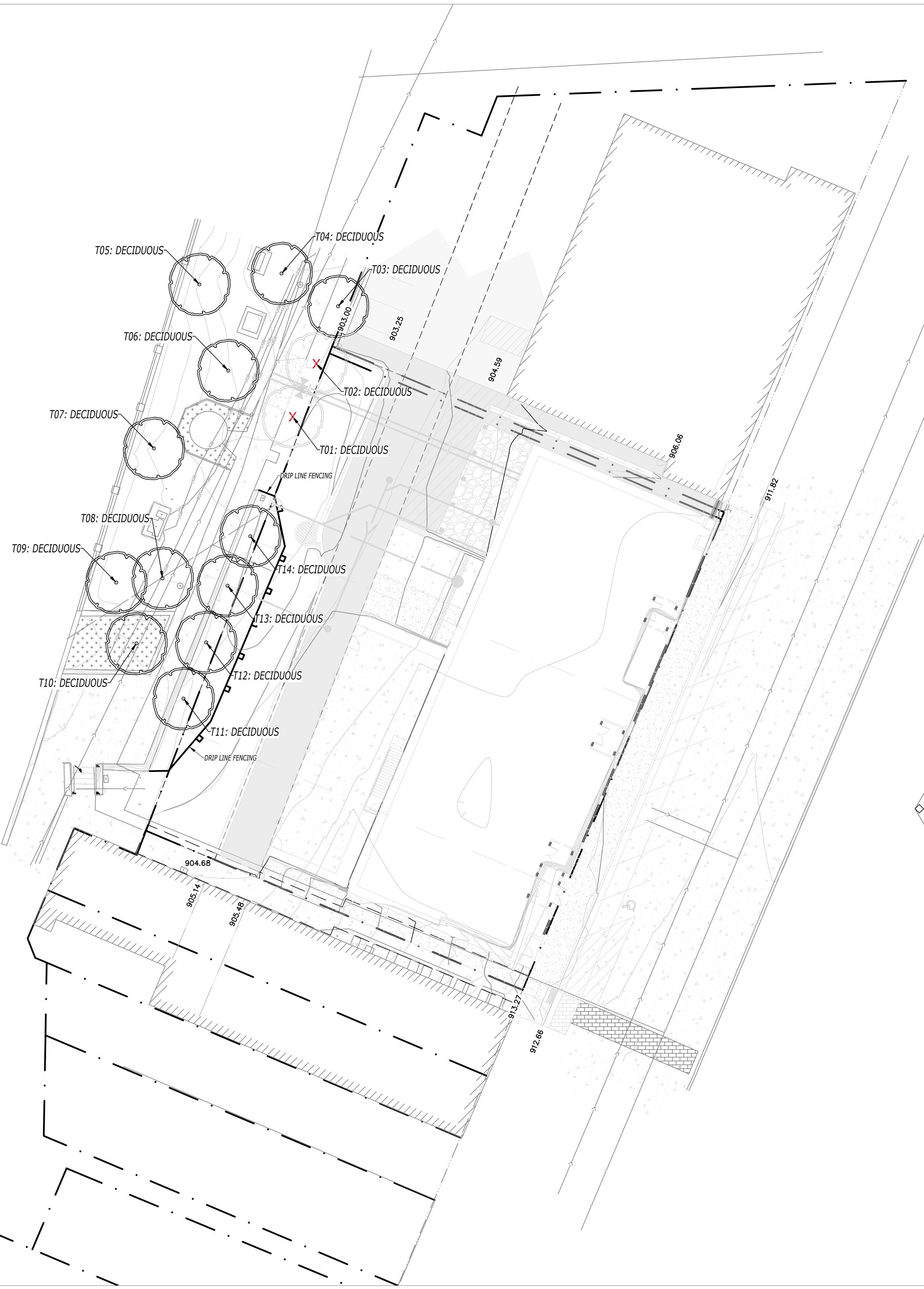
**TREE
 REMOVAL
 PLAN**

SHEET NUMBER

L103

EXISTING TREE LEGEND

ID#	SPECIES	STATUS
T01	DECIDUOUS TREE	REMOVE
T02	DECIDUOUS TREE	REMOVE
T03	DECIDUOUS TREE	REMAIN
T04	DECIDUOUS TREE	REMAIN
T05	DECIDUOUS TREE	REMAIN
T06	DECIDUOUS TREE	REMAIN
T07	DECIDUOUS TREE	REMAIN
T08	DECIDUOUS TREE	REMAIN
T09	DECIDUOUS TREE	REMAIN
T10	DECIDUOUS TREE	REMAIN
T11	DECIDUOUS TREE	REMAIN
T12	DECIDUOUS TREE	REMAIN
T13	DECIDUOUS TREE	REMAIN
T14	DECIDUOUS TREE	REMAIN



- NOTES:**
- FENCE SHALL BE INSTALLED ACCORDING TO PLANS BEFORE ANY WORK BEGINS ON SITE.
 - FENCE MAY BE RELOCATED WITH APPROVAL FROM THE LANDSCAPE ARCHITECT OR ENGINEER.
 - ALL FENCE SHALL BE MAINTAINED FOR THE DURATION OF WORK ON SITE.
 - CONTRACTOR SHALL NOT PARK VEHICLES, EQUIPMENT OR OTHER TEMPORARY FACILITIES IN TREE PROTECTION ZONES.
 - CONTRACTOR SHALL NOT STORE MATERIALS, SUPPLIES OR STOCKPILES IN TREE PROTECTION ZONES.
 - ANY EXPOSED ROOTS FROM GRADING PROCESS SHALL BE CLEANLY CUT.

