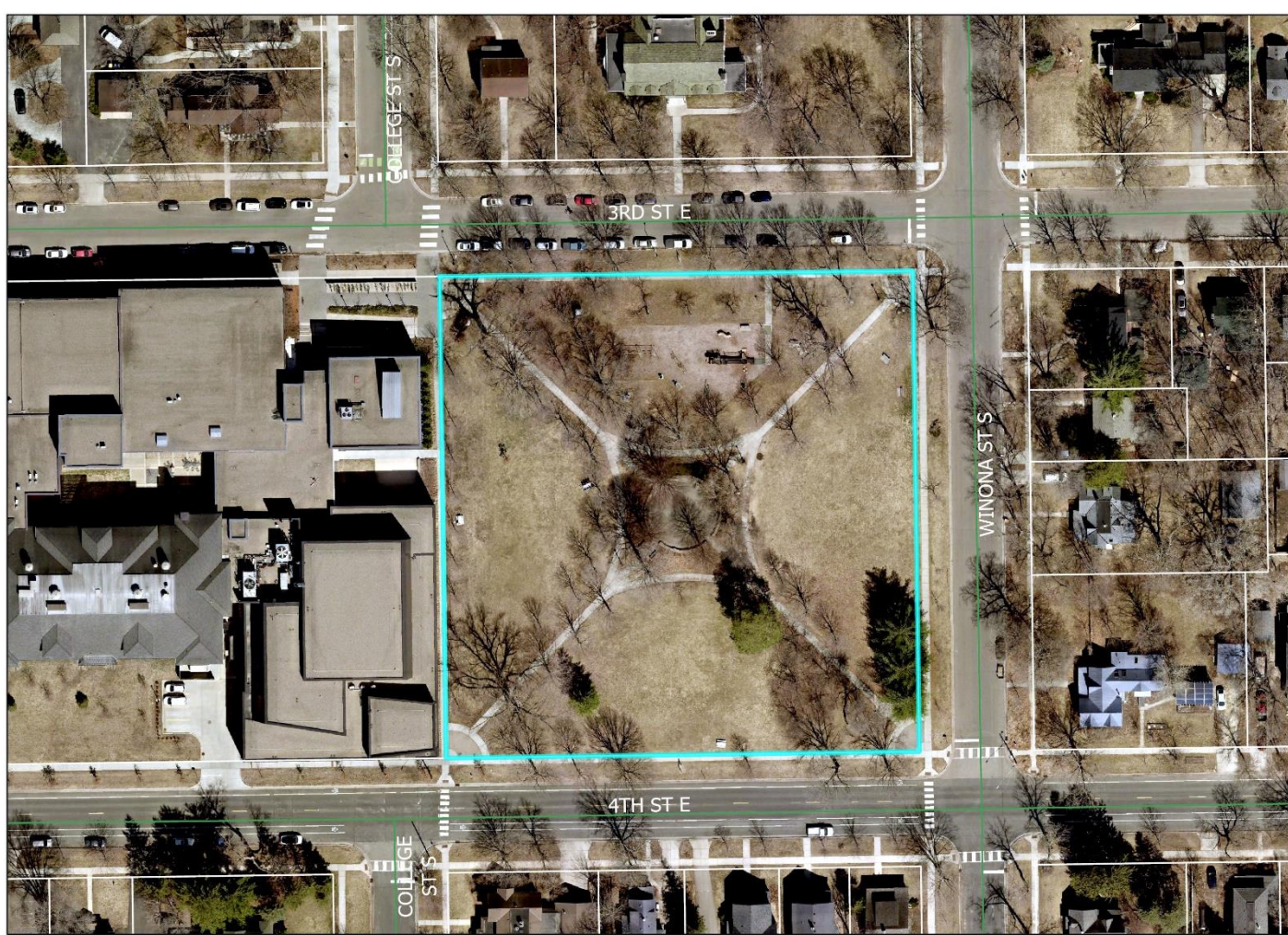




Central Park

Recommendation to Designate as a Local
Heritage Preservation Site

"...certain places... are of significance in American history, architecture, archeology, engineering, landscaping, and culture and those locations should be subject to additional review as it relates the this LDC."



0 0.01 0.01 0.03 Miles



Timeline & Process



HPC Votes to apply
for Local Designation
for Central Park –
November 2024

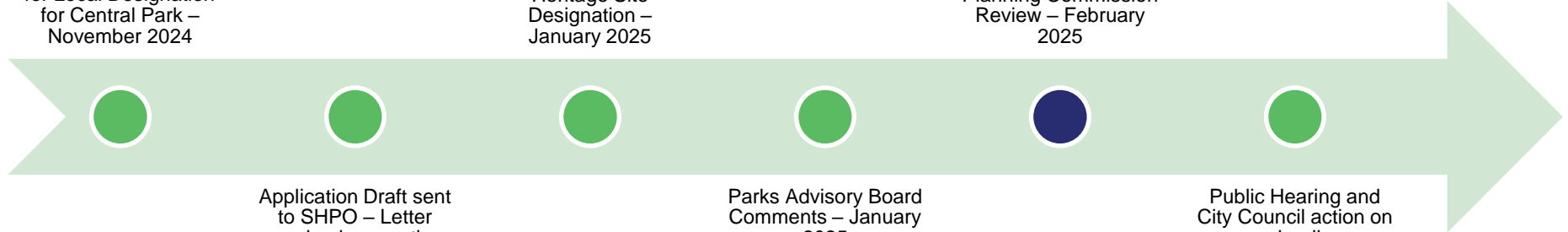
HPC
Recommendation of
Heritage Site
Designation –
January 2025

Planning Commission
Review – February
2025

Application Draft sent
to SHPO – Letter
received supporting
application –
December 2024

Parks Advisory Board
Comments – January
2025

Public Hearing and
City Council action on
proposed ordinance –
March 2025



SHPO Review

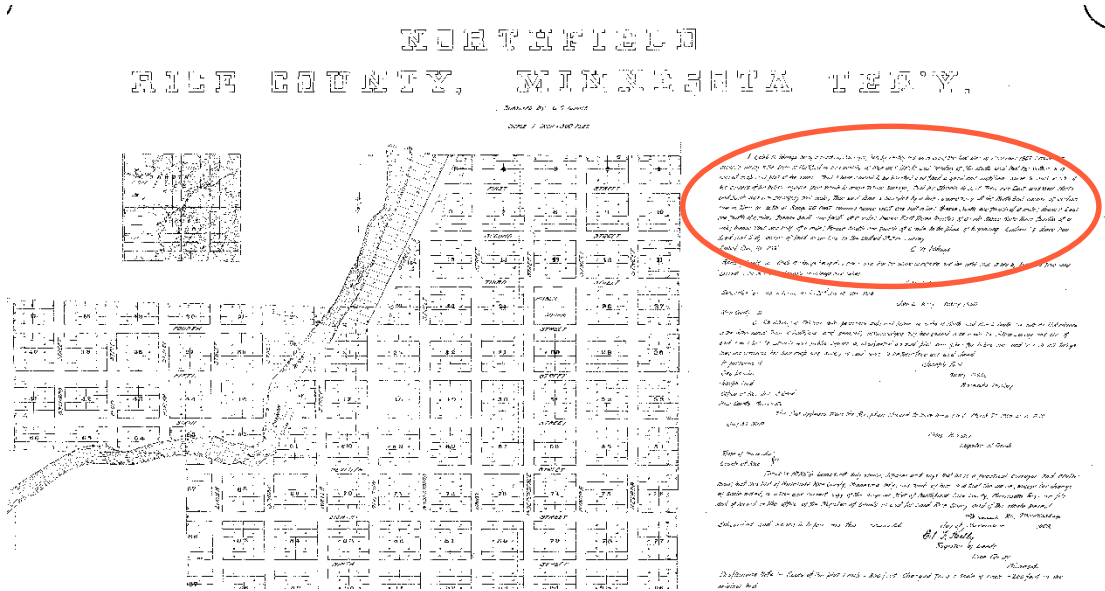


- State Statute requires that local designations be reviewed by State Historic Preservation Office (SHPO)
 - “Original and early character-defining features of the park include a row of trees on the outer edge of each of the four sides, two diagonal crosswalks, and a circular plaza in the center...”
 - “...Central Park is an ideal candidate for local designation.”

Historical Highlights

Caleb Iddings - Surveyor

Original Plat



- "...I have caused to be planted and fixed a good and sufficient stone to mark each of the corners of the public square from which to make future surveys..."

Character-Defining Features



- Rows of trees along perimeter
- Two diagonal crosswalks meeting in center
- Central circular plaza and seat wall



Historical Highlights



Rows of Trees - Circa 1869



Looking west on 4th - 1910



Historical Highlights



**Circular fountain - circa
1915**



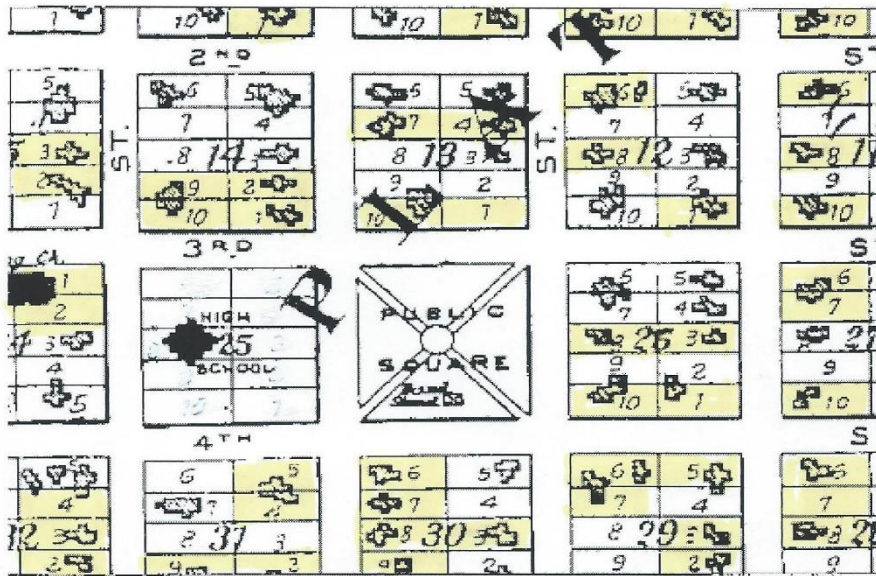
**Circular wall and plaza -
circa 2017**



Historical Highlights



Diagonal walks- Circa 1900
map



Current aerial



Historical Highlights



Headly vs. City of Northfield 1948-49

- The city sought to turn the park over to the school district for use as athletic fields.
- MN Supreme Court blocks move
- Dedication as a public square was incompatible with the proposed athletic facilities for the school.

2nd Lawsuit - 1949-50

- City attempts to condemn the park to take possession
- District court the blocks the attempt



View to North from 4th St. E

Google Streetview 2023



View to South from 3rd St. E

Google Streetview 2023



View to Southwest from Winona St.

Google Streetview 2023

HPC Findings



- (1) That the quality of significance in American history, architecture, archeology, engineering, and culture is present in districts, sites, buildings, structures, landscaping, and objects that possess integrity of location, design, setting, materials, workmanship, feeling, and association; or
 - Central Park possesses integrity of design, setting, feeling, and association, and is significant to local culture as a characteristic feature of Northfield from the time of its founding and the earliest neighborhood.

HPC Findings



- (2) That are associated with events that have made a significant contribution to the broad patterns of our history; or
 - Central Park has made a significant contribution to the broad patterns of Northfield's history. The site was included in the original 1855 town plat and designated as a Public Square for purposes of free passage or of ornamentation and improvement as grounds of pleasure, amusement, recreation, or health. The original surveyor, Caleb W. Iddings, also placed a stone at each corner of the Public Square to make future measurements from, and to establish the original street grid. The status of the park has been central to several court cases, including a Minnesota Supreme Court case that reaffirmed the status of the park as held in trust by the City and aided in preserving its historic

HPC Findings



- (3) That are associated with the lives of persons significant in our past; or
 - The park was included in the original plat of the city as established by John North, at the founding of Northfield. In addition to founding Northfield, Mr. North was involved in the framing of the state of Minnesota's constitution and the founding of the University of Minnesota.

HPC Findings



- (4) That embody the distinctive characteristics of a type, period, or method of construction, or that represent the work of a master, or that possess high artistic values, or that represent a significant and distinguishable entity whose components may lack individual distinction; or
 - Not Applicable
- (5) That have yielded, or may be likely to yield, information important in prehistory or history; or
 - Not Applicable

HPC Findings



- (6) That have a unique location or singular physical characteristics representing established and familiar aspects of a view, vista, site, area or district in the city; and
 - Central Park's location is unique and exclusive to the public square established in the original plat and has continued in that use, uninterrupted, through to the present day. It is surrounded by some of the earliest houses built in Northfield, and located two blocks east of the historic business district. The park retains many of its character-defining features including two diagonal walks that cross in the center of the park, a central, circular area at the center, rows of shade trees along the streets, and the park-like landscaping of mowed turf combined with ornamental plantings, and shade trees. The park predates

Comp Plan



- Parks & Recreation Objective 2 – Provide residents with parks and natural areas for recreational uses, protection of the natural environment, and visual/physical buffering of land development as a means to maintain the sense of place, ambiance, appearance, and history of the community.

Parks and Trail System Plan



- “The park has a formal character... reminiscent of old town squares... site amenities lack an overall sense of cohesive design character...”
- “The park site remains a viable and important neighborhood park for this area of the city. It should be enhanced over time with amenities... Possibilities... include adding a basketball court, small picnic shelter, and lawn games area. The interrelationship between the park and the adjoining Carleton College property should also be considered as part of any improvement planning for the park.”

Dedication



- “The ordinary and usual signification of a public square dedicated by a private person, as here, for public use is an open tract of land for use for purposes of free passage or of ornamentation and improvement as grounds of pleasure, amusement, recreation or health.”



3RD ST E

WINONA ST S

4TH ST E

Questions?

Recommendation
from Planning
Commission