

Meadows Park Master Plan Discussion



CITY COUNCIL WORK SESSION
OCTOBER 28, 2014

Goals



- Provide policy level direction to overall park development **process** and **timeline**
- Provide policy level direction to staff and advisory board as to what this park is **visioned** to become.

Agenda



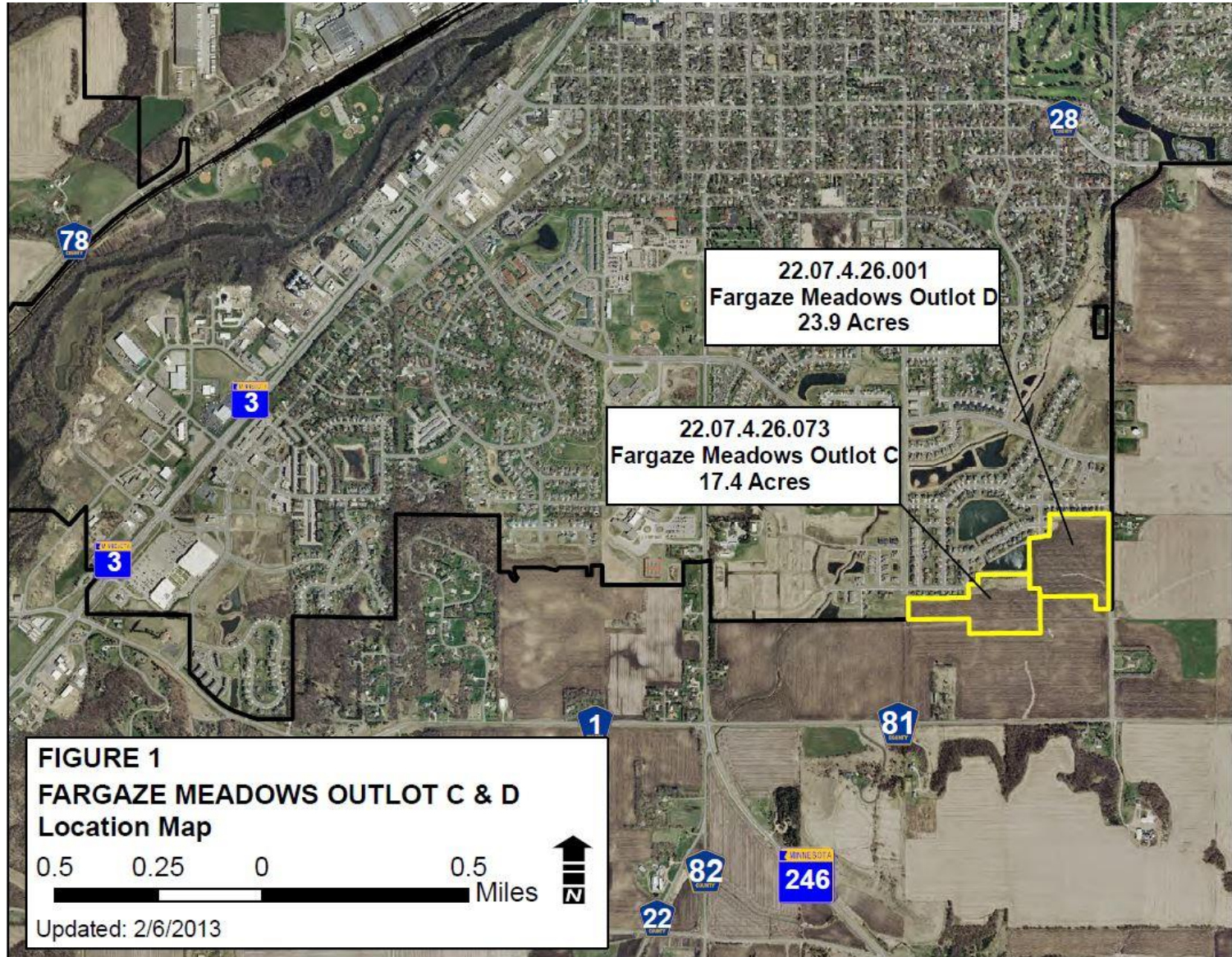
- Project Introduction
- Project Guidance
- Overview of Community Context
- Existing Site Conditions
- Programming
- Council Expectations
- Schedule
- Q & A

Project Introduction



- **Meadows Park**
 - Two parcels, approximately 41 acres
 - Acquired via tax forfeiture on July 1, 2013 from the state
 - ✦ For public use – ‘Park’
 - ✦ Cost was assessments/filing fees
 - Park and Recreation Advisory Board designated as the lead in the planning process
 - Master plan consultant retained – SRF/Paul Miller Design, Inc.

Location Map



Project Guidance



- **Guided by:**
 - Comprehensive Plan
 - Parks, Open Space and Trail System Plan
 - Comprehensive Transportation Plan Update
 - Northfield Area Greenway System Action Plan

MEADOWS PARK MASTER PLAN

NORTHFIELD PARKS, OPEN SPACE, AND TRAIL SYSTEM PLAN

Trail Classifications

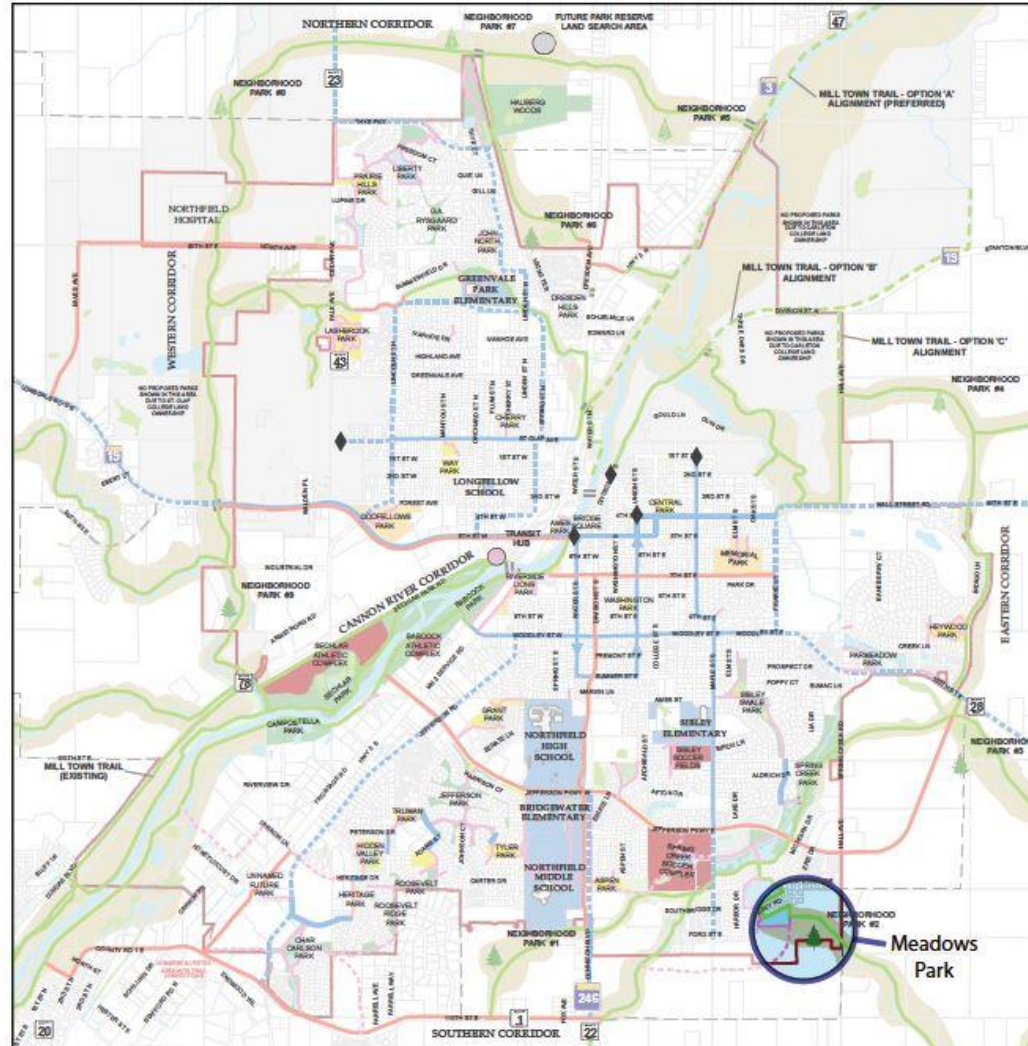
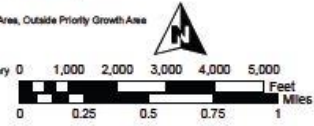
- ◆ Trail Classification
- Destination Trail - Core
- Linking Trail - Core
- On-Street Bike Lane
- On-Street Bike Lane (One direction only)
- On-Street Bike Route
- Local/Neighborhood Trail
- Local/Neighborhood Trail (proposed connection)
- Grade-Separated Crossing
- Bridge

Park Classifications

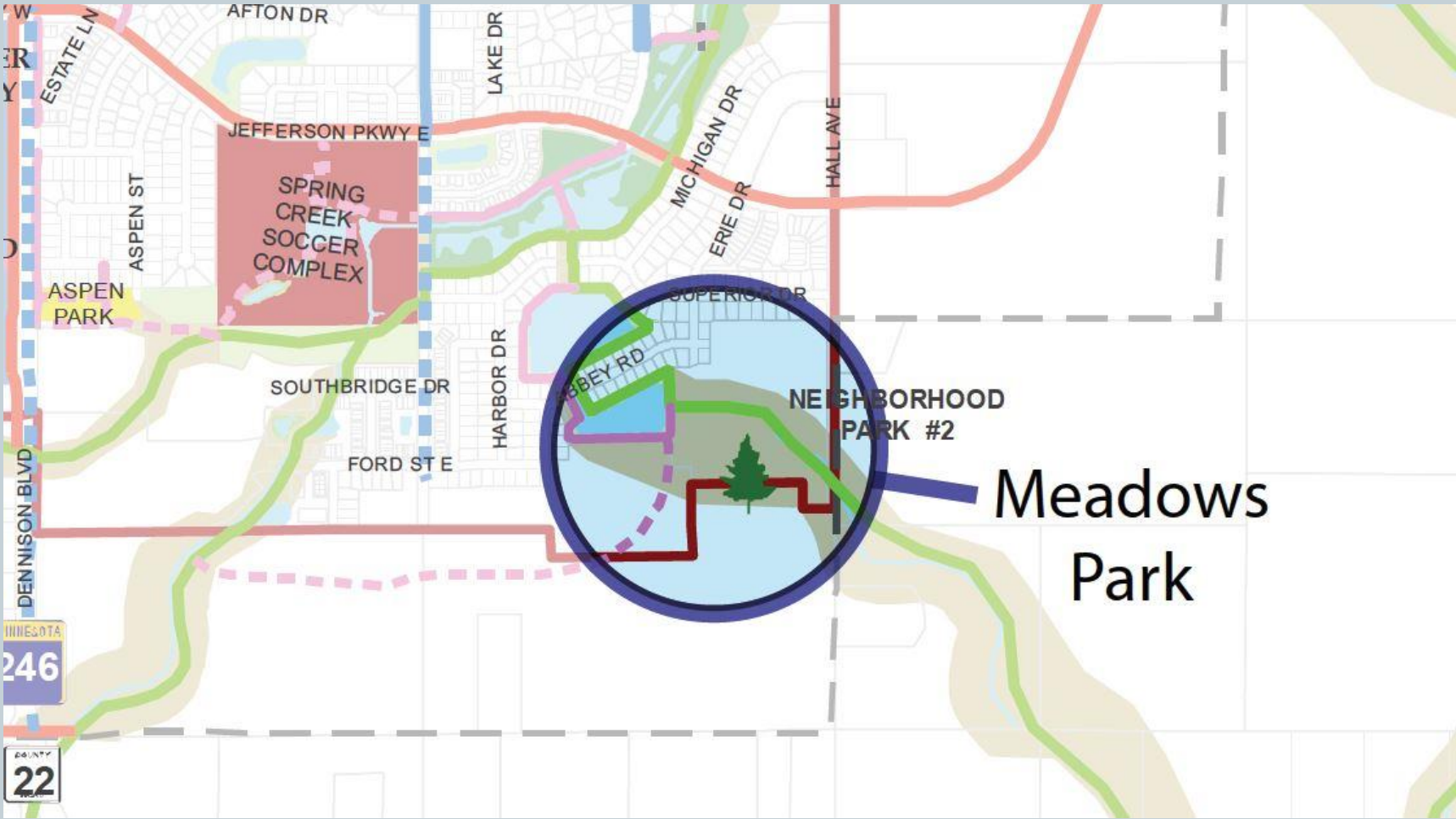
- Neighborhood Park
- Community Park
- Athletic Complex
- Greenway/Conservation Area/Public Open Space
- Open Space
- Natural Greenway Corridor
- School Site
- Pond
- Wetland

Future Park Development

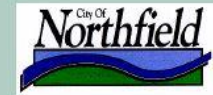
- Future Park Reserve Land Search Area
- Future Neighborhood Park Search Area, Inside Priority Growth Area
- Future Neighborhood Park Search Area, Outside Priority Growth Area
- Trail Hub
- Northfield - 2008 Corporate Boundary
- Priority Growth Area



Parks, Open Space and Trail System Plan



Transportation Plan



TRANSPORTATION PLAN

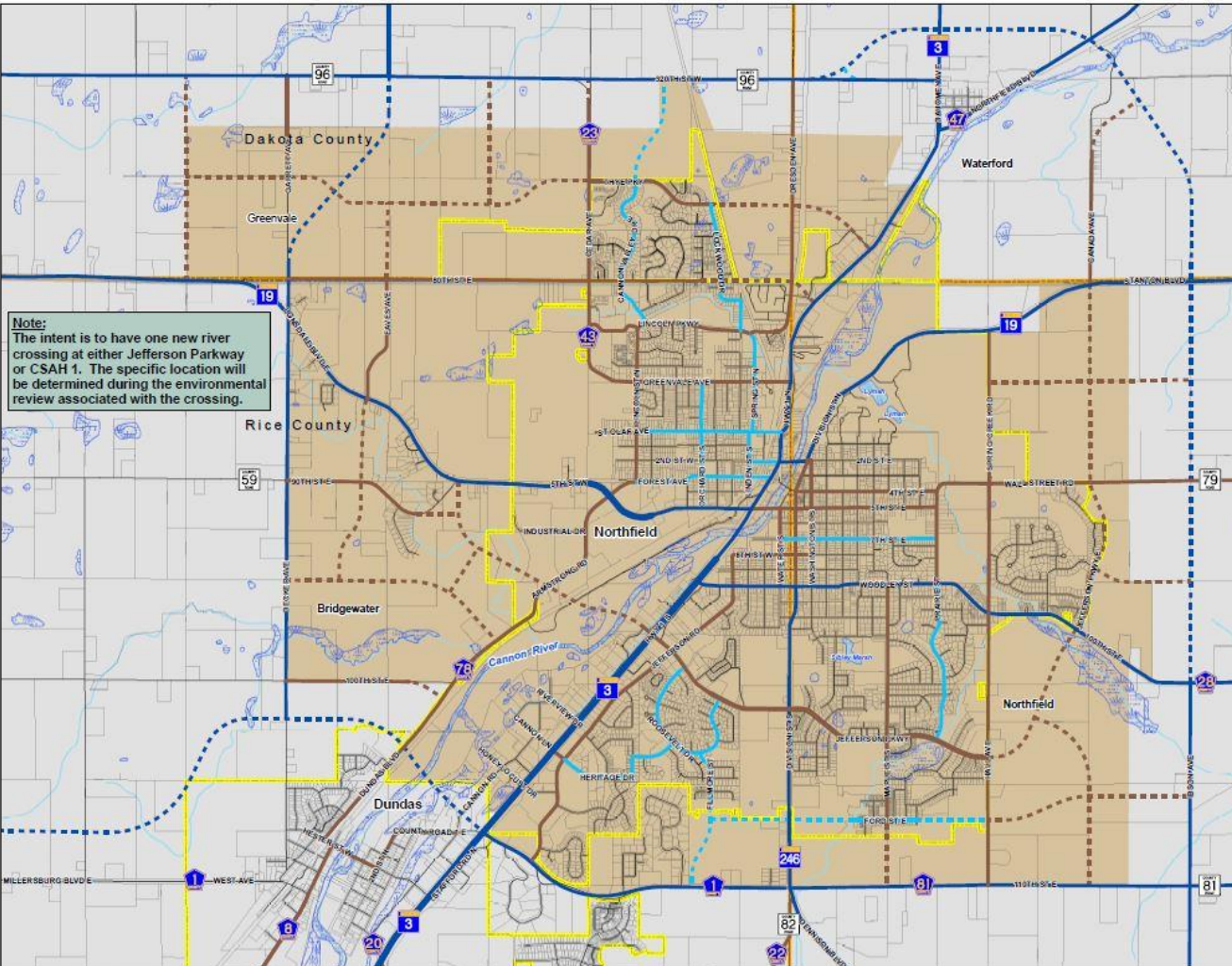
Legend

Functional Classification

- Minor Arterial
- - - Proposed Minor Arterial
- Major Collector
- - - Proposed Major Collector
- Minor Collector
- - - Proposed Minor Collector
- Urban Expansion Area
- Wetlands
- Lakes
- Roads
- Parcels
- City Limits
- Township Boundaries
- County Boundary

Note:
Please refer to Comprehensive Plan for Urban Expansion Area land use designations

Source: Rice County, Dakota County, MnDNR, ACP Visioning & Planning, Ltd.



Note:
The intent is to have one new river crossing at either Jefferson Parkway or CSAH 1. The specific location will be determined during the environmental review associated with the crossing.

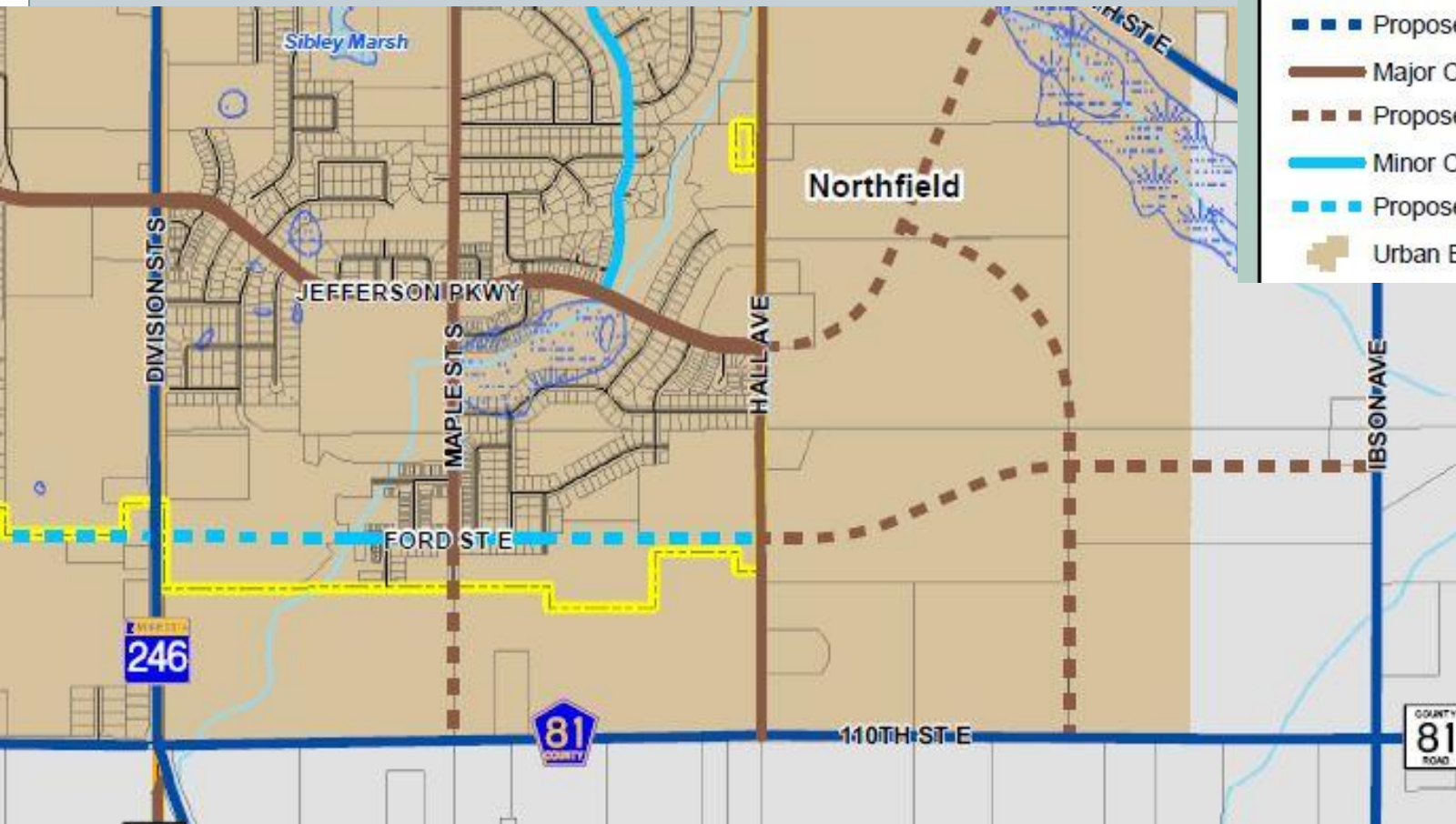
Transportation Plan



Legend

Functional Classification

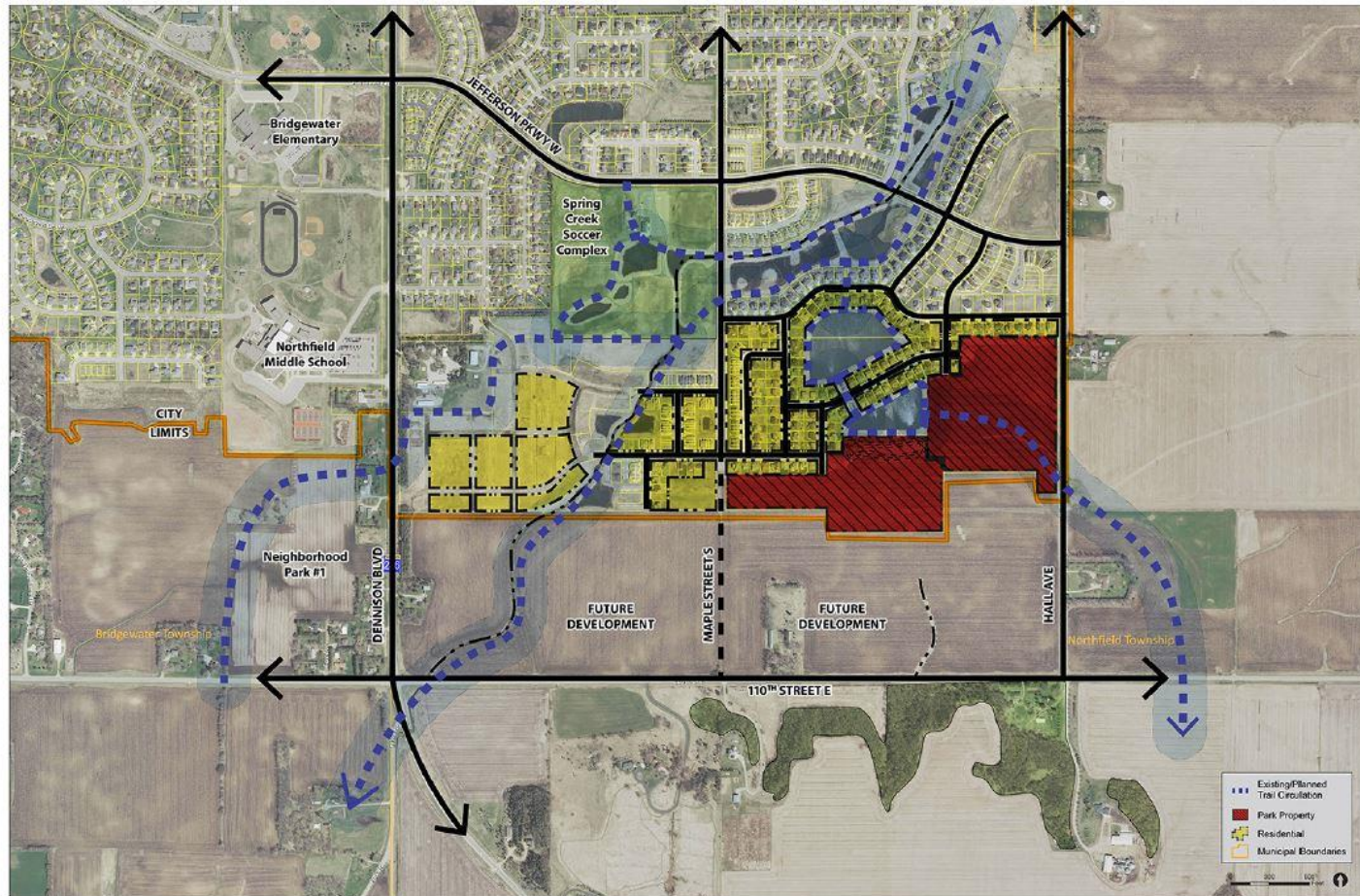
- Minor Arterial
- Proposed Minor Arterial
- Major Collector
- Proposed Major Collector
- Minor Collector
- Proposed Minor Collector
- Urban Expansion Area



Community Context

MEADOWS PARK MASTER PLAN

site context



Existing Local Parks

MEADOWS PARK MASTER PLAN

existing local parks



DOWNTOWN RIVERFRONT



CENTRAL PARK



DOWNTOWN RIVERFRONT



LASHBROOK PARK



PROJECT:



HAUBERG WOODS



CARLETON ARBORETUM



Existing Conditions

MEADOWS PARK MASTER PLAN

existing conditions



VIEW TO THE EAST FROM THE EXISTING TRAIL



PANORAMIC VIEW LOOKING WEST AND NORTH FROM THE EXISTING HIGH POINT IN SOUTHEAST



PANORAMIC VIEW FROM THE DRAINAGE SWALE LOOKING WEST



PROJECT:

Existing Topography

MEADOWS PARK MASTER PLAN

existing topography



Site Features

MEADOWS PARK MASTER PLAN

site features



Programming Considerations

MEADOWS PARK MASTER PLAN

thematic park programming considerations



RESTROOM/COMMUNITY BUILDING



PICNIC SHELTER



PERFORMANCE EVENT/VENUE



MULTI-PURPOSE OPEN LAWN AREAS



NATURAL RESOURCE RESTORATION



BOARDWALKS



COMMUNITY GARDENS



INTERPRETATION/EDUCATION



SOFT SURFACE TRAIL SYSTEMS

Programming Considerations

MEADOWS PARK MASTER PLAN

thematic park programming considerations



ATHLETIC FIELDS



FRISBEE/FOOT GOLF



DESTINATION PLAYGROUND



PAVED TRAIL SYSTEMS



MOUNTAIN/BMX BIKING



COURT GAMES



SLEDDING



SKATING



CROSS COUNTRY SKIING/SNOWSHOE TRAILS

Schedule



- **Planning Review**
 - Kickoff meeting with Staff
 - Gather Site Background
 - Establish Vision and Goals
 - Prepare Base Map
 - Site Issue Plans
- **Community/B&C Input**
 - Meet with City Council
 - Meet with partner groups
 - Community meeting
 - Meet with PRAB
 - Meet with PRAB
 - Community meeting

SEP – OCT 2014

Complete

In progress

In progress

In progress

In progress

OCT '14 – JAN '15

OCT 28, 2014

NOV '14 – JAN '15

NOV 19, 2014

NOV 20, 2014

JAN 15, 2015

JAN 21, 2015

Schedule



- **Park Master Plan**

- Establish design parameters NOV 6 – DEC 5, 2014
- Develop alternative concepts NOV 6 – DEC 31, 2014
- Board Review JAN 2015
- Review with City Council JAN 2015
- Refine alternative to preferred plan FEB 2015
- Prepare preliminary cost estimate FEB 2 – APR 3, 2015
- Prepare maintenance plan FEB 2 – APR 3, 2015
- Meet with Planning Commission MAR 2015
- Present final master plan APR 14, 2015

- **Budget Formation**

- Prepare General Parks budget (FY16) MAY 2015
- CIP Update MAY 2015
- Present to City Council JUN 2015
- Financing approved by Council JUL 2015

Schedule



- **Project Implementation**

- Prepare RFP for design MAY 2015
- Advertise RFP JUN 2015
- Award design services AUG 2015
- Construction design AUG – NOV 2015
- Review preliminary design/cost with Council & PRAB SEP 2015
- Final design/cost to Council & PRAB NOV 2015
- Council approval and advertise for construction DEC '15 – JAN '16
- Open bids JAN 2016
- Award construction contract MAR 2016
- Construction start MAY 2016
- Construction completion JUL 2016

Questions and Answers

